



KIRKLEES TOP 100

COMPANIES 2022/23

YOUR EXCITING CAREER STARTS HERE

CAREERS EDITION

PROUD SPONSOR



CityFibre

WE'RE BUILDING A BRAND NEW, ULTRAFAST BROADBAND NETWORK IN KIRKLEES

Built from scratch, with the latest full fibre technology, this is a digital network like no other. Giving communities and businesses in Kirklees the fastest most reliable broadband for generations to come.



For updates on the build and when we're heading to your street, visit:
cityfibre.com/yourstreet

INSIDE



C & K Careers.....	5
Top 10.....	6
Public Sector Organisation.....	11
Significant Employers...	12
Significant Employers...	14
Innovation Index.....	16
Top 100.....	18

Please note: inclusion in the Kirklees Top 100 Companies list is based on objective criteria using accounts published in the FAME database prior to July 2022 and does not imply endorsement from the partner organisations.

Welcome to the Kirklees Top 100 Companies, Careers Edition

This brochure features a variety of local employers, showcasing Kirklees as a fantastic place to start and develop your career.

Each year we like to ensure that the Top 100 is seen by as many people as possible, with one of our priority groups being you, our young people. This brochure aims to help you consider what local opportunities are available right on your doorstep!

It's no secret that the recent pandemic and rising costs have made life more challenging, this has meant businesses have had to adapt quickly and change the way they work. Our evolving economy brings with it the need for flexibility, innovation and alternative job roles. The Top 100 Companies list celebrates some of the businesses showing incredible resilience, despite the shifting demands of today's economy. This year, we invited local careers company, C+K Careers, to tell us more about the types of roles they predict will be in demand in the future.

'Kirklees; a fantastic place to start your career'

With around 14,500 businesses in sectors such as manufacturing and engineering, textiles, pharmaceuticals, creative and digital industries, to name only a few, Kirklees is a fantastic place to start and grow your career. As the largest concentration of high value manufacturing in the UK, Kirklees has an excellent reputation for technical and scientific capabilities in metrology, textiles, and the digitalisation of manufacturing. We also have leading developments in cyber security, gaming, and software design. Our high achieving colleges are incredibly valuable assets, whilst the University of Huddersfield's new Health Innovation Campus is set to become a national centre for the training of NHS nurses, midwives and other health professionals. Add to this our renowned Textile Centre of

Excellence and 3M Buckley Innovation Centre, and there is a lot to shout about and be proud of. Kirklees' location and connectivity allows easy access to the North's major cities and airports, making it conveniently placed and accessible. The £250 million Huddersfield and Dewsbury Blueprint projects are now underway, aiming to create thriving modern town centres that are not only accessible, but also inclusive, sustainable, and safe, providing yet more options for both business and leisure within the district.

'Kirklees; a place looking to the future.'

Despite a difficult few years, we are encouraged that so many businesses continue to call Kirklees their 'home'. With millions of pounds being invested in transport upgrades, town centre regeneration and lightning-fast broadband, we're a district preparing for tomorrow.

Increased funding for training, upskilling, and particularly growing the numbers of Apprenticeships, has meant that businesses really are catering for those looking to jump straight into the workplace. Our Top 100 Companies list contains small businesses but also international operations, household brand names, with long standing heritage and a culture of developing and growing their workforce. Through apprenticeship opportunities, graduate placements, and ongoing training you can start building your career and developing your skillset to help reach your full potential. We'd like to thank our sponsor, City Fibre, for their generous contribution to the cost of producing the Kirklees Top 100 Careers Edition.

We hope that the companies included in this brochure will capture the imagination and help you to consider a bright future, both living and working here in the heart of Kirklees.



Professor Bob Cryan CBE DL CMgr CCMi FREng, Vice-Chancellor & Chief Executive, University of Huddersfield



Cllr Shabir Pandor, Leader, Kirklees Council



Sue Cooke, Chief Executive, 3M Buckley Innovation Centre



Wayne Ankers, Editor, Huddersfield Examiner

C+K

ck.mydirections.co.uk

+MY
DIRECTIONS
.CO.UK

MyDirections

MyDirections is a 24/7 personal careers platform. It has been designed to help young people plan their future by exploring multiple career options, stimulating discussions and ultimately making good informed choices that are the best for them.

Want to know more?



Scan the code

Did you know we also have an Adult Careers Service?

We offer an all-age adult guidance service and our Adult Team can help with careers guidance and decision making support, to practical advice with CVs, job applications and interview prep.

Contact them to find out more on **01484 242000**, email **enquiries@ckcareers.org.uk** or visit **<https://www.ckcareers.co.uk/services-for-adults>**

MyDirections.co.uk

✉ chat@ckcareers.org.uk 📞 01484 213856

Follow us @CKCareers



Local careers company C+K Careers talks about how young people can prepare themselves for the local labour market

Delivering a high-quality careers service for over 25 years, C+K are experienced in advising young people and adults about their future careers. During the Covid-19 pandemic they had to adapt their services to meet the needs of their clients. Now that things are getting back to normal, they have embraced new ways of working and are aware of the challenges of the ever-changing labour market. We asked for their experience of the local labour market and how this has impacted on the work they do.

Labour Market Information (LMI) is information about what is happening in the world of work and includes:

- information about which jobs are likely to be in demand and prevalent in an area
- information about which jobs are declining
- which skills employers are looking for and which are in short supply?
- salary information - highly skilled people are more likely to earn more money.

Why is LMI important?

Looking at LMI means that our clients can plan their future and choose options that provide them with the skills and knowledge that employers might be looking for in the future. Having access to the information supplied by the Kirklees Top 100 companies helps us to understand the local LMI. It also helps local education and training providers to plan and develop courses that meet the demands of the local economy and the requirements of the people who want to complete qualifications or training. Research is key before making decisions about future options and careers, so being able to supply this information helps our clients to make informed decisions.

LMI in Kirklees

As in many areas retail, education and healthcare are important employment sectors in Kirklees, this is because most areas have schools, colleges, shops, and hospitals. However, manufacturing is another important sector in

Kirklees. Manufacturing is about making things on a large scale; this can be anything from raw materials to high end textiles.

As well as statistics showing this, around half of the Kirklees the Top 100 businesses are manufacturing companies. 15.8% of employed people in Kirklees work in manufacturing - this is almost double the figure for Great Britain (7.9%). Manufacturing has also been identified as a priority sector in the local skills report for West Yorkshire.

What types of employment are growing?

Employment rates have remained stable in Kirklees across most industries between 2018 and 2020 (latest information available). There have been increases in people working in some manufacturing sectors, construction, veterinary activities, administration, rental and leasing activities and legal and accounting services*.

- The following sectors have been identified as priority for action where there may be an increase in jobs for the future** along with identified growth in Infrastructure and Digital skills:
- Engineering and manufacturing sectors
- Health care sector
- Construction sector
- Energy sector
- Green sector

There is an ever-increasing awareness about the climate throughout the World - this means that countries, including the UK, will need more people to research into and develop green technologies. This is called the Green sector.

A new Green Jobs Taskforce has been created and will oversee the development of the 'Mayoral Green Jobs Gateway', which will create 1,000 well paid, skilled, green jobs for young people and ensure that West Yorkshire has the pipeline of talent needed to realise its ambitious target of becoming a net zero carbon economy by 2038 with significant progress by the end of the decade.

Employers are being encouraged to pledge their support to the Mayoral Green Jobs Gateway on the

Combined Authority's website. Knowing about these employment sectors is important so that young people can gain the relevant skills required for when they start work. As well as sector specific skills many sectors are looking for people with general skills or 'transferable' skills. These include things like numeracy, literacy, communication, digital skills, teamwork, and time management. Qualities such as flexibility and resilience are also important as it is essential to be able to adapt to an ever-changing environment.

How can the young people of Kirklees develop the skills required for the labour market?

When making career plans, C+K advisers encourage their clients to choose options that help them with their next steps, for example completing qualifications at sixth form or college. New qualifications such as T levels have been created to help young people develop the technical skills required for developing industries. Apprenticeships and traineeships develop employability skills that can lead to progression to higher apprenticeships, degree apprenticeships, promotions in the workplace etc. People can also develop skills in other ways, for example through education, hobbies, and life experiences.

Useful websites

For careers help contact: chat@ckcareers.org.uk

Further information on local jobs and skills can also be found at MyDirections C+K's website for young people.

For more information on green careers: <https://www.futuregoals.co.uk/engage/educators-and-advisers/go-green/>

For more information and help with identifying skills: Skills assessment | National Careers Service

Sources:

*Business Register and Employment Survey 2020.
**local-skills-report-2022-final-pdf.pdf (westyorks-ca.gov.uk)
*** <https://www.futuregoals.co.uk/engage/educators-and-advisers/go-green/>

BUSINESS PROFILE

1. BUY IT DIRECT GROUP

This is an inspirational company that has undergone phenomenal growth in just 23 years with its profits recently almost quadrupling in just one year.

Buy It Direct, which employs more than 1,250 people and has 2 million sq ft of warehouse space, posted profits of £26.5m in 2021 compared to just over £7m in 2020. Turnover had gone up to almost £437m compared to almost £295m in 2020. Yet it all began with a £2,000 loan and founder Nick Glynn's desire to set up his own business in 1999. The business has grown from a computer shop to one of the biggest names on the internet because Nick has always had the vision to fully embrace the immense selling power of online retailing. Anyone browsing for everything from laptops to fridges to showers to sofas to hot tubs will be familiar with Buy It Direct based on Leeds Road in Huddersfield. Buy It Direct now incorporates several other brands including Appliances Direct, Laptops Direct,

Furniture 123, Better Bathrooms and Outdoor Living. The story started when Nick started Easy Computers in Fartown, Huddersfield, and within a couple of years it had become one of the first businesses to sell laptops



Buy It Direct managing director Nick Glynn

online by launching the website acernotebooks.co.uk. The business saw phenomenal growth and by 2004 laptopsdirect.co.uk was set up so the business could sell a far wider range of laptops. By 2006 two more brands were up and running - Direct TVs and Aircon Direct - and a year later the company moved into a new HQ in Huddersfield. In 2008 the new AppliancesDirect.

co.uk brand greatly expanded the product range with the company also moving into furniture with the acquisition of Furniture123 in 2012. Nick's quick to spot emerging markets so acquired drone dealer Proflight-UK in 2015 and rebranded it to Drones Direct. A 150,000 sq ft warehouse opened in Elland in 2017 soon followed by a new home delivery depot in Luton to serve the south of England. In 2019 Nick acquired the UK's largest bathroom retailer out of administration, Better Bathrooms, which has led to even further expansion. In 2021 the company acquired a lease on a gigantic 525,000 sq ft. distribution centre near Castle Donington in Leicestershire. Recycling is given a top priority - so much so that the company invested in a state-of-the-art recycling start-up called AREERA. The company uses robots to separate out the components of TVs and monitors so that everything can be recycled.

2. THORNTON & ROSS

BUSINESS PROFILE

This Huddersfield pharmaceutical company is 200 years old this year and makes some of the UK's biggest and most well-known brand names.

Thornton & Ross' impressive list of household trade names includes the UK's leading disinfectant Zoflora along with cough medicine Covonia, Cetaben cream for dry, sensitive or eczema-prone skin and Hedrin which gets rid of head lice. It also provides many prescription products such as moisturisers and innovative medicines aimed at the treatment and prevention of common bone disorders such as osteoporosis and Vitamin D deficiency, along with a wide range of generic and speciality products. The company's manufacturing base is on Manchester Road in Linthwaite, it now employs more than 700 people and earlier this year relocated its 150 office and commercial staff to the historic Globe Mill in Slaithwaite.

During the Covid-19 crisis Thornton & Ross donated more than 100,000 skincare moisturisers to frontline NHS staff to minimise the discomfort of irritated skin along with sore and cracked hands caused by prolonged use of face masks, frequent hand washing and increased hand sanitising. It also donated 14,000 bottles of Zoflora to NHS workers in Huddersfield. Other consumer products made by Thornton & Ross that you'll be familiar with include Eurax for itchy skin problems, Flixitol moisturising foot cream, cold sore cream Virasorb, children's cough mixture Tixylis, Savlon antiseptic cream, Radian B for muscular aches and pains, Mycota which treats athlete's foot, Acriflex antiseptic burns cream, Metanium which both prevents and soothes nappy rash and Eucryl tooth powder to polish your teeth. Children's healthcare is a large part of the business and its Care range has 80 products ranging from

olive oil eardrops through to gels to soothe chickenpox. Many are classic medicine cabinet essentials for minor ailments. People can buy its products direct online from the company through part of its website called Thornton & Ross Direct. Thornton & Ross was founded as a manufacturing chemist for pharmacists by Nathan Thornton and Phillip Ross in an old dye house on Colne Vale Road, Milnsbridge, on November 23, 1922. Thornton and Ross became part of the STADA group in 2013.



Thornton & Ross product Zoflora disinfectant

BUSINESS PROFILE

3. PPG ARCHITECTURAL COATINGS

The PPG plant in north Kirklees is Europe's largest paint manufacturing complex.

PPG, which makes paint brands Johnstone's and Leyland, is based at a 65-acre site in Birstall where it has been since 1983. It employs more than 1,500 people across the UK and Ireland. It's part of a global company manufacturing any kind of paint you can think of from car paint - two out of three cars made in Europe and North America use PPG paint technology - to industrial paint including coatings for drinks cans and paint for homes for the inside, outside, wood and metal. If anything can be painted, PPG has the product. Yet it didn't even start out as a paint company. It was founded in 1883 as Pittsburgh Plate Glass but retained the PPG moniker even though it diversified to become a paint manufacturer and supplier. It has 47,000 employees worldwide, operates in 70 countries, has 156 manufacturing centres and total yearly sales are around \$14 billion. PPG also has a very strong social conscience and one of its main

community schemes is its Colorful Communities programme which encourages its staff to volunteer their time and PPG products to brighten up their neighbourhoods. It was set up in 2015 to invest \$10m in 10 years and so far 386 projects have been completed in 42 countries, enhancing the lives of 7.4 million people. It has involved more than 18,000 employees and community volunteers providing over 120,000 volunteer hours. It has cost more than \$8.8m so far and used up almost 38,000 gallons of paint. Several projects have been completed by the Birstall staff including enhancing the Hollybank Trust residential home for people with profound disabilities in Mirfield, renovating playground equipment at Mirfield Memorial Recreation Garden and transforming a neglected courtyard at Fairfield School in Batley for pupils with complex needs into a peaceful sensory garden. Probably the biggest project saw 100 PPG volunteers transform Batley Railway Station. The shop and café, as well as the front of the building, were painted



PPG volunteers hard at work brightening up Birstall Community Centre.

by the volunteers while a mural depicting iconic venues in the town - including the famous Frontier club and Batley Bulldogs' Mount Pleasant ground - was created in the subway. Another project saw 38 PPG volunteers and nine community volunteers refurbish Birstall Community Centre, putting in a new commercial kitchen and bathroom, modernising the windows and ceiling and giving the walls plenty of vibrant colour. The colours there are especially suitable for people with visual impairments, the elderly and people suffering from dementia by painting walls, doors, frames and handrails in contrasting colours.

4. ISAAC TIMMINS LTD

BUSINESS PROFILE

We all know this company as the Myers Group but why is the parent company called Isaac Timmins Ltd?

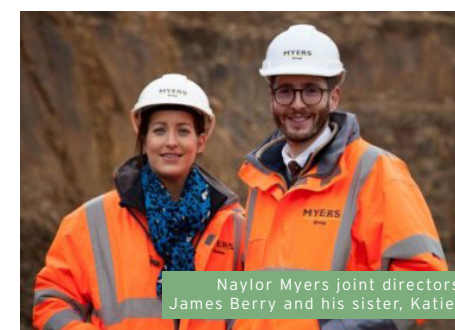
And what link does Myers have to some of Huddersfield's greatest landmarks? Well, it was originally founded as Isaac Timmins Ltd in 1929 when Hervey Myers bought housebuilding company Isaac Timmins and the Myers Group can trace its modern-day heritage back to 1959 when the

Readymix Huddersfield concrete business was incorporated. The Readymix operation has since expanded into a regional business with four strategically located manufacturing plants. Its concrete was used to build Emley Moor mast in 1969 and also the M62 motorway and the landmark Scammonden Dam bridge. Group companies also include Johnsons Wellfield quarries founded in 1854 and acquired by the Myers family in 1979. Johnsons Wellfield is Britain's leading supplier of natural hard Yorkstone and the only division in the group that sells nationwide. Its stone features on the imposing Creative Arts School at the University of Huddersfield. Myers Building Supplies is a builders' merchant with 15 branches throughout Yorkshire. There are also two Huddersfield focused specialist businesses - Myers Timber and Myers Skip Hire -



Naylor Myers' Huddersfield branch

and it also has a specialist kitchen department. The Myers Group is now into its fourth generation run by co-directors, brother and sister James and Katie Berry, and employs 350 people across West Yorkshire. It invested more than £1m into its Huddersfield headquarters on Barr Street at Bradley Mills in 2020 and other branches have recently been renovated including Denby Dale and Penistone. Myers supports several charities including Kirkwood Hospice and the Yorkshire Air Ambulance.



Naylor Myers joint directors James Berry and his sister, Katie.

BUSINESS PROFILE

5. PCSPECIALIST LTD

Just 19 years ago a Huddersfield A-level student started this business in his back bedroom - and in 2021 its profits were £3.6m, almost double the 2020 figure.

The company only operates online and specialises in top quality computers for businesses and gaming enthusiasts and is now delivering a computer somewhere in Europe every 5 minutes - that's more than 100,000 a year. It was started in 2003 by Danny Williams at his home in Lepton and he now modestly describes himself as Tea Room Manager at his hugely successful business based at Grange Moor which employs well over 200 people. Danny was 17 at the time he began his business, studying at Greenhead College and was due to go to the University of Leeds to study a business degree but realised his own idea may be a goer when he built and sold four computers a week so carried on with it instead. Apart from selling direct, the

company's products are also sold through huge names such as Currys PC World and Very. Danny, a former King James' School pupil, said: "I grew up in Lepton and my bedroom floor was covered in computer bits - so much so my bed was tipped on its end most of the time - and the spare bedroom was my stockroom." He moved to tiny business premises in Shepley and took on five staff but over the years the business has kept growing and growing - never more so than during the pandemic - and is now in two units covering around 50,000 sq ft. Danny, 37, said: "It's been an absolute whirlwind. We were doing OK but the pandemic has totally changed people's working patterns and with people also stuck at home during the lockdowns it all meant there was a huge demand for the kind of computers we can



Danny Williams,
Founder and Director
at PCSpecialist Ltd

provide. Everything we do is built at Grange Moor and then sent out to customers in the UK and across Europe."

The company is now Europe's leading provider of built-to-order PCs, laptops, all-in-one streamlined desktop computers and servers. There are 14 versions of the PCSpecialist website in European languages and staff at Grange Moor can talk to people in 10 languages as they supply computers to more than 30 countries

across Europe. PCSpecialist is very environmentally-friendly. It has invested in a 235.5KWp solar panel installation to help generate around 187,900KW per year - that's enough to power 57 homes. The business has also invested in the latest recycling equipment so can recycle more than 95% of its cardboard, soft plastics, hard plastics, metals, wood, strapping and polystyrene.

6. TANDEM 1987 LTD

Better known as Principle, this global branding agency based in Huddersfield has some of the world's most iconic clients and employs more than 700 people worldwide.

The company's group name is Tandem 1987 Ltd and the reason is it was founded by its group chairman Richard Butterfield in 1987 on the Tandem Industrial Estate at Waterloo in Huddersfield where it still has its head office. It now also has offices worldwide including Europe, the USA, Australia, Japan, Korea, China, India and Russia. The business has worked with some of the biggest brand names in the world including BMW, Rolls Royce, Bentley, Tesla, Ferrari, Jaguar Land Rover, Amazon, Harrods, Estée Lauder, John Lewis, Waitrose, HSBC, Barclays, Lloyds Banking Group, Specsavers, Sky, Wembley Stadium, Virgin Atlantic, Arsenal Football Club, Hard Rock Café and EAT. But even though Principle has an



Principle founder
Richard Butterfield

amazing roster of clients, its values remain very much down to earth. Richard said: "While we've become a big company we don't act like one and never will. We're very hands on at all levels and very proactive. I like to describe us as more like a speed boat than an oil tanker. We respond quickly to our clients and the market. I think we've achieved much of our success by

looking after our people and our clients and because we love what we do and care about doing a great job. We've never failed on a project, no matter what it takes."

One of its challenges was to get more people to see Jeep vehicles after the company felt not enough potential customers were going into its car showrooms.

So Principle came up with the idea of taking the car to the people by devising pop-up displays featuring a virtual experience off-road adventure in busy places with a lot of people going through them. These were quite close to Jeep dealerships so they didn't have

far to go to see more of the Jeep range.

Principle played a vital role helping BMW to launch its i-brand range of electric vehicles at 750 BMW retailers in 56 countries and also helped to rebrand the interior designs in Mini showrooms. It also brought together the Jaguar and Land Rover brands into a single retail experience that gave equal weighting to each iconic brand within a shared space and then rolled it out across 2,500 retailers worldwide. Principle is responsible for managing and implementing this corporate identity and brand worldwide. Principle provided all 10,000 signs for Wembley stadium, a feat the company describes as "the largest single site branding project ever undertaken in the UK."



The Jeep pop-up experience to drive more people into its showrooms

BUSINESS PROFILE

7. FINTEL PLC

Well-known Huddersfield financial services company SimplyBiz, run by Huddersfield Giants chairman Ken Davy, is part of Fintel, the UK's leading financial and support services business.

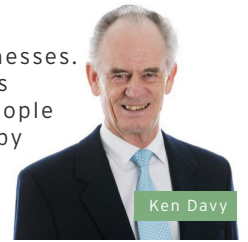
Fintel, based on St Andrews Road in Huddersfield, is also the parent company of the industry leading financial information, ratings and

fintech business, Defaqto. As part of Fintel, SimplyBiz is committed to simplifying and improving the complex world of financial services and provides high quality comprehensive compliance and business support to thousands of financial advisers throughout the UK. It has the experience, expertise and regulatory guidance that puts advisers firmly in control



Fintel headquarters based on St Andrews Road in Huddersfield

of their own businesses. SimplyBiz employs more than 500 people and was founded by its chairman, Ken Davy, in 2002. Ken, who is also company director at Fintel, is a hugely respected figure in both the financial services sector and the local community. In addition to the many awards SimplyBiz has received under Ken's leadership, he has personally been awarded several outstanding contribution to financial services and lifetime achievement awards, as well as an Honorary Doctorate in Business Administration from The University of Huddersfield and an Honorary Fellowship of the Chartered Insurance Institute. SimplyBiz HR director Emily Blain said: "As an employer SimplyBiz aims to be an exceptionally innovative, fun, and challenging workplace. We want the people who work for the business to enjoy being part of the team and feel passionate about doing a great job while they're here."



Ken Davy

BUSINESS PROFILE

8. FMG SUPPORT GROUP

Accidents and breakdowns on the UK's busiest motorway networks and roads can cause huge delays.

Speed is vital to solving the problem and that rests in the hands of the FMG Support Group. For this company based on Bradley Business Park in Huddersfield solves these issues nationwide for clients including the Highways Agency, several police forces, insurance companies, vehicle lease hire firms and major businesses that have fleets of company vehicles.

If the worst happens they all turn to FMG for help and its staff will organise removing the damaged vehicles, sorting out a replacement and dealing with all the administration and hassle these incidents cause right through to the damaged vehicle being

returned fully repaired. FMG now manages half-a-million vehicles and attends an incident every three minutes.

FMG is the leading company in the UK providing such a complex and comprehensive service. The Highways Agency (now Highways England) has relied on FMG since 2008 to manage all the vehicle recovery incidents it deals with on 4,300 miles of motorways and significant A-roads. The results are impressive with 98% of all recoveries attended within an hour, 92% of lorries removed within an hour and 80% of cars removed within 45 minutes. Quick decision-making is a vital part of FMG's success so within an hour of an incident a replacement vehicle is arranged and FMG's fast-acting incident management specialists log all the incident data,

assess liability and contact the owners of the other vehicle to offer repair and replacement services. If the FMG client is at fault the costs claimed by the other driver can quickly spiral out of control which is why FMG acts so fast to sort this out at a very early stage and save money. FMG has scooped lots of awards and the latest was Fleet Supplier of the Year at the Business Car Awards 2021.



Major incidents on motorways can cause huge tailbacks and cost the economy millions of pounds

BUSINESS PROFILE

9. MABEY HIRE LTD

Mabey Hire is an award-winning hire company that also carries out major engineering projects and has been at the forefront of its industry for 60 years.

Based at Scout Hill in Dewsbury, it has a 70-strong engineering team among its 400 national workforce who have completed temporary works schemes for some of the most complex and largest construction and infrastructure projects in the UK. Temporary works are needed at the early stage of huge construction projects such as propping for bridges while they are being built and the company worked on the Mersey Gateway bridge in Widnes, a multi-million pound scheme that took more than three years to build across the Mersey estuary and 80,000 vehicles now use it every day. It opened in October 2017 and provided relief from the huge traffic congestion in the area by forming part of a wider

regeneration project and a new improved link road between North Cheshire and Merseyside. Mabey provides a complete service from design, supply, installation and monitoring for planned, reactive and emergency projects and also has the UK's widest range

of temporary works equipment for hire. Safety is top of the agenda and Mabey has achieved the Royal Society for the Prevention of Accidents' President's award after 10 consecutive years getting the RoSPA Gold award.



Maybey Hire Ltd. Propping on the Mersey Gateway bridge in Widnes before the concrete was installed.

BUSINESS PROFILE

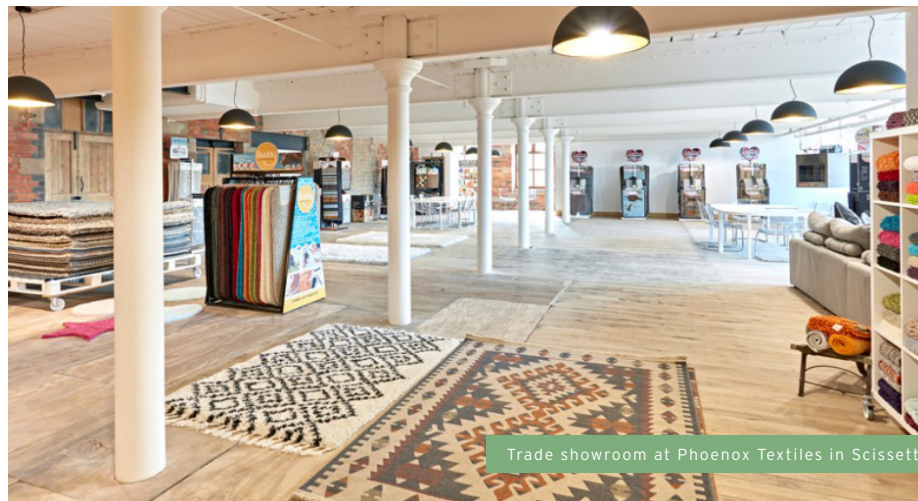
10. PHOENOX TEXTILES LTD

Phoenix Textiles has now been going for almost 70 years in Scissett and has grown to become one of the UK's leading textile manufacturers.

It's the country's main manufacturer of rugs and mats for the home and has a phenomenal record when it comes to caring for the environment.

This family firm sends nothing to landfill and has amazing recycling schemes such as one which uses more than 7.5 million plastic bottles every year to create the extra tough membrane that bonds tufts to the backing on all its mats. The brand portfolio now includes Hug Rug, My Mat, Howler & Scratch pet mat range, Dip & Drip bathroom mats, Buddy stain resistant rugs and the Phoenix Rug Collection. The company also works with top retailers to provide their own in-house brands. Phoenix also makes other products such as throws, cushions, aprons, tea towels, oven gloves and hob covers.

The company, which employs more than 200 people, is also the highest-placed SME in the top 100 companies in Kirklees and you can read more about them on P8.



Trade showroom at Phoenix Textiles in Scissett

Public Sector Organisations

Public, health and education sectors who are the important anchor institutions shaping the well-being and future prospects of our community.

KIRKLEES COUNCIL

Kirklees has a population of around 440,000, and every single Kirklees resident benefits from services provided by the council.

Kirklees Council is probably the district's most varied employer. It employs around 6,000 people in a colossal range of roles, both office-based and out and about across the borough.

The council's work covers everything from road improvements to welfare support, from housing to health and social care, and from heritage to brand new regeneration projects. It serves an equally diverse region, featuring prominent towns like Huddersfield and Dewsbury alongside picturesque villages bordering the Pennines.

All its work is led by councillors who

together represent the district, and it provides services for anyone who lives in, works in or visits Kirklees. With this level of variety comes great opportunity, for anyone with any skillset. The council also provides a vast range of support and advice for local businesses through Business Kirklees.

KIRKLEES COLLEGE



The college now trains more than 1,000 apprentices every year.

It was formed in 2008 with a merger of Huddersfield Technical College and Dewsbury colleges to become one of the biggest in the country with a main centre in each town plus other specialist teaching hubs. Its 300 vocational courses include construction, engineering, manufacturing, animal care,

apprenticeships, business, hospitality and catering, hair and beauty, health and social care and it also offers music, performing arts and media courses. The college works closely with around 1,000 local employers across West Yorkshire to make sure the courses and qualifications it provides are meeting the skills these businesses need.

CALDERDALE AND HUDDERSFIELD NHS FOUNDATION TRUST

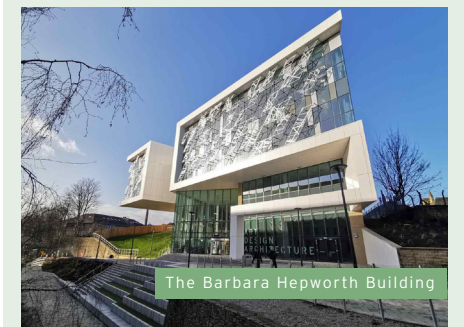
The Trust employs more than 6,500 staff at its two main hospitals, Huddersfield Royal Infirmary and Calderdale Royal Hospital, as well as in community sites, health centres and patients' homes.

The services include urgent and emergency care, medical, surgical, maternity, gynaecology, critical care, children's and young people's services, end of life care and outpatient and diagnostic imaging

services.

In 2021/22 the Trust cared for around 108,000 men, women and children as either inpatients or day cases. There were also almost 439,000 outpatient attendances, 172,000 people were treated in accident and emergency attendances and 4,700 babies were delivered.

There were some 322,000 adult services contacts by the Trust's community teams as well as 212,000 contacts with its therapy services.



The Barbara Hepworth Building

UNIVERSITY OF HUDDERSFIELD

The university has been transformed over the last 14 years with £156m of developments

Since Professor Bob Cryan - who comes from Deighton - was appointed Vice Chancellor in 2007, the university has won a clutch of awards and its eye-catching new buildings have changed Huddersfield's skyline, a constant reminder of how vital the university now is to the town's economy and prosperity. It has more than 20,000 students from more than 130 countries who contribute an estimated £300m to the Huddersfield economy.

KIRKLEES ACTIVE LEISURE

Kirklees Active Leisure (KAL) is a charitable trust which manages 13 leisure centres and swimming pools on behalf of

Kirklees Council.

It also manages Bradley Park Golf Course in Bradley, Huddersfield. Since it was created in 2002, more than £60m has been reinvested by Kirklees Council and KAL into local leisure centres.

KAL centres have around 3 million visits per year with more than 26,000 members and over 7,000 people doing swimming lessons. Its annual turnover is more than £15m.

Apart from the gym equipment and swimming pools, organised classes range from gentle exercises for older folk through to high energy body pumping workouts and studio cycling.



Huddersfield Leisure Centre

Significant employers

Major companies who contribute a great deal to our business community and offer rewarding careers for local people

SYNGENTA

Syngenta has been a major employer in Huddersfield at its landmark site on Leeds Road for decades and is also greatly involved in community and charity work across Kirklees.

As one of the world's leading agricultural companies, it helps millions of farmers worldwide grow higher yields with a range of chemical-based products that help protect plants from weeds, pests and disease.

Syngenta community and business relations manager Carl Sykes said: "We continue to invest in our apprenticeship programme, providing employment opportunities for local people and remain committed to keeping professional and skilled manufacturing jobs in Kirklees for

many years to come."

The company - formerly ICI and then Zeneca - employs about 400 people in Huddersfield and has invested millions of pounds into the site in recent years.



Apprentices training at Syngenta are (from left) science manufacturing apprentice Oliver Thornton, laboratory scientist degree apprentice Amelia Dawson and electrical engineering apprentice Joe Flynn.

CUMMINS TURBO TECHNOLOGIES

Cummins employs hundreds of people at its base on St Andrews Road, Huddersfield, where it manufactures medium to heavy-duty diesel engine turbos.

The story began in March 1952 as Holset Engineering Co Ltd founded by business partners Brian Holmes and Paul Croset - hence the name Holset which combines their surnames - and began manufacturing turbochargers

in the town in 1958 before it was bought by Cummins in 1973. Around 40% of the world's lorries are powered by a Holset-branded turbocharger including major names such as Volvo, Scania, DAF, MAN and Ford. Cummins also designs and manufactures turbochargers for buses, trains and ships.

ADARE SEC LTD

Adare SEC helps businesses to communicate with its customers as effectively as possible using everything from print to emails and text messages.

This can be quite a complex task when large companies have to deal



Adare SEC chief operations officer Tom Prestwich

with different customers in different ways with some wanting communications by letter while others are happy to receive emails and texts. Adare SEC are also experts at helping

businesses to communicate with people who are vulnerable or have special needs such as sight loss. Adare SEC was established in 2006 at Clayton West with its roots traced back to the former Waddington Business Forms that was based on the same site. It now employs 380 people and also has sites in Redditch in Worcestershire and Nottingham. Between them they produce hundreds of millions of important customer communications every year ranging from PINS for credit cards and bank statements to welcome packs for new customers joining businesses ranging from banks to insurance companies.

KOBER LTD

Cleckheaton-based Kober Ltd and Forza AW Ltd based in Normanton used to be owned by entrepreneur Max Smith-Hilliard from North Yorkshire with Kober supplying bacon to Asda and Forza supplying cooked meats to the Leeds-based supermarket giant.

They had been Asda's sole suppliers since January 2011 and after a successful five-year joint venture with the businesses Asda-owned International Procurement and Logistics (IPL) exercised its right to purchase the companies and add them to its portfolio.

IPL chief executive Nick Scrase said at the time: "Our one defining strategy that drives our business model is to simplify supply chains by cutting out the middle-man and then passing these cost savings onto Asda customers.

"We have had a hugely successful partnership with Max Smith-Hilliard over the last five years which has driven significant savings and created a world-class business which we are proud to be bringing into the IPL family."

LAWTON YARNS

The UK's largest woollen yarn spinner and a truly Kirklees company as Lawton Yarns started out in Huddersfield and then moved to Dewsbury.

The company was established in 1902 by Fred Lawton and this family business was originally based in Huddersfield, firstly at Lockwood Mills and then at Firth Street Mills, before relocating to Ravens Ing Mills in Ravensthorpe.

Lawton's supplies woollen yarns to all major carpeting manufacturers in the UK and exports to Europe, Asia, and America. Without Lawton, the UK market would be reliant on international imports. The company is in private ownership following a £13.4m management buy-out earlier this summer.

Book an Open Day

Autumn and summer campus and accommodation tours, subject talks and more.

Book now
hud.ac/open-days



Significant employers

MARS

Everyone knows about the famous Mars bars - but that's just a fraction of what this global company does.

It's also a major manufacturer of pet foods with a factory in Birstall and big brand dog and cat food names Mars produces include Whiskas, Pedigree, Iams, Sheba and Cesar.

The confectionary brands also include Snickers, Twix, Galaxy and Maltesers along with Orbit chewing gum. Foods include Dolmio pasta sauces and Uncle Ben's rice which has recently changed its name to Ben's Original. Mars was founded in 1911 when Frank Mars made the first sweets in the kitchen at his home in Washington,

USA. It now employs 130,000 people at 454 sites in 80 countries.



Staff packing pet food at the Mars factory in Birstall

JOHN COTTON

John Cotton is one of the UK's leading manufacturers of pillows, duvets and mattress protectors using the very latest fibre technology.

This Mirfield-based family company was set up in 1916 and now has a

1,000-strong workforce across its group of companies producing 20 million pillows and 10 million duvets every year.

The group also includes the Slumberdown and Snuggledown brands along with John Cotton Europe which recently opened a new factory in Poland, providing 100 new jobs.

In 2017 John Cotton bought Australia's leading pillow and duvet producing business, Tontine, which has an annual turnover of £25m, employs 90 people and is located near Melbourne.

The company is led by chairman John Cotton who took over from his father in 1965.



Chairman John Cotton

FOX'S BISCUITS

The company's roots can be traced back to 1853 when Michael Spedding baked his first batch of brandy snaps and sold them to shops, traders and shows from his Batley bakery. When his son-in-law, Fred Ellis Fox, took over in 1897 he renamed it F E Fox & Co.

The Batley factory now bakes 6 million biscuits a year that are munched worldwide. Some of the UK's most loved Fox's biscuits including crunch creams, crinkle crunch, Viennese and party rings for kids. For special occasions such as Christmas, Fox's do an indulgent chocolate selection tin simply called

Fabulously. The Fox's website features lots of recipes you can bake using their biscuits.

Fox's is now owned by the Wakefield-based 2 Sisters Food Group which also owns Holland's, a Lancashire baker famous for its pies.



Staff on the production line at Fox's Biscuits factory in Birstall

INCORA (FORMERLY WESCO)

Aircraft consist of tens of thousands of parts but if something needs replacing where do you get it from?

Well, Incora - formed when two major aircraft parts companies Wesco Aircraft and Pattonair joined together in 2020 - has a warehouse in Clayton West. It's a global company which stocks well over half-a-million components from more than 6,000 different suppliers including engines, airframes, landing gear, electronics, bearings, sensors, chemicals and tools.

The company has thousands of customers and its huge number of suppliers means they only need to go to one place for their parts rather than trying to source them from individual suppliers.

Wesco was founded in the USA in 1953 and expanded into Europe in 1988. Pattonair was founded in Weybridge, UK, in 1970.

Major customers include aircraft and engine manufacturers such as Boeing, Airbus, Rolls Royce, Pratt and Whitney, General Electric and GKN Aerospace.

LV=

Almost 400 people work in this insurance giant's call centre in one of Huddersfield's oldest buildings.

The open plan call centre is in restored cotton mill Folly Hall Mills at the bottom of Chapel Hill and has been home to the company's centre since 2010, dealing mainly with motor claims and general customer care inquiries.

Formerly known as Liverpool Victoria with a history stretching back to 1843, the insurance side includes home, car, travel, pet and life.

As a mutual company it's owned by its policy holders and now has 1.25 million members. It has 7 million customers and a 4,000-strong workforce.

The business also works with a range of financial advisers and through them sells LV= products including life insurance, income protection, investments and retirement income solutions such as equity release and fixed term annuities.

FUTUREGOALS

Inspiration and support to help people of all ages choose the career paths that work for them

FutureGoals is an all age careers inspiration platform. On the website you can access a wide range of information, support and resources including:

- Resources in a range of areas aimed at school and college learners, careers leaders and teachers
- Parent and carer resources to help support young people into those next steps and help parents / carers understand more about qualifications, jobs and apprenticeships
- An interactive report to help everyone understand more about the job market and opportunities in West Yorkshire
- Fully funded training courses through our Skills Connect programme, supporting anyone aged 19+ and living in West Yorkshire to progress in their current job or change careers
- Buzz quiz which will help you understand more about your personality
- View live employment, apprenticeship and training opportunities in West Yorkshire through FutureGoals Jobs
- Access careers support for young people and adults alike.

For all this and more, visit

 **futuregoals.co.uk**

Innovation spotlight

Our panel's choice showcasing some of the most innovative companies in Kirklees

ASSOCIATED UTILITY SUPPLIES (AUS) LIMITED

Identifying customer and industry needs to solve 'real life' challenges through innovation and University collaboration.

Innovation is at the heart of AUS that boasts a dedicated Product Innovation team specialising in developing new and existing products that solve challenges

that affect its target industries. Whether it's improving safety, reducing weight and number of components in assemblies, or designing brand new products in response to industry needs. Since 2016, AUS has been collaborating with the University of Huddersfield and its Institute of Railway Research Computing & Engineering, through a Knowledge Transfer Partnerships (KTPs), a three-way relationship between a company, a university and a post graduate student. The KTP has led to innovative product design for the rail industry and kickstarted other ongoing active research projects with the University. AUS has also been working closely with the LCR Supply Chain Programme to support its business growth. Investing in developing young talent is entrenched in the company's philosophy and over the years has taken on placements students from the University of Huddersfield, as well as KTP associates that now have permanent roles within the business.



The Bridge team at AUS

WOODCOCK & WILSON LIMITED

'Fanatical' about fans and pushing the boundaries of what is possible by challenging what they know.

For over 45 years, Woodcock & Wilson has been making world-leading industrial fans for thousands of companies, including some of the world's biggest organisations in the oil and gas, pharmaceutical and chemical industries. It has also developed fans that can operate in potentially hazardous or explosive environments. Each fan they produce is bespoke, designed by its team of highly skilled designers and engineers that have over 120 years' combined experience in manufacturing. The company prides itself on delivering unique and simple solutions to complicated projects that focus on quality, innovation and service. Based in Huddersfield, the business is working with the University of Huddersfield and its Computing and Engineering school as part of a Knowledge Transfer Partnership (KTP) to produce its own in-house product and design configurator tools (fan selection and design software). In keeping with its Industry 4.0 objectives, the new

software seamlessly integrates the company's design and engineering tools to produce bespoke fan designs, as well as streamlines its quote and sales to pipeline processes through its

CRM package. Eventually the tools will communicate with factory machines via another software to aid its materials requirement planning (MRP) once an order has been placed.



ESSENTIAL HEALTHCARE SOLUTIONS (UK) LTD

Optimising care, safety, comfort and dignity are key to making an essential difference in healthcare ultimately patients.

Essential Healthcare is the UK's leading support surface specialist that designs and delivers advanced, innovative solutions for pressure area care and cross infection prevention that make an essential difference. Committed to optimising performance, reliability and durability, its highly

skilled and experienced team leads on the design and specification of its products focus, alongside selected partners, that deliver better patient outcome, organisational efficiency and value for money. Its product portfolio includes mattress and support surfaces that meet the challenges customers face daily. They help reduce avoidable pressure ulcers, prevent cross infection and improve equipment safety through its service

and repair, rental, decontamination and rental solutions. The company, based in Birstall, was awarded a Queens Award for Innovation in 2022 for its patented range of Trezzo HS pressure area care support surfaces that help reduce the risk of developing pressure ulcers. Trezzo is set to revolutionise pressure area care and help reduce failure rates and provide a more cost-effective and sustainable option for customers.

IONIX ADVANCED TECHNOLOGIES

High temperature devices reduce the need for plant shutdowns, leading to millions in cost savings, greater productivity and increased safety.

Set up in 2011 by Drs Tim Comyn, Tim Stephenson and Andrew Bell, Ionix is a leading ultrasonic and piezoceramic specialist that develops devices that can be used in high temperature environments. Applied in sectors across the globe such as oil, gas, energy, aerospace and automotive, the high temperature devices can be used in extreme conditions for thickness and crack monitoring, flow measurement and position sensing. They can also support inspection programs by enabling stable and reliable remote monitoring solutions that lead to greater productivity and increased safety. Now a team of 23 and based at the 3M BIC, Ionix has worked closely with academics from

the University of Huddersfield on analytics, x-ray diffraction and electron microscopy, as well as the National Physical Laboratory (NPL) on coordinate mapping and surface measurement. Its transducers are the only standalone high temperature transducers in the world that have achieved the highest safety certifications for explosive environments, a key requirement for many oil and gas applications.



MAGMA GROUP

Revolutionising the catalyst market to help improve hydrogen production and lower energy costs after noticing a gap in the market

Dewsbury-based Magma is a world leader in the manufacture and supply of a wide range of refractory, ceramic and catalyst materials and technology worldwide. With over 40 years' experience in the ceramics industry, its mission is to grow and develop through ongoing innovation,

research and development in order to offer an increased product range and secure its future growth plans. It has experienced accelerated growth over the last 12 years with the acquisition of P&E in Huddersfield and a merger with UNICAT. It operates its four core business areas Catalysts, Ceramics, Combustion, Electrical Control Panels from its P&E site, and has four other UK facilities, as well as worldwide in

Vietnam and the US. Magma was recently honoured with a Queens Award for Enterprise, which recognised the development of its SMR Catalyst. Magma noticed a gap in the market for a new catalyst that could improve hydrogen production and lower energy costs, which led to the creation of its unique spherical catalyst with a distinct textured 'golf ball' like surface.

KIRKLEES TOP 100 - THE LIST

1



Based in Huddersfield and founded in 1999 by Nick Glynn, Buy It Direct sells products such as laptops, kitchen appliances, TVs, furniture and bathrooms through a network of websites including Laptops Direct, Appliances Direct and Furniture 123. The group now employs more than 800 employees with sites nationwide serving the whole of the UK.

2



Based in Linthwaite, Huddersfield, Thornton & Ross has been caring for its customers since 1922. Thornton & Ross is one of the UK's fastest-growing, leading producers of household pharmaceutical products, and own some of the country's most loved brands such as Covonia®, Hedrin®, Cetaben® as well as the leading disinfectant Zoflora®. It is a trusted and reliable provider of prescription products, including emollients, bone health products and generics, to the NHS with almost 100 years' heritage. Thornton & Ross is part of the STADA group. STADA Arzneimittel AG is a publicly-listed company with headquarters in Bad Vilbel, Germany. Worldwide, STADA Arzneimittel AG sells its products in approximately 120 countries.

3



Founded in 1883 as Pittsburgh Plate Glass by Captain John B. Ford and John Pitcairn in Pittsburgh, Pennsylvania. Today, PPG is a global supplier of paints, coatings, optical products, and specialty materials. With a base in Birstall, PPG in the UK manufactures the market leading Johnstone's and Leyland paint brands which offer an extensive range of coatings and finishes for the DIY consumer and professional decorator. They are a global leader in paints, coatings and materials, operating in more than 70 countries. They work side by side with customers in the following industries: Construction, Consumer products, Industrial and transportation markets and aftermarkets.

4



Originally founded as Isaac Timmins Ltd in 1929, the Myers Group can trace its modern day heritage back to 1959 when Readymix Huddersfield was incorporated. The Readymix operation has since expanded into a regional business with four strategically located manufacturing plants. Group companies also include Johnsons Wellfield, founded in 1854 and acquired by the Myers family in 1979. Johnsons Wellfield is Britain's leading supplier of natural hard Yorkstone and the only division of the Group trading on a national basis.

5



PCSpecialist are Europe's leading system integrator, specialising in build to order PCs, Laptops, AIOs and Servers. They focus on building high-performance systems for enthusiasts, gamers & professionals. Established in 2003 in the United Kingdom, they speak 10 languages and supply computers to over 30 countries across Europe. They have registered branches in France, Italy and Spain, a subsidiary in Germany and are registered for VAT in 13 countries.

6



Founded in 1987, Tandem 1987 also known as Principle Group is an international brand implementation company headquartered in Huddersfield, UK, with 23 offices in 70+ countries around the world. Clients span many sectors including Automotive, Corporate & Industrial, Financial Services, Health & Wellness, Hospitality & Leisure, Retail and Telecommunications & Media.

7



FINTEL PLC is the new name for Simply Biz. For nearly two decades, SimplyBiz has been the UK's leading support services business, powering thousands of intermediary businesses through its leading brands - SimplyBiz, Compliance First, SimplyBiz Mortgages, SIFA Professional, FIBA, APS Legal & Associates, Gateway Surveyors, the Consumer Credit Centre, and Signature. Fintel are committed to simplifying and improving the complex world of financial services and to creating a better outcome for everyone.

8



FMG was established in 1986 in Huddersfield and remains one of the largest private employers in the town. Over the last 30 years FMG have experienced substantial growth in core Incident Management markets. Today, FMG is one of the UK's only Incident Management and Roadside Services Specialists committed to reducing the frequency and impact of incidents. They deliver business-critical, 24-hour vehicle and driver support to Blue Chip customers, Leasing Providers, Motor Insurers, Highways England and several Police Forces.

9



Mabey Hire are an award-winning temporary works specialist, and have been at the forefront of their industry for 60 years, building a reputation for engineering and service excellence. Mabey Hire has a 70-strong national engineering team - who have delivered temporary works schemes for some of the most complex and largest construction and infrastructure projects in the UK offering a complete in-house solution from design, supply, installation and monitoring for planned, reactive and emergency projects and the UK's widest range of temporary works equipment for hire.

10



Established in 1954, by Jack Mosley. Jack was a local weaver who began by making fabric for bus seats and traditional hearth rugs that were woven from locally sourced wool and acrylic and cotton from Lancashire. Three generations later they are still manufacturing at their two sites in Scissett, Huddersfield.

11



Incorporated in 2016, Cubico is the market-leading bathroom company supplying a range of high-spec products including baths, showers, taps and toilets. With an emphasis on high quality and low cost, they provide the UK's bathroom trade with a high quality product and unparalleled customer service.

12



Established in 1990, Status International (UK) Limited, ("Status"), is an independent supplier of lighting and electrical accessories. Status is run by father and son, Peter and Nicholas McVeigh, who between them have over 80 year's combined experience in the lighting industry. Today, Status boasts a customer base across the UK and Europe including major national retailers, wholesalers, independent retailers and electrical wholesalers. In 2016, Status celebrated its 25th anniversary. Status is located at its head office in Cleckheaton, West Yorkshire, with a warehouse, distribution centre, in house design studio and laboratory. In 2014, Status were part of an elite group of national companies that featured on the fastest growing profit stars list compiled by the Sunday Times BDO Profit Track 100.

13



Founded in 1997, Orian is an award-winning private label cosmetic manufacturing company operating in the UK and USA. They specialise in producing high-end skin and hair care products and over the years have developed an award-winning reputation for quality, service and speed.

14



A worldwide organisation, based in America and with a site in Cleckheaton, MRC Global was established in 1921. MRC Transmark aim to be the world's leading provider of PVF products and solutions to the energy and industrial markets. MRC Global provides a broad range of valves that are available in a wide variety of materials from today's leading valve manufacturers to fully meet even the most complex and unique requirements.

15



Brothers Tom and Howard started Furniture Choice in 2005 on a simple idea that stylish, quality furniture should be available for all. Changing their name to Furniture and Choice in 2020, their new name reflected their purpose to make it easy for customers to transform their homes.

16



Founded in 1860 as a pattern manufacturing company by 1873 David Brown had begun to concentrate on gear systems and by 1898 was specialising in machine-cut gears. The company moved in 1902 to Park Works at Huddersfield, where they are based today. In 2016, David Brown and Santasalo joined forces to become one of the world's leading mechanical power transmission brands bringing together almost three centuries of combined gear engineering leadership and substantial geographic coverage. Located in 28 global locations with over 1,100 employees, a strong track record for reliable performance coupled with a rich brand heritage and proven application experience.

17



Magma Ceramics & Catalysts is a manufacturer and supplier of a wide range of refractory, ceramic and catalyst materials and technology throughout the world. Since the company's inception in February 2010, following the management buyout of the former Dyson Group business, Dyson Precision Ceramics, they have enjoyed continual and significant growth from 24 employees in 2010 to over 200 at present. They have three divisions, notably 'Magma Ceramics', 'Magma Catalysts' and 'Magma Combustion' and operate worldwide from their facilities in the UK and Vietnam. Magma currently operate manufacturing plants in Wallasey, Wirral (UK), Bolton, Greater Manchester (UK), Dewsbury, West Yorkshire (UK Head Office) and Vietnam.

18



Founded in 1920, Reliance Precision provides custom, high reliability, precision instrumentation to customers from global markets. Engineering capabilities include design, development, prototyping, manufacturing, assembly and test, with a catalogue of precision motion control components and electro-mechanical assemblies.

19



NL originally dates back to 1985 when Nigel Lella first purchased the Rouse Mill Lane site in Batley, West Yorkshire. NL Commercial is a family owned vehicle rental company, supplying vehicle hire solutions for over 35 years. NL is now the largest Independent rental company in the North of England, supplying over 2500 vehicles Nationally.

20



Locala was created in 2011 to take on the NHS community healthcare services previously provided as part of Kirklees Primary Care Trust. There was an ambition and determination to be flexible and innovative. Locala Health & Wellbeing is a not-for-profit community healthcare provider offering a variety of NHS services to care for and support people of all ages. Locala employs around 1500 people who are all committed to delivering the very best services to patients.

KIRKLEES TOP 100 - THE LIST

21



From small beginnings in 1975, Trojan has become one of the largest manufacturers of acrylic baths in Europe, with a reputation for manufacturing high quality products. As a company they continually invest in new designs, plant and equipment in order to keep moving forward and in an ever evolving, fiercely dynamic and competitive global market.

23



Originally founded in 1878, TMD Friction are a Nisshinbo Group company. They are the global leaders in brake friction technology. From passenger cars, racing cars and commercial vehicles to industrial applications, they drive excellence through effective, reliable and safe braking solutions. With over 135 years in the braking friction industry, they are among the world's largest manufacturers of brake friction materials and are trusted by the biggest brands in the automotive and industrial sectors.

25



The CoGri Group is a consortium of floor solution specialists and has over 31 year's global experience in the design, construction, testing, surveying and upgrading of industrial concrete floors. The Group has over 200 employees worldwide across 23 companies with offices in 14 countries. They offer services throughout Europe, North and South America, Oceania, Africa, Asia and the Middle East.

26



TOG24 was founded by Donald Ward in West Yorkshire in 1958. Based in the Spen Valley town of Heckmondwike, initially produced footwear, branched into sports bags and football kits in the 70's before finally landing on waterproofs and fleeces. As the brand grew in popularity skiwear and casual clothing were added.

28



Established in Huddersfield in 1870, with its principal office in Edgerton and twelve branch offices in Bradford, Dewsbury, Elland, Huddersfield, Halifax, Holmfirth, Leeds, Milnsbridge, Mirfield, Slaithwaite, Wakefield and York, Ramsdens is perfectly placed to build on its 150 year's heritage in the area. With 260 team members, working in 12 different practice areas, across 14 offices and solicitors and support staff fluent in 7 languages, Ramsdens offers the full spectrum of legal services to organisations and to the individual.

29



Interior Good Direct Limited have been trading exclusively online since 2003. Since their launch they have grown from a handful of people to one of the UK's largest online retailers of high quality home furnishings. They supply all kinds of window dressings, including: Wooden Blinds, Roller Blinds, Vertical Blinds, Curtain Poles, Ready-made and Made to Measure Curtains, Cushions, Roman Blinds, Plantation Shutters and Pleated Blinds and manufacture nearly everything in their facility in Grange Moor, Yorkshire.

21



UKG are one of the largest direct to retail publishers of greeting cards and social expression products in the UK and also one of the leading greeting card manufacturers. They are part of the American Greetings family, which is one of the largest greeting card publishers in the world.

24



Established in the UK in 2002, Dr Reddy's Laboratories is part of Dr Reddy's group, an integrated global pharmaceutical company committed to accelerating access to affordable medicines. The UK portfolio of prescription medicines spans across major therapeutic categories and a variety of forms are available.

27



Frame-Tech, which was founded in 2008, manufactures and installs more than 1,000 homes a year across the north of England and employs around 60 people. FrameTech have grown into one of the largest timber frame manufacturers in the UK.

30



Established in 2002, Valli Forecourts is a well established family owned business based near Leeds, West Yorkshire. The company originated when brothers Haroon and Farook became commission operators in 1993, taking on sites with Margram, Shell and Esso. The turning point was in 2002 when BP decided to sell its network. Valli Forecourts was established with the acquisition of four sites and then a further two within months. Valli Forecourts currently operates a diversified portfolio of 15 petrol forecourts and convenience stores throughout England from Birmingham to Stockton-on-Tees and in between.

31



Fighting fire with innovation since 1965, Angloco Ltd designs, manufactures and supplies firefighting and rescue vehicles and equipment. It has customers in over 50 countries world-wide, supported by comprehensive after-sales service and spare parts back-up.

34



Architectural Steel Ltd is a market leading manufacturer of flashings and fabrications to the industrial roofing and cladding industry. Offering an extensive range of bespoke products from architectural features and bullnoses to louvers, flashings and rainwater management systems to complement the main building envelope.

36



Established in 2002, Highgrove is one of the UK's fastest growing bed brands and currently produce approx. 5000 beds a week from their new manufacturing plant in Liversedge, West Yorkshire - one of the biggest and most modern in Europe. Highgrove are a privately owned, family business.

39



Spinners of Quality Yarn for Over 200 Years, Harold Hinchliffe Limited was founded in 1766 as a trading company and in 1850, they built their company head-quarters in the rural, picturesque Yorkshire village of Denby Dale, and it remains in the very same place to this day.

32

Spectrum Yarns Ltd

Established in 1973, Spectrum Yarns Ltd is a family run worsted spinning textile mill based in Slaithwaite, West Yorkshire, manufacturing and supplying yarns worldwide, for weaving, machine knitting, hand knitting & upholstery. Spectrum Yarns manufacture yarn for many end users and also manufacture their own knitwear brands Glenbrae and Slaith alongside a hand knitting brand, Stylecraft.

35



Since its formation in 1992 Yorkshire Building Services has established itself nationwide in the Mechanical and Electrical industry. From their head office location in Yorkshire they operate throughout the UK with over 100 employees. They have a practical approach to design and endeavour to provide clients with good value and innovative engineering solutions.

37



For more than 40 years Aflex Hose has been inventing, developing and manufacturing the widest, most technically advanced range of PTFE lined flexible hose products in the world. More than 10 million cars, ATVs, trucks and motorbikes on the roads today include one or more Aflex PTFE hoses.

40



Camira's modern day origins began in 1974 when they were founded under the name Camborne Fabrics in the UK's textile heartland in Huddersfield in the UK. Now based in Mirfield, Camira Fabrics design and manufacture upholstery and panel textiles for every space and sector, from commercial and education, to healthcare and hospitality, to passenger transport including bus, coach and rail. Camira make more than 8 million metres of fabric a year. Their team of innovators design and make some of the world's most adventurous and environmentally sensitive fabrics. Their expertise covers wool spinning and polypropylene yarn manufacturing, yarn dyeing, weaving on dobby, jacquard and plush looms, technical knitting, textile finishing and upholstery services.

33



Ian Firth Hardware Ltd was established in 1982. In 1988 the company branched out into Patio Doors, Garage Doors and Internal Doors, offering a supply and fit service for some products. By 1995 the company started selling Composite Doors, steel and GRP faced, and invested in cutting machinery to be able to customise the doors to meet the designs the customers wanted. By 2007 turnover had hit over £12m with its own fleet of vehicles delivering across the country every week.

KIRKLEES TOP 100 - THE LIST

41



Founded in 2003, Vascular Perspectives is a medical device sales organisation, with unique and innovative products for use within interventional cardiology and radiology. They have a passion for education and product support, working with key opinion leaders to communicate new ideas and technologies.

42



Established over 100 years ago, Longwood Engineering are industry-leading specialists in automated screens and screenings handling equipment. They work with organisations who need advanced water filtration expertise, from municipal water and wastewater companies to fisheries, distilleries, dairies and abattoirs, nationally and across the globe.

43



Trading successfully since 1995, Videcon is a leading trade-only distributor of security products and services. Videcon's expertise encompasses all aspects of security distribution from products to training and after-care service.

52



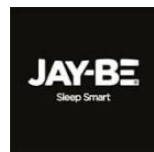
Established in 1981, Mamas & Papas have been helping parents grow their families for over 40 years. From award-winning baby products to expert help and advice, everything they do is designed to make life a little easier for real parents, living real lives.

53



Westex were founded back in 1977 as 'ST Carpets' in the sheep farming and textile heartland of West Yorkshire in the UK. A private company, Westex Carpets was originally the concept of a master dyer who wanted to offer a wider range of colour and quality within carpet manufacture. Today, they continue to draw on and develop that legacy with three dedicated manufacturing hubs.

44



Founded in Yorkshire, Jay-Be®'s heritage can be traced back to the early days of the industrial revolution. Born out of a passion for comfort innovation and manufacturing, they have evolved throughout generations to become well-known for creating industry leading sleep products which are functional, innovative and environmentally conscious.

45



Cutwel have been servicing the UK & Irish engineering industry for over 25 years. Established in 1996 as a small family run company, Cutwel has grown to become one of the largest independent engineering tooling suppliers in the United Kingdom, with a turnover of £20m, serving over 10,000 precision engineering companies nationwide.

45



Dual Seal Glass Limited started business in 1995 when father and son David and Nigel Meredith decided to create a Huddersfield based company strategically developed to supply a local market with insulating glass units incorporating a unique Low E soft coat product newly available to the industry at this time. This decision immediately placed Dual Seal Glass as a market leader in product choice which was linked with an ethos of quality and service that has carried through to the present day.

54



Ernest Brook made his first motor in Huddersfield, UK in 1904 forming Brook Motors, whilst Colonel Crompton had formed R.E.B. Crompton & Co in 1878. The two organisations came together in the 1970s to form the company that is now recognised the world over as Brook Crompton. Brook Crompton is a leading provider of energy efficient electric motors, known for delivering quality and innovation for over a century. Driven by technology and innovation, Brook Crompton has a comprehensive range of low, medium and high voltage motors for safe and hazardous duty designed to provide cost effective, energy-saving solutions across a range of industrial processes. Their drives packages can provide assured efficiency and reliability in a use-friendly variable speed drive system.

55



Owens-Corning Veil U.K. LTD. was founded in 1951 and has its registered office in Liversedge. They manufacture and advancement of a broad range of insulation, roofing and fiberglass composite materials. Leveraging the talents of 19,000 employees in 33 countries, Owens Corning provides innovative products, manufacturing technologies, and sustainable solutions that address energy efficiency, product safety, renewable energy, durable infrastructure, and labor productivity.

45

SHAW & RHODES HOLDINGS LIMITED

48



With a base in Huddersfield, Continental Wine and Food Ltd was established in 1960 and is a leading wine and alcoholic drinks importer, producer, bottler, wine supplier and distributor, with worldwide product sourcing from Eire, Europe, South Americas and Australia. They offer an extensive product range of still & sparkling wines, fortified wine, ready to drinks and speciality mixer drinks, with a substantial bonded manufacturing and winery facility offering focus on quality, innovation & service.

56



Incorporated in 2012, Woodgreen's aim is to work in partnership with clients, design team and supply chain to deliver every project with first class levels of service. The aim is to be their clients' first choice contractor. Projects range from a few thousand pounds to £4million, and Woodgreen believe in delivering every solution on time and on budget. Each client receives an approach tailored to their individual needs.

57



Established in 1902 by Fred Lawton, this privately owned family business has seen many changes throughout the century. Originally based in Huddersfield, the company was founded at Lockwood Mills and for many years thereafter at Firth Street Mills. Today the factory is located at Ravens Ing Mills in Dewsbury. This site accommodates a wide range of yarn producing activities to provide the carpet industry with quality yarn products. It houses state of the art showrooms and colour matching facilities.

49

THOMAS OWEN HOUSE

specialist nursing & residential care

Thomas Owen House in Dewsbury, West Yorkshire, was bought by Kevin and Ann Martin in 1988 and was opened as a nursing home for older people with mental health needs in 1989. It is a specialist nursing care home providing high quality, continuing care for people who have long term mental health problems.

50

THE COMMERCIAL PROPERTY BUYING COMPANY LIMITED

51



Founded in 1976 by Edward Kelly, the company commenced trading under the name of Easilift Material Handling. In 1993 the company merged with the Netherlands based Loading Systems group of companies, with the emergence of Easilift Loading Systems Limited.

58

CAYGILL HOLDINGS LIMITED

59



Hartshorne Group is today, one of the leading commercial vehicle distributors for the West Midlands, East Midlands, Shropshire and Staffordshire. The company was first established in 1968 and currently has nine depots all fully equipped to meet commercial vehicle needs. They provide full parts & service facilities for Volvo trucks & buses, as well as new and used sales.

60



Starting in 1968 in the small West Yorkshire mill town of Dewsbury, HSL have been handcrafting beautiful chairs, sofas and beds right here in West Yorkshire for over 50 years.

KIRKLEES TOP 100 - THE LIST

60

**JAMES
ROBINSON
GROUP LTD**

62



Incorporated in 1955, National Floorcoverings produces a wide variety of products from fibre bonded carpets for the education market, tufted carpet and tiles for the commercial sector to specialised indoor and outdoor sports surfaces, the National Floorcoverings group has expertise in all aspects of flooring.

63



Founded in 1935, Kautex is the leading manufacturer of blow moulded plastic parts. With more than 30 facilities in 14 countries, Kautex are one of the 100 largest automotive suppliers in the world in terms of sales volume. Well-positioned as the partner of choice for customers, they develop and produce blow-molded fuel systems, selective catalytic reduction systems, clear vision systems, engine camshafts, and plastic industrial packaging solutions.

72



Located in the heart of Yorkshire's textile industry, WoolsUK have been designers and manufacturers of textile fabrics since 1996. WoolsUK fabrics are used in office seating, public buildings and concert halls. Sales are exported for distribution within the EU and beyond. WoolsUK operates its own Warping, Weaving, Mending and Final Inspection with a state-of-the-art Dyeing and Finishing facility and the ability to manufacture its own yarns using novel and advanced production techniques. In 2022, expansion plans include the introduction of their own worsted yarn spinning facility.

72



XL Joinery Limited have provided quality doors and associated joinery, for over 20 years, to the most prestigious names in the DIY sector and to Builders Merchants, Timber Merchants and Independent Door Retailers across the UK. They are focused on innovation and our range of Hardwood, Oak & Pine Doors offers its customers the most comprehensive range of wooden doors available in the UK.

64

**ACKWORTH
SERVICE
STATION LTD**

65



Chemfix was created in 1991 as the business venture of a Kent-based entrepreneur. Allied with a successful Yorkshire based manufacturer of chemical resins, Chemfix entered the new and growing Industry of Chemical Anchoring. Chemfix is a company that specialises in the development and manufacture of Chemical Anchoring, repair solutions and anchoring products for the industrial, construction, and DIY sectors. Chemfix manufactures for many global brands and household names.

66



Formed in 1988 and based in Meltham, in the heart of the West Yorkshire Pennines, ABG has developed a reputation for developing quality geosynthetics, geotextiles, geocell and geogrid solutions and delivering outstanding customer service. ABG technical support is backed up by their team of in-house Chartered Civil Engineers. Their service covers full design provision, design validation, feasibility studies, and advice on meeting regulatory requirements.

74



The Britto Healthcare Group was founded in 2014. Ward Green Lodge Care Home is a modern purpose-built home for older people providing residential care and specialist dementia care. The care home located in Barnsley.

75



Lesjöfors produce an extensive range of springs for the European Car and Light Commercial Vehicle market, offering high-quality products, professional service, and excellent availability. Lesjöfors have spent over 160 years manufacturing springs, and today produce the world's largest range of coil springs for the automotive aftermarket. They are a European market leader in the suspension coil spring free aftermarket.

76



Founded in 1971, Ferno (UK) Limited have created a global range of products unrivalled in quality and design and is a world leading innovator, manufacturer and supplier of medical equipment to Emergency Medical Services, Fire & Rescue Services, Hospitals, Funeral & Mortuary, Industrial, Aviation, Military sectors and other major industries. The company employs over 50 staff at its facility in Cleckheaton and supplies its products into the UK, Ireland and Export through the Ferno Distributor network.

67



Established in 1986, ARROW is the leading independent UK based manufacturer, supplier and installer of specialist doors and services for industrial, retail and commercial applications.

68

**AY & Y. PATEL
(DEWSBURY)
LIMITED**

69



Master cabinet maker J.T. Ellis established the company in 1891 to make high-quality bespoke furniture, manufacturing baptism fonts and church furniture. Ellis is a 200-strong team of creative, passionate and skilled people, providing designed interior solutions for kitchen, bedroom, bathroom and loose furniture projects. Ellis use classic cabinet making techniques, high quality materials, skilled people, and modern machinery. Based in West Yorkshire, they have teams in place to manage projects from design consultation through to installation and after-care, including everything in-between, and they cover the entire UK.

76



The story of Hultafors started in 1883 when a young engineer, Karl-Hilmer Johansson Kollén, invented a measuring device that would facilitate Sweden's conversion to the metric system. Hultafors is a leading international brand within state-of-the-art hand tools designed for construction and industry. It all started more than 130 years ago with the innovation of the folding rule. Today they offer a wide selection of reliable hand tools for measuring & marking, chopping & striking, knives, and pry & wrecking bars.

78



Founded by Jimmy Dickinson of Longley Farm in 1996, Holme Styes Holdings Ltd was created to take the process of freezing dairy products overseas. Holme Styes Holdings has customers worldwide from Guyana to Japan. Ice cream in either country could have been made with ingredients produced by the company.

69



Polyseam has been independently manufacturing first class brands for the majority of the world's leading suppliers since 1993. Specialising in the development of professional sealants, adhesives, fillers and firestopping products for almost any substrate or application, they use their trade expertise to provide innovative products for the industry. Their comprehensive manufacturing experience and capabilities, matched with dedicated research and development investment, has positioned their products alongside other global market leaders.

71

BROOKFIELD PROPERTY (HOLDINGS) LTD

The principal activity of the group is a retailer of fuel and other household goods with convenience stores including Subway outlets, bakeries and veleting. The group operates a portfolio of sites in the north of England. As part of its growth strategy, it seeks to offer quality products with excellent service at all of its sites. To achieve this the group has partnered up with major brands such as BP, Shell, Nisa, and Coop for the convenience stores. During the financial year the business was affected by a fall in fuel sales volumes as a result of the global pandemic.

79



Formed in 1969, Newsmith Stainless Limited has remained a family-owned business, developing its identity as one of the world's leading manufacturers of an extensive and versatile range of industrial washing, drying, handling, conveying and auxiliary equipment.

80



Founded in 1992 in Morley, Leeds, Major Recruitment Limited provide jobs for people and consultancy solutions across multiple sectors using teams of specialist recruiters who know your sector inside out. Their business is split up into divisions, each with their own practices, procedures and approach - these are designed for the industry they serve. They are independently owned and have grown organically, meaning each location is integrated into its local region. This allows them to provide expertise in each specific market and geographical location.

KIRKLEES TOP 100 - THE LIST

81



Continental is the UK's leading manufacturer of equipment for gymnastics, trampolining, sports halls, physical education and changing rooms. Formed in 1964, they employ some 100 people in the design, manufacture, installation and maintenance of products for gymnastics, trampolining (including trampoline parks), sports halls, physical education, fitness & strength, indoor sports, outdoor sports, and changing rooms. We have successfully designed, manufactured and installed a large number of sports halls and gymnasia in the UK and overseas and have developed a wealth of knowledge and expertise in the subject.

81



Established in 1983, Oakwood is one of the UK's leading kitchen specialists at the forefront of design, manufacture, innovation and installations, working alongside clients on a full project management basis, from concept design through to completed installation. They are also ideally positioned to offer their products on a supply only basis.

91



Arrow Self Drive, an independent family run business which began in Huddersfield in 1988, is the largest independently owned car, van, minibus and truck rental company in Yorkshire with over 2,000 vehicles on fleet. They offer self drive hire from one day up to five years.

92

**TC WORLDWIDE
IMPORTS LTD**

93



Established in 1946 as an independent family run business, HOYER is a global leader in providing specialist bulk logistics for the chemical, petroleum, food and gas industries. Their UK operation commenced in 1974 and now employs 1,300 people throughout the country and globally they employ over 6,000 people in over 115 countries, turning over €1.2bn.

83



Established in 2003 Specialist Glass Products Ltd design and supply flat, curved, annealed, toughened, laminated and double-glazed glass to companies of all sizes.

84



More than 150 years since the company was founded to service the engineering needs of Yorkshire, part of the British industrial heartland, the Broadbent team comprises around 140 people with a vast wealth of skills, knowledge, experience and insight. Broadbent's expertise covers all major disciplines including process engineering, mechanical and electrical design, industrial controls and production engineering.

85

**IUKH GNT
LIMITED**

94



Fired Up was established in Huddersfield in 1998 as a small manufacturer of fires and fireplaces. Over the past 18 years they have grown organically and through acquisition to be a global employer, operating businesses in the UK, USA, Hong Kong and China. They operate three product brands; Adam, Aurora and Corby and across two industries; domestic heating and international hospitality and have factories in both China and the UK.

95



The Smith family founded Shepley Spring in 1996 after previously operating as a textile business. After discovering that the water supply from the textile business was extremely high quality, a new business was born. More than 20 years after their first bottle was produced, Shepley remains a family owned company nestled in the heart of the beautiful Yorkshire Village of Shepley, Huddersfield.

86



Incorporated in 1945, Drake Extrusion Ltd. manufactures coloured polypropylene fibres. The Company provides its products for such uses as floor coverings, industrial & filtration, home furnishings, concrete, and paper & soil reinforcement. Drake Extrusion operates in Bradford and Huddersfield. With a focus on researching new products and technologies, IFG's mission is not only to continually enhance the performance characteristics of its fibres, but to bring forward a new era of more environmental and sustainable performance fibre solutions.

87



Founded in 1989, Caterers Choice is a leading importer and trader of canned goods and ambient products for the UK foodservice, manufacturing and retail sectors. Their head office, Parkdale House, which includes their technical and test kitchen facility, is in Huddersfield.

88



Founded in 2006, Talk Direct (Leeds) Ltd is an O2 Franchise operating a Call Centre and 16 successful stores across Yorkshire, Nottinghamshire and the North East of England. Now turning over c£25m with c200 FTE's across various portfolios of businesses.

96



Calder Group (Dewsbury) Ltd are a family-run British supplier of woollen spun yarn for luxury quality contract and domestic floor covering. Their strengths are innovation, tradition and achievement, with a history of supplying yarn for bespoke products to international niche market clients.

97

**EASTWOOD GROUP
(HUDDERSFIELD)
LIMITED**

98



Established in 1998, Dura Beds are one of the largest bed manufacturing companies employing over 165 people located in the heart of the bed manufacturing industry in West Yorkshire. Since inception they have grown quickly and are now the second largest independent manufacturer of beds and mattresses in the UK making over 4,500 mattresses and 2500 divan beds per week. As well as serving the UK market they have recently started exporting to Spain, Portugal, and Denmark.

89



Extract Technology was founded in 1981 and are a leading worldwide supplier of containment and aseptic systems for the pharmaceutical, healthcare, biotech and chemical markets. Even within the early years the business established a prestigious international client portfolio based on a reputation for excellence. Over the following years they have been at the forefront of many significant developments and have striven to maintain their position as one of the leading containment and aseptic manufacturers in the world.

90

**TURTON GROUP
TRADING
LIMITED**

99



Prism Medical UK have over 30 years of experience in designing, developing, manufacturing, providing and installing bespoke mobility and care solutions. They are providers of specialist moving, handling and bathing equipment for elderly, disabled and mobility disadvantaged clients in a range of care environments, from community care to schools, hospitals and care homes.

100



Hystat was established in Huddersfield in 1976 to service the market in heavy duty Hydraulic Cylinders, Accumulators, Rotary Actuators, Rotary Distributors and Pressure Vessels. In 1982 the company moved to its current site at Spa Fields Industrial Estate, Slaithwaite, Huddersfield. The premises have been extended three times and is now over ten times larger than the original building within excess of 50,000 sq ft of production facilities at its disposal to supply industries including: Steel & Aluminium Production, Marine, Offshore, Subsea, Shipboard, Industrial, Power Generation, Minerals & Mining, Nuclear, and Railway.

Information about companies listed has been sourced in good faith from public sources including company websites and the Kirklees Top 100. Companies partners assume no responsibility for any errors or omissions in the contents of this brochure.



KIRKLEES TOP 100

COMPANIES 2022/23