

KIRKLEES

TOP

100

COMPANIES 2023/24



HM Government

HELP TO GROW

MANAGEMENT COURSE

Do you want to boost your business' performance, resilience, and long-term growth?

“The Help to Grow Management programme has been incredible for my personal development. It's also helped me understand how to engage our staff and make sure that they understand what the business is trying to do as a whole.”



Thomas Burwell
Head of Sales and Operations
at BOSS Training Limited

Over 12 weeks you will:

- Develop a bespoke business growth plan
- Get 1:1 support from a business mentor
- Learn from peers and network with other SMEs



Scan to learn more

For further information please email
helptogrow@hud.ac.uk

90%

Government
funded



**HUDDERSFIELD
BUSINESS SCHOOL** enriching lives
enhancing organisations
engaging communities

INSIDE



Methodology.....	4
Awards.....	5
Innovation Spotlight.....	10
Top 10.....	12
Significant Companies..	20
Talent Group.....	22
Significant Organisations.....	23
Top 100.....	24
Charities.....	45

GET IN TOUCH:

e-mail:
Kirkleestop100@hud.ac.uk
website: Kirklees100.org
Twitter: @KirkleesTop100
LinkedIn:
<https://www.linkedin.com/company/kirklees-top-100/>

Our fourth year celebrating Kirklees TOP 100 COMPANIES

We are delighted to publish the fourth edition of Kirklees Top 100 Companies, showcasing the top businesses and celebrating their contribution to our economy. Congratulations to the Top 100 who have emerged this year, an amalgamation of new and established firms reflecting the changing mix of fortunes following the extreme events of the pandemic, war in Ukraine and the subsequent energy crisis. There is strong representation from textiles and precision engineering on the list, core industries at the heart of the Kirklees economy, and this year we have also seen construction companies doing very well. There are 11 new entries in this year's list and 4 new entries in the Top Ten. Unsurprisingly, recent world events and their impacts on our economy have led to changing growth patterns which have disrupted the top of the list with significant movements amongst our major players. The list has been produced by Huddersfield Business School using published accounts data from the FAME BVD database, on five criteria related to financial performance, as explained by Professor Jill Johnes in the methodology article overleaf. We have a new Innovation Spotlight that showcases several dynamic firms with innovative approaches and products. We share insights from the region's HR directors who meet regularly to discuss best practice in recruitment, retention and professional

development of employees. Last year, we launched a well-received Careers Edition, and plan to publish a new one in 2023, to inspire young people with the vast array of exciting career opportunities in the Kirklees area. This year, we published a special Focus on Kirklees SMEs edition that recognises the significant contribution that small and medium sized enterprises make to our business community, accounting for over 99% of all firms. We'd like to thank our sponsors for their generous support in backing the Kirklees Top 100 Companies initiative, including Huddersfield Town FC, Huddersfield Giants, Langricks Accountants and Howarths-UK. We also have a new media partner and would like to extend a warm welcome to the Huddersfield Hub. We now have a dedicated website kirklees100.org where the Top 100 brochures can be downloaded, plus strong followings on Twitter @KirkleesTop100 and LinkedIn with over 1,000 members where we regularly share positive news stories of Kirklees Top 100 Companies - please join in. All the partners, the University of Huddersfield, Kirklees Council, Huddersfield Hub and 3M Buckley Innovation Centre (3M BIC), would like to express our thanks for all your support towards the Kirklees Top 100 Companies as a key feature in the business community, showcasing Kirklees as a destination for inward investment, business growth and talent.

Bob Cryan

**Professor Bob Cryan CBE DL
CMgr CCMi FEng
Vice-Chancellor & Chief Executive,
University of Huddersfield**

Sue Cooke

**Sue Cooke
Chief Executive
3M Buckley Innovation Centre**

Cathy Scott

**Cllr Cathy Scott
Leader, Kirklees Council**

Martin Shaw

**Martin Shaw
Huddersfield Hub**

Please note: inclusion in the Kirklees Top 100 Companies listing is based on objective criteria using company accounts published in the FAME BVD database prior to July 2023 and does not imply the endorsement of the partner organisations listed above.

The Kirklees Top 100 2023

HOW THE LIST WAS COMPILED

Background

The Kirklees Top 100 was compiled using as its source the FAME BVD database that contains a variety of information on more than 11 million companies in the UK and Ireland. The information in the database includes financial data, information on directors, and company structure including shareholders, subsidiaries and branches, and industry descriptions and SIC codes; much of the information derives from accounts and documents filed at Companies House (in the UK). The FAME BVD database is the only source used for the listing.

Strict parameters were used to derive the set of companies from which the Top 100 were ultimately drawn. The first parameter concerned the geographical location of companies in the Kirklees Top

100. The boundary was determined strictly by Kirklees postcode. Thus, we selected from the FAME BVD database all active companies with a registered office address within the Kirklees region defined as having a Kirklees postcode. Huddersfield Business School researchers downloaded the relevant data on July 3rd 2023 and any data available in the FAME BVD database after this date was not included in this particular edition of the Top 100 list. This year, in order to ensure a Kirklees focus, we added a further check: any company whose website presents as its only contact an address outside of Kirklees was removed even though their registered office was recorded in FAME as in Kirklees. This affected only a very small number of companies.

ECONOMIC CONTEXT

Companies continue to face external challenges. While the restrictions of the Covid-19 pandemic are a thing of the past, the lingering impact of the pandemic, as well as Brexit, continue to challenge businesses. More recently there are new challenges to add to the old ones: the war in Ukraine, the impact on energy and grain, and consequent inflationary pressures. In terms of this list, it should be remembered that each company's data is a specific snapshot (indicated by the date in the "Accounts Date" column) and so the extent of the impact of precise external factors on businesses in this list will vary

by company. Companies which were thriving in the pandemic such as providers of online shopping, computers, and health-related products are now seeing more mixed fortunes; petrol, garage and vehicle services have seen a boost in position, pharmaceuticals are still performing well, and these sit alongside an array of business areas such as card publishing, financial services, purveying of food and drink, paint production and civil and precision engineering – and these are just in the Top 10! Kirklees continues to have a vibrant and diverse business economy with a wide range of services and manufacturers.



Professor Jill Johnes, Director of External Engagement, Huddersfield Business School

METHODOLOGY

The Kirklees Top 100 uses the same methodological approach as in our previous editions. The ranking is derived from the following indicators: staff head count (i.e. number of employees); turnover; growth in turnover between the latest and previous years; profit before tax; and shareholders' funds.

Each of these indicators is ranked (best- to lowest-performing), and then these rankings are summed. The final position is determined by ranking the sum of ranks. In effect, each of the five metrics carries equal weight in determining the final ranking. The period over which the ranking applies is determined by the latest information held in FAME BVD and filed by each company in the Kirklees list. Any subsidiaries of larger companies included in the list were removed allowing us to focus on ultimate ownership, so long (of course) as the registered office was in the defined Kirklees area. Companies with turnover less than £1000 or with non-numeric data were removed from the data set. No businesses were offered the option of being included (or not).

Limitations

This list does not claim to indicate each business's economic importance to the Kirklees geographical area. It is based on five specific metrics which are deemed to be indicators of success. All metrics contribute equally to the final ranking.

The list can therefore be seen as a means of showcasing and celebrating business activity in the Kirklees region. Unfortunately, not all companies' complete set of data are included in FAME BVD, and so businesses which might expect to be in the list are not for that reason. Kirklees also hosts important businesses which do not have a registered primary office in the region. These businesses, along with major public sector organisations, are showcased separately in this publication and are not in any ranked order.

HIGHEST CLIMBER

sponsored by **LANGRICKS**
Contract Assessment & Health Management

Calder Group (Dewsbury) Limited

Calder Group is a specialist woollen carpet, yarn spinning and dyeing company based in Dewsbury and has risen from number 96 in last year's Kirklees Top 100 Companies to 29 this year. It has three businesses, all on one site at Dewsbury Mills on Thornhill Road – Calder Textiles for yarn spinning, Calder Dyeing and Calderdale Carpets which manufactures wool-rich Axminster carpet for the UK pub, hotel and property lettings markets. Major customers have included the Headingley Stadium complex in

Leeds which includes Headingley Cricket Ground and Headingley Rugby Stadium, The Grand Hotel in Tynemouth in the North East and the five star Glasshouse in Edinburgh. This family-run company was founded in 1966 as a small yarn processing business but has evolved and expanded considerably over the last 50 years and now has more than 200 staff.

It has five in-house designers who can make bespoke concepts for customers, pushing creative boundaries from vision to finished product. The dye lab is also on site and its colour spectrophotometer can produce the most complex colours in eye-catching patterns.

Calder Group puts a major focus on being sustainable, sourcing most of its raw materials within five miles of Dewsbury. More than £2m is being invested in new buildings and pressure dyeing equipment which will use less dyestuff and water while also reducing the overall cost of dyeing. Changes to its effluent treatment plant will eliminate discharge into the River Calder and allow the mill to



The Calder Group site in Dewsbury

reuse approximately 75% of the water in the dyeing process. The company is investing £300,000 in solar panels in September 2023. Around £2m will be invested in a new Axminster loom for the summer of 2024 which will be four times more productive than its current looms. Managing director Greg Bedford said: "Our carpet manufacturing is now more productive compared with before Covid and this is improving our profitability. We remain busy and all departments are at full capacity although it remains difficult to recruit quality production personnel."



Calder Group Managing Director Greg Bedford

HIGHEST PLACED SME

sponsored by **Howarths**

AY & Y.Patel (Dewsbury) Limited

The company is at number 10 in the Kirklees Top 100 Companies and runs petrol stations in West Yorkshire, investing £2m into two of them in 2022.

This independent forecourt operator is based the Three Nuns Service Station on Huddersfield Road in Mirfield which it redeveloped in 2019. Last year it carried out a £1.5m transformation of its Shell station on Leeds Road in Bradford to include a modern Spar shop with a Bombay Bites Indian takeaway also due to open on the same site. The company has also invested £500,000 redeveloping a station on Roseville Road in Leeds. AY & Y.Patel now has four forecourts with Preston-based James Hall & Co. Ltd which is Spar UK's primary wholesaler and distributor for the north of

England. Shaheena Patel, Head of Operations at AY & Y.Patel Dewsbury Ltd, said: "The development of the sites has been a lot of hard work but they have been worth it and we are very impressed with the finishing look and feel."

"Both service stations will prove excellent options for customers in Bradford and Leeds and already we are seeing some strong sales results and have had brilliant feedback from customers."

"Our association with James Hall & Co Ltd is fantastic. We have a hand in hand relationship and we really feel like we are valued by the team there who work together with us to support our business ambitions. "After the success of our reopened site in Mirfield four years ago we're confident that similar results will be achieved in Bradford and Leeds and we have exciting plans in place



The newly revamped AY and Y.Patel petrol station on Leeds Road in Bradford

for two further sites with James Hall & Co. Ltd in due course." AY & Y.Patel is run by five directors, Ahmed Yusuf Patel, Yakub Yusuf Patel, Yunus Yusuf Patel, Ashif Ahmed Patel and Mohamed Hanif Ahmed Patel. The company was first incorporated in January 1987 and was originally based in Savile Town in Dewsbury.

HIGHEST NEW ENTRANT

sponsored by



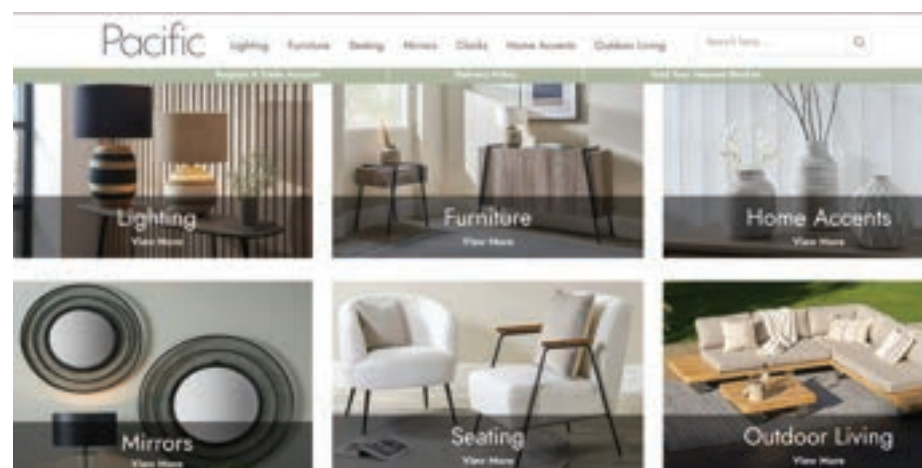
Stafford Mills Holdings Ltd

The company has been operating in Yorkshire for 50 years and is known for its tradename Pacific Lifestyle.

It's based at a purpose-built location with offices, showrooms and warehousing in Milnsbridge, Huddersfield, and both designs and imports home furniture and lighting for trade customers. Over the years it has built up strong working relationships with trusted suppliers which means it can mix good quality with competitive pricing. The products range from outdoor furniture, parasols, lighting and fire pits to interior furniture, accent lighting and home décor. This includes chairs, pouffes, dining tables, wall art, clocks, mirrors, dressers, sideboards, sofas, rugs, vases, statues, ceiling lamps, table lamps and outdoor lighting. The Pacific Lifestyle pledge is that: "We source the best products globally while always ensuring the factories we work with are true to their artisan

history while ensuring ethical and environmental requirements. "Our buyers and designers work tirelessly with our suppliers to create innovative and aspirational products to inspire our customers who can be sure in the knowledge they are

buying quality products at commercial prices." In the UK it sells its products from Aberdeen in the north of Scotland to Cornwall at specialist lighting shops, furniture stores and garden centres - in well over 1,000 outlets.



We Look After Eyes At Work.

Looking after the health of your employees' eyes is important. It shows your team that you care about them, it reduces absenteeism, good eyesight is definitely an advantage at work and...

you have to provide it by law. Our unique service makes eyecare simple – ensuring a top quality service, minimising downtime and reducing all that extra admin and paperwork.

It's easy. Create your own Valli co-optic account and start purchasing eye care vouchers now.

See how Valli Co-optic can benefit you at www.valliopticians.co.uk



VALLI CO—OPTIC



Scan this
QR Code
to find out
more



NOTHING BEATS BEING THERE

- PARTNERSHIPS
- SPONSORSHIPS
- ADVERTISEMENT
- HOSPITALITY
- NETWORKING EVENTS

TO ENQUIRE HOW YOU CAN GET INVOLVED
WITH THE HUDDERSFIELD GIANTS PLEASE
CONTACT COMMERCIAL@GIANTSRL.COM OR
CALL 01484 484 145.

GIANTSRL.COM



3M BUCKLEY
INNOVATION
CENTRE

University of
HUDDERSFIELD
Inspiring global professionals

MORE THAN OFFICE SPACE

Enabling innovation and enterprise

- ✓ Office and lab space
- ✓ Meeting and event space
- ✓ Membership, flexible working and company registration
- ✓ Product development expertise

We'd love to hear from you. Get in touch to find out more.
01484 505601 | info@3mbic.com | 3mbic.com

INNOVATE . CONNECT . GROW

Unlocking the Power of AI

Artificial Intelligence (AI) has been a transformative force across various industries, and this year has seen a remarkable rise in its adoption. Learn why businesses should embrace this powerful technology.



Emily Raleigh, Marketing and Communications Manager, 3M BIC

Al has undoubtedly emerged as the biggest trend this year, prompted by the disruptive arrival of ChatGPT and its rivals and revolutionising the way businesses operate and interact with customers.

The unparalleled language understanding and generation capabilities of AI applications herald a world of opportunities for enhanced customer engagement, improved productivity and personalised experiences.

Whilst there is still reluctance to adopt AI, those that do will establish themselves as industry leaders and pioneers in innovation.

Evolution of AI

Simon Milner, a successful entrepreneur and software engineer resident based at the 3M BIC, has been using AI for several years. Originally from Huddersfield, he spent 20+ years in Silicon Valley where he witnessed the evolution of artificial intelligence.

"AI has been around for decades but in recent years has evolved as a driving force that will transform how we live and work.

"It won't replace humans as some predict. Instead, AI has been designed to amplify human skills and abilities to enable businesses to become more competitive and more productive," Simon explains.

"Across Silicon Valley, all employees have a subscription to a GPT platform, which demonstrates AI's worth. What smaller businesses don't realise is that they have access to the same tools as these larger, multinational

companies and can reap the same benefits.

"And they don't need be technically minded or a computer engineer to use it. AI platforms use natural language so it's just like speaking to another human being. The key is mastering how best to explain what you are asking it to do to maximise the benefits."

Recent statistics show that AI adoption has the potential to increase productivity on average by 30% in companies. "Imagine, a more productive workforce could lead to four-day weeks, or, depending on which way you look at it, a three-day weekend. The week is shorter but the impact is greater," Simon adds.

"As with any technology, there are lots of unknowns and security risks with AI as it continues to evolve, but businesses shouldn't ignore it. The time to embrace AI is now as it promises to shape the future of business in transformative and exciting ways."

Benefits of AI for business

AI-powered language models like ChatGPT have made substantial progress in understanding human language, enabling them to process complex queries and provide accurate responses.

Natural language processing capabilities allow AI platforms to engage with customers in a conversational manner, making interactions more human-like and relatable.

AI platforms can generate content, such as blog posts, social media updates, or even code snippets,

streamlining content creation and saving valuable time and resources. Emily Raleigh, Marketing and Communications Manager at the 3M BIC, said, "AI has transformed how we generate content at the 3M BIC. Being able to quickly turn around content by creating first drafts using AI that we can edit in our own style and tone has been a gamechanger as a small marketing team. We're also exploring other ways we can maximise AI potential across the wider business." Organisations can leverage AI to tailor recommendations, marketing messages and product offerings to individual customer needs.

Whether it's managing an influx of customer queries or processing large volumes of data, AI-driven solutions, like ChatGPT can also adapt to changing business requirements. Businesses can also incorporate AI into existing systems and platforms, such as websites, mobile apps and messaging services, without undergoing massive infrastructure changes or investing in extensive training.

Prof Simon Parkinson, Professor of Cyber Security at the University of Huddersfield concludes, "Tech giants are in an 'AI race' to produce the most powerful AI tools that can be used in challenging applications.

"Employees will increasingly integrate AI into their daily lives, something that we are already seeing in the education sector with the use of ChatGPT among students.

"Collaboration between humans and AI systems in the workplace is inevitable, and businesses adopting them early have the potential to gain a competitive advantage."

**The creation of this article was assisted by ChatGPT.*



3M Buckley Innovation Centre

Innovation spotlight

Our panel's choice showcasing some of the most innovative engineering companies in Kirklees.

ACCU

Supplying precision engineering components to over 50% of the world's top 100 manufacturers.

Accu sells 500,000 precision components in over 125 countries, from tiny screws in children's prosthetic limbs to precision bolts within fusion reactors that promise unlimited clean energy. Accu supports global innovation across several industries, including manufacturing, electrical engineering and electronics, prosthesis, robotics and medical. It has spent years establishing a global supply chain and network to provide bespoke solutions to engineers across the world.

The company is making big strides to reduce its carbon impact with ambitions to become a net zero organisation by 2030. Innovations include new manufacturing processes, operating with digital, paper-free systems and introducing on-site energy saving protocols.

To accommodate expansion, Accu recently invested over £1million on a new

state-of-the-art head office and 45,000 sq ft distribution centre at the former Brooks Motors site in Brockholes. The

new premises will create up to 200 new jobs as it aims to grow its turnover to £40 million by 2026.



HOLTEX INNOVATIONS GROUP



Finding solutions to impossible problems and bringing ideas to life.

Established in 2014, Holtex specialises in problem-solving engineering, boasting a highly experienced, multi-skilled team, all trained in-house across a wide range of machinery.

Its experts provide engineering design for both advanced machining strategies and machine tooling.

Working across a range of industries including automotive, oil and gas, medical, powertrain, aerospace, food and drink and agriculture, Holtex enables businesses to save money and improve carbon footprints through cost-effective solutions that reduce the need to invest in new machinery and equipment. Innovation projects at Holtex include, developing its own carbon neutral manufacturing plant, introducing zero emissions transport supported by its own electropolishing, as well as developing algae photobioreactors and algal fertilisers, a CO2 fixation system and micro hydrogen fuel cells.

Holtex collaborates regularly with the School of Computing and Engineering at the University of Huddersfield and the 3M Buckley Innovation Centre.

ACTIFORM LTD

Pioneering bespoke modular buildings in a changing world.

With over 40 years' experience in the design, manufacture and construction of off-site engineered buildings, Actiform has forged a strong reputation and evolved as one of the largest privately owned manufacturers in its field in the UK.

Since 1979, the company has been innovating through the creation of a wide range of flexible and bespoke solutions to meet building needs, with particular focus around the health, education and commercial sectors.

Projects include modular community

diagnostic facilities, office cabins, wards and theatres, as well as clinical refurbishments and new buildings, created from its state-of-the-art manufacturing facilities based in Mirfield.

Reducing its carbon footprint has been a high priority in recent years, having invested in hybrid and electric vehicles, replacing all sodium lighting in its factory to LED, as well as switching all its gas heating with a wood burning heater fuelled by its timber offcuts. Actiform has a Collaborative Venture Fund (CVF) with University of Huddersfield and has recently worked

on projects with the School of Arts and Humanities and the Leeds City Region Supply Chain Programme.



WAYLAND ADDITIVE

Revolutionising metal AM processes using electron beam technology.

Boasting a combined 150+ years of industrial electron beam manufacturing expertise, Wayland Additive was born

from an established high precision engineering team in the semiconductor industry that discovered how electron beam technology could improve additive manufacturing (AM).



At the forefront of developing the most efficient and accurate AM metal processes, Wayland has been transferring the high value, mature technology from the semiconductor industry to the AM arena since 2015 to enhance application, material development and repeatability. Its revolutionary Calibur3 metal AM system features the NeuBeam metal AM process offering a significant advancement compared with traditional systems, paving the way for new possibilities and precise control in metal AM.

The Calibur3 can improve productivity with faster warm-up and shorter cool-down times by eliminating residual thermal stresses, simplified powder removal and reduced post-processing and energy consumption.

In 2022, it expanded its headquarters in Huddersfield, developing a dedicated production factory, as well as new premises specifically for research and development.

Wayland regularly collaborates with the School of Computing and Engineering at the University of Huddersfield.

SENTINI MARINE

Focusing on improving crew safety on board superyachts.

Operating since 2011, Sentini Marine was set up by a team with decades of commercial and yachting experience to provide bespoke technical operating manuals and familiarisation tools to both the commercial shipping world and private yachts.

Based at Aspley Wharf in Huddersfield, the company's aim is to raise the safety culture on yachts by increasing the quality of information onboard and the methods by which it is communicated, to help reduce accidents and incidents and save time and money in delays and repairs.

Sentini Marine's innovations include an app that tests crews' knowledge of their specific vessel safety information and procedures and a virtual reality crew training module.

The company recently used Kirklees Innovation Vouchers to introduce a new app which allows the crew to browse, revise and take tests based on the vessel's safety and technical manuals as well as monitoring and capturing performance. The app not only tests crew knowledge but provides immediate access to data such as digital manuals and reduces the need to physically access multiple manuals.



The top 10

1. ISAAC TIMMINS LTD (MYERS GROUP)



Myers Group, Barr Street, Huddersfield

We all know this company as the Myers Group but why is the parent company called Isaac Timmins Ltd?

And what link does Myers have to do with some of Huddersfield's greatest landmarks?

Well, it was originally founded as Isaac Timmins Ltd in 1929 when Hervey Myers bought housebuilding company Isaac Timmins and the Myers Group can trace its modern-day heritage back to 1959 when the Readymix Huddersfield concrete business was incorporated. The Readymix operation has since expanded into a regional business with four strategically located manufacturing plants.

Its concrete was used to build Emley Moor mast in 1969 and also the M62 motorway and the landmark Scammonden Dam bridge. Group companies also include Johnsons Wellfield quarries founded in 1854 and acquired by the Myers family in 1979. Johnsons Wellfield is Britain's leading supplier of natural hard Yorkstone and the only division in the group that sells nationwide. Its stone features on the imposing Creative Arts School at the University of Huddersfield.

Myers Building Supplies is a builders' merchant with 16 branches throughout Yorkshire. There are

also two Huddersfield focused specialist businesses - Myers Timber and Myers Skip Hire - and it also has a specialist kitchen department.

The Myers Group is now into its fourth generation run by co-directors, brother and sister James and Katie Berry, and employs 350 people across West Yorkshire. It invested more than £1m into its Huddersfield headquarters on Barr Street at Bradley Mills in 2020 and other branches have recently been renovated including Denby Dale and Penistone.

In 2022 Milnsbridge-based, family-run NIS Building Supplies became part of the Myers Group portfolio

and in 2023 Myers opened a branch in Boroughbridge, North Yorkshire. In the last few months Myers has installed 356 solar panels on its three buildings in Huddersfield to provide green energy and they hope they will generate around 131,000 kWh per annum with a CO2 reduction of 605 tonnes over the next 20 years.

The company has also invested in electric vehicles and worked hard to reduce waste and recycle more. Myers supports several charities including Kirkwood Hospice and the Yorkshire Air Ambulance with fundraising events in branches in 2021 and 2022 raising more than £2,100 for the air ambulance.



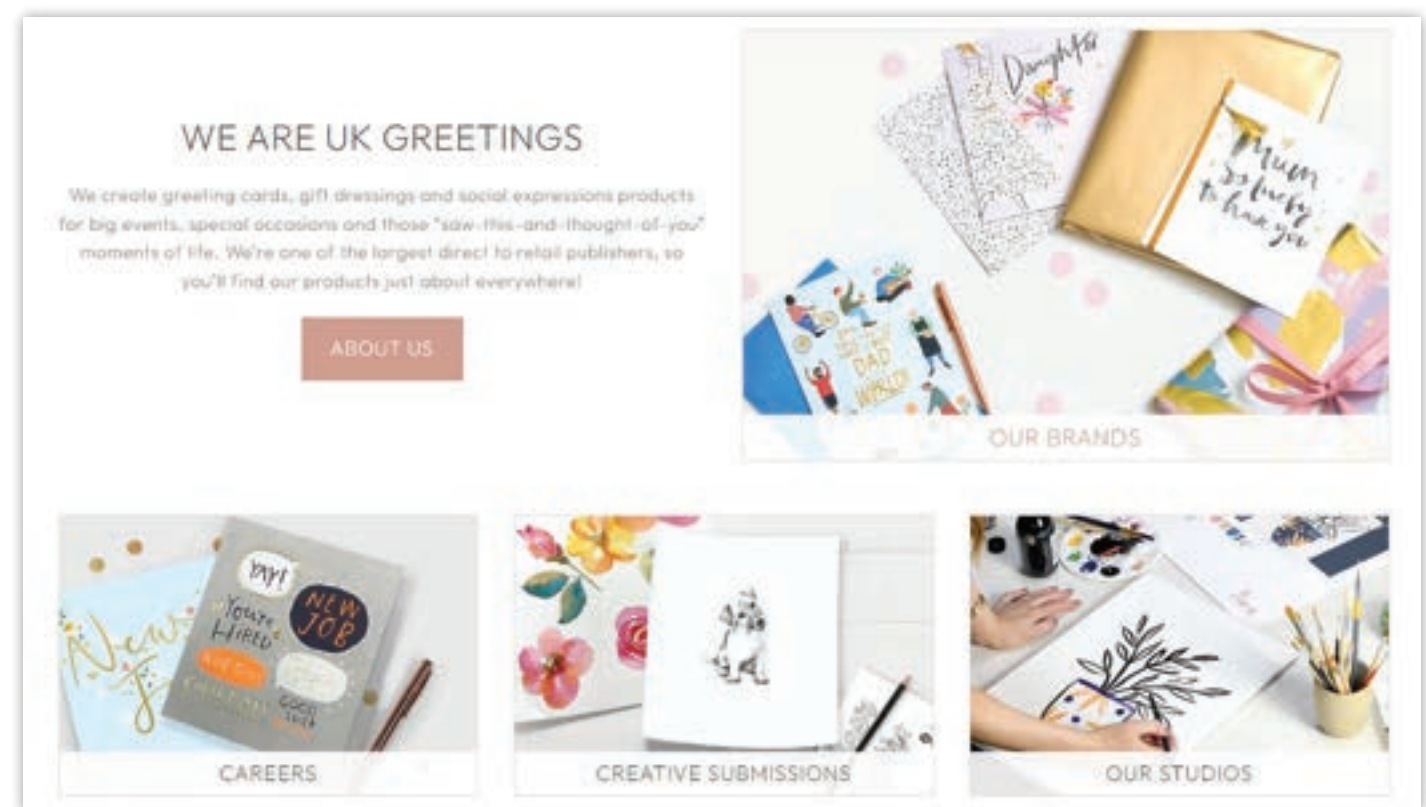
Katie Berry (Director) and James Berry (Managing Director) of Myers Group

2. UK GREETINGS LTD

The Head Office for UK Greetings is based at Mill Street East in Dewsbury but its story starts in the USA back in 1906 when young entrepreneur Jacob Sapirstein had an idea and \$50 in his pocket.

He began by selling penny postcards from a handcart on the streets of Cleveland, Ohio, and the company, American Greetings, is now a global leader in celebrations with worldwide sales of £2bn. In the 1980's it expanded into the UK buying three established card companies - Rust Craft, Celebration Arts Group and Andrew Valentine. The companies continued to grow and merged in the late 1980s to form Carlton Cards. More UK companies joined Carlton in the

late 1990s into the 2000s and so UK Greetings was formed as the holding company for American Greetings' interests in the UK. The UK portfolio became a who's who for famous brands including Hanson White, Carlton, Camden Graphics, Gibson, Special Editions and Collage. In March 2008 UK Greetings Ltd became the legal entity of all American Greetings' operations. Since 2021 UK Greetings has partnered with the World Land Trust to support its carbon balanced paper programme. UK Greetings works with major global brands such as Disney, Marvel and Star Wars with their eye-catching images on its cards. 2023 marks 15 years of one of the most iconic cute characters of UK Greetings - Boofle.



3. CONTINENTAL WINE AND FOOD LTD

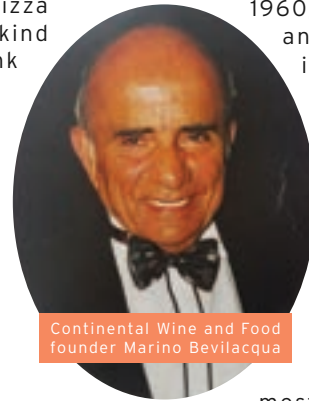
This Huddersfield company is one of the UK's leading wine and alcoholic drinks wholesalers and can produce 20 million litres of wine a year.

It also provides some amazing Italian food too with its food and drink products now numbering more than 2,000.

The business employs more than 140 people at its head office on Leeds Road and is a specialist in wine packaging from small bottles to wines in boxes and bulk supply. The company's Wine Development Manager and Master of Wine, Nicholas Tatham, leads an experienced team of Italian wine experts and buyers and CWF now represents more than 30 producers right across Italy from small, family-owned wineries to large, modern cooperatives.

CWF is the UK's largest producer of mulled wine and also imports specialist liqueurs and spirits. In the UK, CWF sells across the Midlands, the North and Scotland with depots in Huddersfield, Newcastle, Edinburgh and Glasgow serviced by a multi-temperature transport fleet of more than 30 vehicles.

CWF's food products feature pasta and rice including frozen pasta ready meals such as ravioli, tortellini and lasagne; pizza sauce and passata, any kind of toppings you can think of for pizzas; olive oils and balsamic vinegar; olives, gherkins, cured meats such as salami, pepperoni and even wild boar; Italian cheeses such as mascarpone and mozzarella; pesto, Italian breads, biscotti biscuits to drink with coffee, panettone cake and desserts such as tiramisu and traditional Italian ice-creams. Its large range of liqueurs include limoncello and amaretto. The company also exports across Europe, Asia and Africa. It's very environmentally aware, has 74% recycled glass in its green bottles and uses UK-based suppliers wherever it can for raw materials to reduce its carbon footprint. CWF was founded by Italian immigrant Marino Bevilacqua who went on to become one of Huddersfield's greatest



Continental Wine and Food founder Marino Bevilacqua

entrepreneurs.

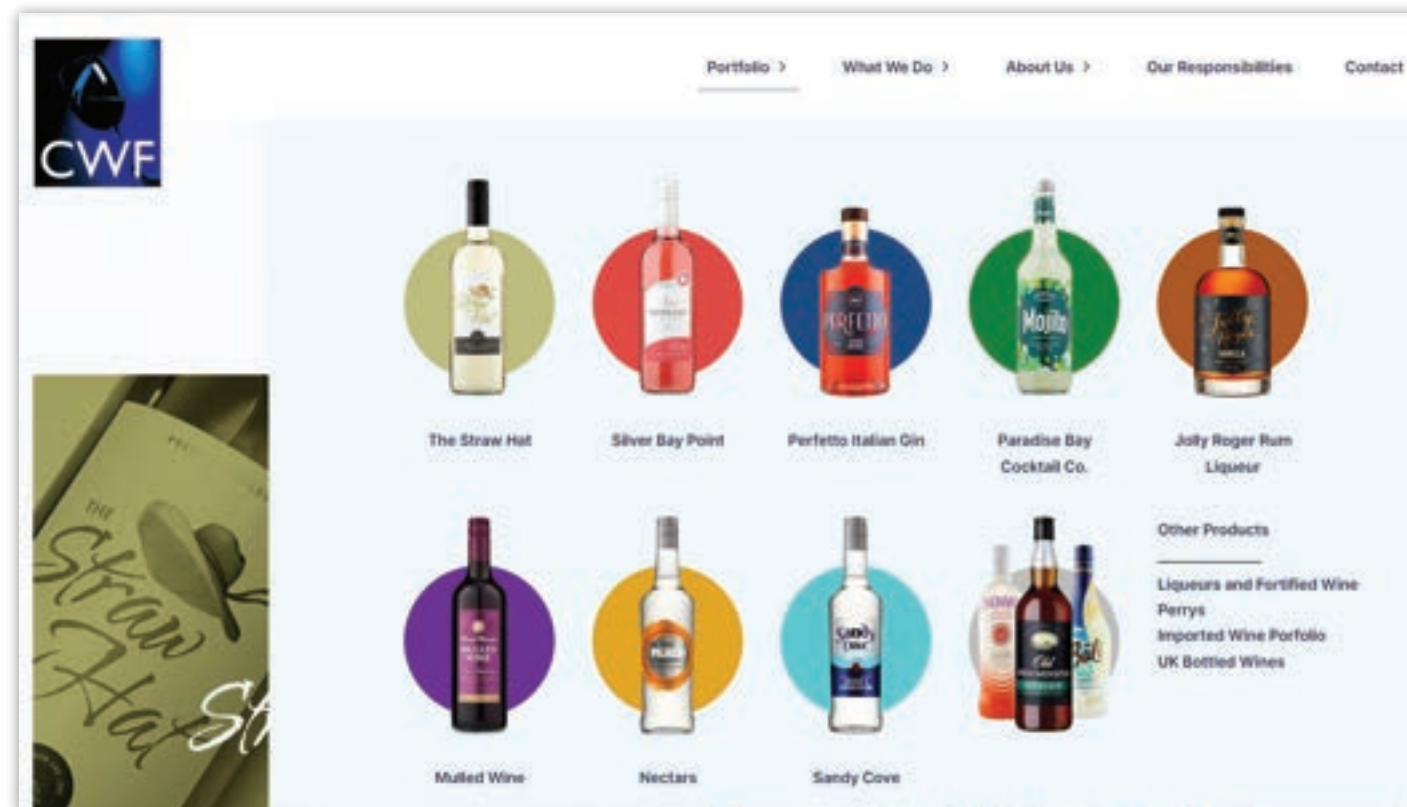
Mr Bevilacqua, who died in August 2017 aged 85, founded CWF in 1960, supplying delicatessens and restaurants with imported Italian fare.

After later selling the business to a conglomerate for several million pounds he used the proceeds to establish building company MB Construction, going on to create the Da Sandro Ristorante and Pizzeria - one of Huddersfield's most renowned restaurants

- and the Briar Court Hotel at Birchencliffe.

In typical entrepreneurial style Mr Bevilacqua bought back CWF for £1 when it was facing financial difficulties and it remains a family business.

As a property developer he built more than 500 houses in the Huddersfield area and 100 commercial premises which he rented out. His other business interests included classic cars and car dealerships.



4. DR REDDY'S LABORATORIES (EU) LTD



Dr Reddy's Laboratories is a pharmaceutical company with a major manufacturing site in Mirfield.

The company globally was set up by Indian-born scientist, philanthropist and entrepreneur Dr K Anji Reddy in 1984, powered by his passion to make medicines more affordable. It now has more than 24,000 employees worldwide and millions of patients in 66 countries have access to Dr Reddy's products. The company was established in the UK in 2002 and is committed to saving the NHS money with its range of prescription medicines that includes gastrointestinal, neurology, cardiovascular, pain

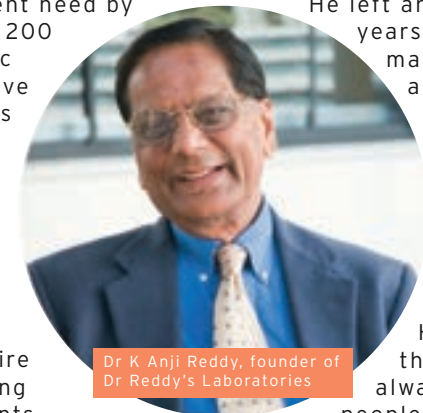
"This single event changed my life forever. I started dreaming of my own pharmaceutical company that would one day stand proud and tall."

management, dermatology, oncology and anti-infection. Its website states: "Many people throughout the world do not have access to good health because they can't afford expensive medicines. Our generic formulations business addresses this urgent need by offering more than 200 high-quality generic versions of expensive innovator medicines at a fraction of the cost in over 80 countries around the world. "We are able to make these medicines affordable because we manage the entire chain from producing the active ingredients to developing formulations to distributing them through our streamlined supply chain." Dr Reddy's UK head office is in Beverley, Yorkshire, and it has a product development centre in Cambridge. Dr Reddy, who died in 2013 aged 74, was born in India in 1939 and grew up watching his father make herbal pills and distribute them free of charge to those in need. This meant medicine was in his

blood, as was a sense of public service and after earning a doctorate in Chemical Engineering he worked for six years at the state-owned Indian Drugs and Pharmaceuticals Ltd which stirred his entrepreneurial ambitions.

He left and in the next few years set up bulk drug manufacturing ventures and established Dr Reddy's Laboratories in 1984. This was all driven by his belief that medicines had to be affordable and accessible at prices people in India could afford. He once said: "Since the beginning we have always dreamt big. For people of my generation

John F Kennedy was a hero. When his seemingly impossible mission of landing a man on the moon was actually happening I woke up from my sleep on July 20, 1969, to hear Neil Armstrong say on the radio: "That's one small step for man, one giant leap for mankind." This single event changed my life forever. I started dreaming of my own pharmaceutical company that would one day stand proud and tall."



Dr K Anji Reddy, founder of Dr Reddy's Laboratories

5. PPG ARCHITECTURAL COATINGS LTD

The PPG plant in north Kirklees is Europe's largest paint manufacturing complex.

PPG, which makes the famous Johnstone's paint brand, is based at a 65-acre site in Birstall where it has been since 1983. It employs more than 1,500 people across the UK and Ireland.

It's part of a global company manufacturing any kind of paint you can think of from car paint - two out of three cars made in Europe and North America use PPG paint technology - to industrial paint including coatings for drinks cans and paint for homes for the inside, outside, wood and metal. If anything can be painted, PPG has the product. Yet it didn't even start out as a paint company. It was founded in 1883 as Pittsburgh Plate Glass but retained the PPG moniker even though it diversified to become a paint manufacturer and supplier. It has 47,000 employees worldwide, operates in 70 countries, has 156 manufacturing centres and total yearly sales are around \$14 billion. PPG also has a very strong social conscience and one of its main community schemes is its Colourful

Communities programme which encourages its staff to volunteer their time and PPG products to brighten up their neighbourhoods.

In August 2023 more than 50 PPG employees spent five days repainting six classrooms and playground areas at St Patrick's Primary Academy primary school in Birstall. They also worked with a community arts group called We Belong Here, commissioning a mural that captured the importance of student well-being. Other projects completed by the Birstall staff include enhancing the Hollybank Trust residential home for people with profound disabilities in Mirfield, renovating playground equipment at Mirfield Memorial Recreation Garden and transforming a neglected courtyard at Fairfield School in Batley for pupils with complex needs into a peaceful sensory garden.

Probably the biggest project saw 100 PPG volunteers transform Batley Railway Station. The shop and café, as well as the front of the building, were painted by the volunteers while a mural depicting iconic venues in the town - including the famous

Frontier club and Batley Bulldogs' Mount Pleasant ground - was created in the subway. Another project saw 38 PPG volunteers and nine community volunteers refurbish Birstall Community Centre, putting in a new commercial kitchen and bathroom, modernising the windows and ceiling and giving the walls plenty of vibrant colour.

The colours there are especially suitable for people with visual impairments, the elderly and people suffering from dementia by painting walls, doors, frames and handrails in contrasting colours. Since 2015, PPG has completed more than 470 Colourful Communities projects, enhancing the lives of more than 8.2 million people in 50 countries.



PPG volunteers carried out a transformative makeover at St Patrick's Primary Academy, Birstall

6. FINTEL PLC

Well-known Huddersfield financial services company Fintel, run by Huddersfield Giants chairman Ken Davy, is the UK's leading financial and support services business. Fintel, based on St Andrews Road in Huddersfield, is also the parent company of the industry leading financial information, ratings and financial technology business, Defaqto.

Fintel is committed to simplifying and improving the complex world of financial services and provides high quality comprehensive compliance and business support to thousands of financial advisers throughout the UK.

Fintel employs 480 people and was founded by its chairman, Ken, in 2002. Ken, who is now a non-executive director at Fintel, is a hugely respected figure in both the financial services sector and the local community.

In addition to the many awards Fintel has received under Ken's leadership, he has personally been awarded several outstanding contributions to financial services

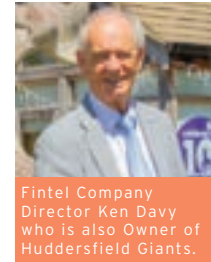
and lifetime achievement awards, as well as an Honorary Doctorate in Business Administration from The University of Huddersfield and an Honorary Fellowship of the Chartered Insurance Institute. He is also chairman of Huddersfield Giants rugby league team.

In 2022, Fintel was accredited by employment specialists Best Companies as an Outstanding Company to Work For and one of the 20 Best Companies to Work For in the UK financial services sector.



Fintel headquarters based on St Andrews Road in Huddersfield

Fintel joint chief executive Matt Timmins said: "Embracing employee feedback is a fundamental part of our culture as we focus on building an environment where everyone can thrive. Our people are our driving force and when they succeed so does the business."



Fintel Company Director Ken Davy who is also Owner of Huddersfield Giants.

7. CROSSROADS GROUP LTD

Crossroads Truck & Bus has been helping to keep businesses large and small on the road since 1968 by supplying and servicing Volvo commercial vehicles across Yorkshire and Lincolnshire.

It is based in Birstall and also has eight other locations in Yorkshire and Lincolnshire employing 350 people across the region, including 176 technicians and apprentices. The company sells new and

used trucks and also operates maintenance departments, offers service contracts, stocks parts and accessories and provides programmes to assist with fuel efficiency, driver training and safety.

In April 2022, Crossroads launched its 'Hauliers for Hunger' campaign in response to the cost-of-living crisis. Each depot is twinned with food banks supported by The Trussell Trust, a nationwide charity

that fights hunger across the UK. Crossroads donates £1 for every £1 that staff collect through fundraising events and customers

can also show their support by donating when they make use of two special demonstrator trucks which are decorated in Hauliers Against Hunger campaign livery. The Crossroads team has donated more than £100,000 in cash and food to the project so far. In 2021 and 2022, Crossroads made special one-off payments to its staff to help in the cost-of-living crisis. Crossroads Truck & Bus Managing Director Ian Middleton said: "We aim to be more than a dealer and regard our customers as partners and friends."



Crossroads Truck and Bus Managing Director Ian Middleton



Crossroads Truck & Bus Ltd employees donating £4,300 to Leeds South and East Food Bank

8. MABEY HIRE LTD

Mabey Hire is an award-winning hire company that also carries out major engineering projects and has been at the forefront of its industry for 60 years.

Based at Scout Hill in Dewsbury, it has a 70-strong engineering team among its 400 national workforce who have completed temporary works schemes for some of the most complex and largest construction and infrastructure projects in the UK.

Temporary works are needed at the early stage of huge construction projects such as propping for bridges while they are being built and the company worked on the Mersey Gateway bridge in Widnes, a multi-million pound scheme that took more than three years to build across the Mersey estuary and 80,000 vehicles now use it every day. It opened in October 2017 and provided relief from the huge traffic congestion in the area by forming part of a wider regeneration project and a new improved link road between north Cheshire and Merseyside.



Mabey Hire Ltd. Propping on the Mersey Gateway bridge in Widnes before the concrete was installed

Mabey provides a complete service from design, supply, installation and monitoring for planned, reactive and emergency projects and also has the UK's widest range of temporary works equipment for hire.

Safety is top of the agenda and Mabey has achieved the Royal Society for the Prevention of Accidents' President's award after

11 consecutive years getting the RoSPA Gold award. Chief Executive David Adams said: "We are committed to continually improving what we do to make sure our people work in a safe place, whether that's at a desk in our offices, at one of our 16 depots, out on site or on the road. Everyone home safe, every day - that's what we aim to achieve."

Celebrating 20
years of supporting
Kirklees businesses.



9. AY & Y.PATEL (DEWSBURY) LIMITED

This family company runs petrol stations in West Yorkshire and invested £2m

into two of them in 2022.
The business was originally set up in Savile Town in Dewsbury but

is now based at the Three Nuns Service Station on Huddersfield Road in Mirfield which it redeveloped in 2019. Last year it carried out a £1.5m transformation of its Shell station on Leeds Road in Bradford to include a modern Spar shop and also invested £500,000 redeveloping a station on Roseville Road in Leeds. AY & Y.Patel now has four forecourts with Preston-based James Hall & Co. Ltd which is Spar UK's primary wholesaler and distributor for the north of England. Shaheena Patel, Head of Operations at AY & Y.Patel Dewsbury Ltd, said: "Our association with James Hall & Co Ltd is fantastic. We have a hand in hand relationship and really feel we are valued by the team there who work together with us to support our business ambitions. We have exciting plans in place for two further sites with James Hall & Co Ltd in due course."



AY and Y Patel on Leeds Road in Bradford, West Yorkshire

10. RELIANCE PRECISION

This high technology company based in Lepton makes specialist engineering parts for machinery working in the toughest climates.

This includes space, under-sea craft, aerospace and unmanned vehicles along with vital components and production assembly systems for businesses. In recent years, Reliance has grown into new sectors such as satellites, bionic prosthetics and DNA analysis instruments.

The precise nature of its work means it manufactures and measures in microns which is 1,000 times smaller than a millimetre. The business was founded in 1920 in Huddersfield as Reliance Gear Company Ltd and in the 1930s manufactured its own Reliance washing machine but as the range and complexity of its work advanced into precision instrumentation it was renamed Reliance Precision in 2005. The components it manufactures range from specialist screws to

complete sub-assemblies for rotary and linear motion. Reliance runs an apprentice scheme and has taken on six apprentices in 2023. The six are Felix Watson-Evans, George Brook, Joshua Ellis, Han

Barden-Nash, Sam Freudemann and Harry Baxter. All have recently left local high schools including Honley High, King James', Holmfirth High, Shelley College, Moor End Academy and Huddersfield Grammar School.



The six Reliance Precision apprentices 2023

Significant companies

Major companies who contribute a great deal to our business community and offer rewarding careers for local people

SYNGENTA

Syngenta has been a major employer in Huddersfield at its landmark site on Leeds Road for decades and is also greatly involved in community and charity work across Kirklees.

As one of the world's leading agriscience companies, it helps millions of farmers worldwide grow higher yields with a range of chemical-based products that help protect plants from weeds, pests and disease.

Syngenta community and business



The 2023 apprentices at Syngenta in Huddersfield

relations manager Carl Sykes said: "We continue to grow our

site activities, investing in our apprenticeship programme, providing employment opportunities for local people and remain committed to keeping professional and skilled manufacturing jobs in Kirklees for many years to come." The company - formerly ICI and then Zeneca - employs about 450 people in Huddersfield and has invested millions of pounds into the site in recent years. Around 80% of its employees, ranging from chemists to engineers, live in Kirklees.

CUMMINS TURBO TECHNOLOGIES

Cummins employs just over 1,000 people at its base on St Andrews Road, Huddersfield, where it manufactures medium to heavy-duty diesel engine turbos and has just celebrated its 70th anniversary.

The story began in March 1952 as Holset Engineering Co Ltd founded by business partners Brian Holmes and Paul Croset - hence the name Holset which combines their surnames - and

began manufacturing turbochargers in the town in 1958 before it was bought by Cummins in 1973. Around 40% of the world's lorries are powered by a Holset-branded turbocharger including major names such as Volvo, Scania, DAF, MAN and Ford. Cummins also designs and manufactures turbochargers for buses, trains and ships. The company is very community

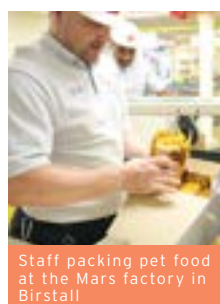
minded and provides volunteers for schemes such as a project to set up a Huddersfield Riverside Nature Park alongside the River Colne near to Huddersfield town centre.



MARS

Everyone knows about the famous Mars chocolate bars - but that's just a fraction of what this global company does even though it has close links to Kirklees.

It's also a major



Staff packing pet food at the Mars factory in Birstall

manufacturer of pet foods and treats with a factory on Oakwell Way in Birstall where it solely focuses on treats for cats and dogs such as dental sticks and chews with the well-known brands including Pedigree Rodeo and Schmackos. Mars is a huge employer for the Kirklees area with well over 1,000 people working in Birstall round the clock on the production lines. The big brand dog and cat food names

Mars produces include Whiskas, Pedigree, Iams, Sheba and Cesar. The confectionary brands also include Snickers, Twix, Galaxy and Maltesers along with Orbit chewing gum. Foods include Dolmio pasta sauces and Ben's Original rice. Mars was founded in 1911 when Frank Mars made the first sweets in the kitchen at his home in Washington, USA. It now employs 130,000 people at 454 sites in 80 countries.

INCORA (FORMERLY WESCO)

Aircraft consist of tens of thousands of parts but if something needs replacing where do you get it from?

Well, Incora - formed when two major aircraft parts companies Wesco Aircraft and Pattonair joined together in 2020 - have consolidated their Clayton West and Cleckheaton sites into a new one at Mirfield where they employ around 180 people. It's

a global company which stocks well over half-a-million components from more than 6,000 different suppliers including engines, airframes, landing gear, electronics, bearings, sensors, chemicals and tools. The company has thousands of customers and its huge number of suppliers means they only need to go to one place for their parts rather than trying to source them from

individual businesses. Wesco was founded in the USA in 1953 and expanded into Europe in 1988. Pattonair was founded in Weybridge, UK, in 1970. Major customers include aircraft and engine manufacturers such as Boeing, Airbus, Rolls Royce, Pratt and Whitney, General Electric and GKN Aerospace.

Significant companies

LV=

It is one of the biggest insurance and financial names around and has had a call centre spread over two floors at the Folly Hall Mills complex at the bottom of Chapel Hill in Huddersfield since 2010 and now employs around 380 people.

Formerly known as Liverpool Victoria with a history stretching back to 1843, the insurance side includes home, car, travel, pet and life and in Huddersfield they specialise in motor insurance and Britannia Rescue vehicle break down cover.

As a mutual company it's owned by its policy holders, now has 1.25 million members and made an operating profit of £31m in 2022. It works with a range of financial advisers and through them sells LV= products including life insurance, income protection, investments and retirement income solutions such as equity release and fixed term annuities. LV= employs around 4,000 people nationwide and has more than 6.5 million customers. It made a one-off payment of £750 to all its staff in October 2022 to help with the cost of living crisis.

KOBER LTD

In 2007 Forza Foods began supplying Asda with cooked meats from its first factory in Cleckheaton.

In 2011, having outgrown this site, it opened a bigger cooked meats factory 12 miles away in Normanton and this became Forza's new home with the site in Cleckheaton turned into a bacon and gammon factory and became Kober.

Now Forza and Kober have grown into a best-in-class manufacturing operation, supplying Asda with products from ham slices to salami and from pizza toppings to party food. Asda-owned International Procurement and Logistics (IPL) bought Forza and Kober in 2016. IPL chief executive Nick Scrase said at the time: "Our one defining strategy that drives our business model is to simplify supply chains by cutting out the middle-man and then passing these cost savings onto Asda customers."

Forza and Kober employ almost 400 people in Cleckheaton and around 1,700 in West Yorkshire but is looking to expand its workforce due to ever-increasing demand for its products. They have just launched a new joint website at www.forzakober.com

JOHN COTTON

John Cotton is one of the UK's leading manufacturers of pillows, duvets and mattress protectors using the very latest fibre technology.

This Mirfield-based family company was set up in 1916 and now has a



Chairman John Cotton

1,000-strong workforce across its group of companies producing 20 million pillows and 10 million duvets

every year.

The group also includes the Slumberdown and Snuggledown brands along with John Cotton Europe which recently opened a factory in Poland, providing 100 new jobs. In 2017, John Cotton bought Australia's leading pillow and duvet producing business, Tontine, which has an annual turnover of £25m, employs 90 people and is located near Melbourne.

The company is led by chairman John Cotton who took over from his father in 1965.

The business' sustainability credentials are impressive, diverting an estimated 1.7 billion plastic bottles from landfill to recycle them in their products. Its EarthKind brand is the first bedding product to be certified as Zero Waste to Landfill.

FOX'S BISCUITS

The company's roots can be traced back to 1853 when Michael Spedding baked his first batch of brandy snaps and sold them to shops, traders and shows from his Batley bakery. When his son-in-law, Fred Ellis Fox, took over in 1897 he renamed it F E Fox & Co.

The Batley factory now bakes 6 billion biscuits a year that are munched worldwide. Some of the UK's most loved Fox's biscuits include crunch creams, crinkle crunch, Viennese and party rings for kids. There are eight bakeries spread across the UK employing 5,000 people. For special occasions such as Christmas, Fox's do an indulgent



Staff on the production line at Fox's Biscuits factory in Birstall

chocolate selection tin simply called Fabulously. The Fox's website features lots of recipes you can bake using their biscuits.

Fox's is now owned by Ferrero International SA, a multinational company with headquarters in Luxembourg.

ADARE SEC

Adare SEC helps businesses to communicate with its customers as effectively as possible using everything from print to emails and text messages.

This can be quite a complex task when large companies have to deal with different customers in different ways with some wanting communications by letter while others are happy to receive emails and texts. Adare SEC are also experts at helping businesses to communicate with people who are vulnerable or have special needs such as sight loss. Adare SEC was established in 2006 at Clayton West with its roots traced back to the former Waddington Business Forms that was based on the



Adare SEC chief operations officer Tom Prestwich

same site. It now employs around 400 people and also has sites in Redditch in Worcestershire and Nottingham. Between them they produce hundreds of millions of important

customer communications every year ranging from PINS for credit cards and bank statements to welcome packs for new customers joining businesses ranging from banks to insurance companies.

Navigating International Recruitment

The Kirklees Top 100 Companies Talent Group meets regularly to discuss HR issues of common interest to local employers. This year it held a session to discuss international recruitment that covered tips and benefits of hiring international candidates, various visa options and how to apply for visa sponsorship.

Building a diverse workforce can contribute to the growth and success of an organisation, bringing fresh cultural perspectives, access to a wider talent pool and insights into new markets.

International recruitment, however, involves specific considerations, especially when it comes to navigating the complexities of work visas and visa sponsorship.

Benefits of international recruitment

Those from minority backgrounds make up a large portion Enterprise Rent-a-Car's workforce. Having people from different cultures and backgrounds has allowed it to grow, learn and develop as a business. Louise Sivewright, Talent Acquisition Marketing Specialist, explains, "We are so passionate about hiring a diverse candidate pool because we have a diverse customer base. "If somebody from a minority walked into our branch and saw that there were five white men standing behind the desk, are they going to feel like they are represented? Is that customer going to feel valued?" Adam Evans, managing director of marketing and IT solutions provider SNAVEUK, based in Huddersfield, said, "We do lots of work with the Department for Business & Trade and find that the quality of work from international candidates is exceptional. The level of commitment is higher with international graduate

employees as they are looking to settle here and want to have a future in the UK; therefore, their effort, loyalty and work ethic is fantastic." "Many international students and graduates have several years' work experience from their own countries, along with a wealth of skills and fresh perspectives to offer your business. They just want an opportunity to prove themselves in UK employment and can become an excellent addition to your team," Emma Clarkson, Business Partnership Manager from the Careers & Employability Service at the University of Huddersfield said. Thal Vasishta, Business Immigration Law Solicitor at Paragon Law added, "With acute shortages of skilled labour in many sectors, we are seeing more businesses incorporate sponsorship of international students into their recruitment strategies. "One approach is offering part-time roles to students whilst they study or full-time work when they switch to the graduate visa. This opens a pool of candidates for employers, allowing them to test, train and develop the international graduate before committing to sponsorship."

Tips for international recruitment

- Universities in the UK provide the perfect platform to recruit graduates from other countries.
- Opportunities can include advertising job openings or participating in recruitment events, presentations or workshops to

showcase your organisation's work and career advancement opportunities.

- Seek advice and support from University careers departments on how to promote your organisation to prospective candidates.
- Familiarise yourself with the various UK visa options, including Sponsorship, International Student Visas, Graduate Route Visas and Skilled Worker Visas. If you're unsure which visa is right for your candidate, guidance can be found on the gov.uk website.
- The visa application process can be complex, so support candidates throughout. Help them adapt to life in the UK through cultural orientation programmes, language support and assistance in finding accommodation.

ROUTES TO INTERNATIONAL RECRUITMENT

Sponsorship: Businesses need to apply for a licence. There is no time limit and the employee can also bring dependents.

International Student Visa: A fixed term contract for students until they complete their studies. Students can work 20 hrs per week and full-time during holidays.

Graduate Route Visas: International graduates can stay and work in the UK for up to 2 years (3 years for PHD students) after completing their studies.

Skilled Worker Visa: A person can stay in the UK for up to 5 years and work with an approved employer. Applicants must have a confirmed job before they apply for the visa.

USEFUL CONTACTS

International visas - www.gov.uk
Work with the University of Huddersfield's students & graduates - www.hud.ac.uk/business/student-and-graduate-talent

If you would like to get involved in the Kirklees Top 100 Talent Group, e-mail KirkleesTop100@hud.ac.uk

Significant organisations

KIRKLEES COUNCIL

Kirklees has a population of about 425,000 people across Huddersfield and Dewsbury and all need the services provided by Kirklees Council to some extent or other.

Many people only think of the council emptying the bins and being responsible for maintaining our roads but that's only the start. For the council - which is run by elected local politicians and administered by around 8,000 staff - is also responsible for schools, planning decisions, social services including providing financial care packages for the disabled, environmental health, libraries, collecting council tax and business rates, major road improvement schemes, taxi licensing and licensing pubs and clubs, looking after children in care, arranging fostering and even dealing with nuisance neighbours.

The council's new leader is Cllr Cathy Scott and it has just appointed a new chief executive, Steve Mawson from Gloucestershire County Council, who will replace Jacqui Gedman in October.

UNIVERSITY OF HUDDERSFIELD

The university's history dates back to 1841 when it began as the Young Men's Mental Improvement Society with around 400 students.

It was a polytechnic for many years before becoming a university in 1992 and now has more than 20,000 students from more than 130 countries who contribute an estimated £300m to the Huddersfield economy.

Since Prof Bob Cryan - who comes from Deighton - was appointed Vice Chancellor in 2007 the university has been transformed into one of the best in the country, winning a clutch of awards and its eye-catching new buildings have changed Huddersfield's skyline, a constant reminder of how vital the university now is to the town's economy and prosperity. The university's staff rank in the top three in England for the proportion who hold doctorates, have higher degrees and hold teaching qualifications.

KIRKLEES COLLEGE

Kirklees College was formed in 2008 with a merger of Huddersfield Technical College and Dewsbury College to become one of the biggest in the country with a main centre in each town plus other specialist teaching hubs.

Its 300 vocational courses include construction, engineering, manufacturing, animal care, apprenticeships, business, hospitality and catering, hair and beauty, health and social care and it also offers music, performing arts and media courses. Kirklees College is one of the leading apprenticeship providers in the UK, training more than 1,000 apprentices with over 1,000 employers each year.



In 2023, the college was ranked in the top 10 further education colleges for apprenticeship achievement in England.

CALDERDALE AND HUDDERSFIELD NHS FOUNDATION TRUST

The Trust employs more than 6,000 staff at its two main hospitals, Huddersfield Royal Infirmary and Calderdale Royal Hospital, as well as in community sites, health centres and patients' homes.

In its last inspection by the Care Quality Commission in June 2018 it was rated Good and cares for around 248,000 people in the Huddersfield

area and 205,000 in Calderdale.

A new Accident and Emergency unit has just been built at Huddersfield Royal Infirmary which will open in autumn 2023, part of a wider £200m investment into health care by the Trust.

In 2022/23 the Trust cared for more than 113,000 people as inpatients or day cases. More than 457,000 people attended outpatients, almost 174,000 went to accident and emergency for treatment and more than 4,300 babies were delivered.

There were more than 337,000 adult services contacts by the Trust's community teams as well as 223,000 contacts by its therapy services.

MID YORKSHIRE TEACHING NHS TRUST

The Trust runs Dewsbury and District Hospital, Pontefract Hospital, Pinderfields Hospital in Wakefield and community health services, providing care for more than half a million people.

It employs 9,200 staff throughout the Trust. Dewsbury and District Hospital treats over 340,000 patients every year - around 90,000 in accident and emergency - and provides urgent and emergency care, diagnostics, elective care, midwifery services and care of the elderly services throughout north Kirklees. It admits around 17,000 patients annually. In 2022, the Trust's leadership was rated as good as was community health services for adults, community dental services and community health inpatient services.

KIRKLEES ACTIVE LEISURE

Kirklees Active Leisure (KAL) is a charitable trust which manages 13 leisure centres and swimming pools on behalf of Kirklees Council.

It also manages Bradley Park Golf Course in Bradley, Huddersfield. Since it was created in 2002 more than £60m has been reinvested by Kirklees Council and KAL into local leisure centres. It employs 635 people and is governed by a board of 10 trustees. KAL centres have around 3 million visits per year with more than 26,000 members and over 7,000 people doing swimming lessons. Apart from the gym equipment and swimming pools, organised classes range from gentle exercises for older folk through to high energy body pumping workouts and studio cycling.



University of Huddersfield

Final Rank	Company name	Accounts Date	Employees		Turnover Year Y		Increase in Turnover			Profit Before Tax		Shareholder Funds		Total
			No.	Rank	Y £000s	Rank	Y-1 £000s	% increase	Rank	£000s	Rank	£000s	Rank	
1	ISAAC TIMMINS LTD (MYERS GROUP)	9/30/2021	335	20	59,819	20	45,617	31.13%	60	6,959	7	24,103	18	125
2	UK GREETINGS LIMITED	2/28/2022	2,359	1	84,133	11	77,825	8.11%	122	11,651	3	46,637	5	142
3	CONTINENTAL WINE & FOOD LIMITED	3/31/2022	213	32	94,588	9	77,382	22.23%	79	4,389	19	30,208	11	150
4	DR. REDDY'S LABORATORIES (EU) LIMITED	3/31/2023	164	42	65,528	18	52,832	24.03%	73	5,081	15	67,141	4	152
5	PPG ARCHITECTURAL COATINGS UK LTD	12/31/2021	1,382	3	290,775	2	289,035	0.60%	150	47,001	1	274,387	1	157
6	FINTEL PLC	12/31/2022	493	12	66,500	17	63,900	4.07%	137	12,400	2	97,300	3	171
7	CROSSROADS GROUP LIMITED	12/31/2021	599	10	107,942	8	89,469	20.65%	82	5,371	14	6,537	68	182
8	MABEY HIRE LIMITED	9/30/2022	397	15	42,763	28	38,410	11.33%	112	3,388	28	38,162	7	190
9	AY & Y. PATEL (DEWSBURY) LIMITED	3/31/2022	190	39	34,503	37	22,296	54.75%	25	1,501	57	11,945	34	192
10	RELIANCE RG LIMITED	3/31/2022	247	25	30,789	42	25,708	19.77%	86	3,361	31	25,996	16	200
11	DAVID BROWN SANTASALO UK LIMITED	12/31/2021	372	18	57,913	21	54,331	6.59%	128	4,444	18	23,847	19	204
12	WOOLTEX U.K. LIMITED	12/31/2021	121	53	24,828	51	18,801	32.06%	55	4,662	17	12,589	32	208
13	TOG 24 LIMITED	6/30/2022	280	23	29,272	47	20,668	41.63%	40	1,986	47	8,483	52	209
14	JEMMTEC LIMITED	12/31/2021	227	31	24,687	53	18,138	36.10%	49	1,464	58	23,156	20	211
15	OREAN PERSONAL CARE LIMITED	12/31/2021	289	22	32,777	41	26,481	23.77%	74	3,551	27	9,015	49	213
16	AFLEX HOSE LIMITED	12/31/2021	323	21	29,513	46	25,312	16.60%	101	2,713	33	27,499	13	214
16	WESTEX (CARPETS) LIMITED	4/2/2022	81	82	24,125	55	17,355	39.01%	43	9,543	5	14,104	29	214
18	HIGH SEAT HOLDINGS LIMITED	12/31/2021	469	13	49,620	22	42,544	16.63%	100	3,967	22	7,000	62	219
19	HARTFORD HOLDINGS GROUP LIMITED	4/30/2022	243	27	39,196	30	31,073	26.14%	69	714	87	16,287	25	238
20	MAC'S TRANSPORT (NORTHERN) LIMITED	4/30/2022	59	111	49,394	23	37,895	30.34%	62	4,359	20	13,795	30	246
21	BROOKFIELD PROPERTY (HOLDINGS) LTD	3/31/2022	99	67	34,694	36	26,344	31.70%	57	2,218	42	9,581	46	248
22	COGRI GROUP LIMITED	12/31/2021	130	51	17,863	78	13,841	29.06%	66	3,888	24	13,787	31	250
23	TOTAL FOODSERVICE SOLUTIONS LIMITED	4/30/2022	96	70	21,624	63	9,151	136.29%	12	1,615	54	7,792	54	253
24	CUTWEL LIMITED	4/30/2022	89	76	23,555	57	19,790	19.03%	89	5,836	13	20,347	22	257
25	NATIONAL FLOORCOVERINGS LIMITED	12/31/2021	117	54	21,162	65	17,829	18.69%	91	3,599	26	15,977	26	262
26	CATERERS CHOICE LIMITED	6/30/2022	31	137	70,952	15	51,781	37.02%	47	2,630	34	9,287	48	281
27	RAMSDENS SOLICITORS LLP	4/30/2022	234	30	18,617	74	15,953	16.69%	98	6,711	9	6,114	72	283
28	CALDER GROUP (DEWSBURY) LIMITED	6/30/2022	156	43	14,815	95	8,563	73.01%	20	964	81	9,568	47	286
29	HIGH GROVE BEDS LIMITED	12/31/2021	240	29	23,334	59	22,408	4.13%	136	1,970	48	14,316	28	300
30	NEWSMITH STAINLESS HOLDINGS LIMITED	6/30/2022	82	80	15,521	92	11,591	33.91%	51	2,107	45	10,206	42	310
31	LOCALA COMMUNITY PARTNERSHIPS C.I.C.	3/31/2022	1,424	2	75,910	13	70,526	7.63%	124	453	101	6,287	71	311
32	THORNTON & ROSS LIMITED	12/31/2021	653	8	156,993	3	178,818	-12.21%	291	8,827	6	37,491	8	316
33	TD HOLDINGS LTD	3/31/2022	97	69	18,466	75	12,124	52.31%	30	974	79	6,710	65	318
34	ZF CV DISTRIBUTION UK LIMITED	12/31/2021	38	132	47,274	25	36,936	27.99%	67	1,546	56	9,840	44	324
35	STANDARD WOOL UK (HOLDINGS) LIMITED	3/31/2022	69	94	34,939	35	27,900	25.23%	70	1,199	68	7,178	61	328
36	NL COMMERCIALS HOLDINGS LIMITED	6/30/2022	62	105	22,868	60	22,390	2.14%	144	5,018	16	26,404	15	340
37	FMG SUPPORT (RRRM) LTD	4/30/2022	4	182	23,624	56	16,269	45.21%	35	3,388	29	8,838	51	353
38	STEVIRO (HOLDINGS) LIMITED	8/21/2022	208	34	20,004	70	16,592	20.56%	83	959	82	4,798	87	356
38	IAN FIRTH HARDWARE LIMITED	12/31/2021	100	66	16,529	85	10,890	51.79%	31	1,030	78	4,192	96	356
40	TRITON CONSTRUCTION HOLDINGS LIMITED	3/31/2022	61	108	62,853	19	27,843	125.74%	14	394	107	3,374	109	357
41	EASTWOOD GROUP (HUDDERSFIELD) LIMITED	3/31/2022	200	35	15,851	91	11,175	41.85%	39	264	119	5,544	77	361
42	PC SPECIALIST LIMITED	8/31/2022	245	26	138,099	5	146,388	-5.66%	275	3,361	30	14,807	27	363
43	IFG DRAKE LIMITED	6/30/2022	69	94	29,920	45	29,641	0.94%	148	2,395	40	10,959	40	367
44	OWENS-CORNING VEIL U.K. LTD.	12/31/2021	94	72	13,358	104	12,477	7.06%	125	1,409	60	27,114	14	375
44	CHEMFIx PRODUCTS LIMITED	12/31/2021	92	75	19,640	72	16,750	17.25%	97	1,276	65	6,668	66	375
46	CALDERDALE AND HUDDERSFIELD SOLUTIONS LTD	3/31/2022	358	19	87,675	10	76,556	14.52%	107	451	102	1,125	140	378
47	STAFFORD MILLS HOLDINGS LIMITED	12/31/2021	62	105	16,049	89	11,749	36.60%	48	2,338	41	4,182	97	380
48	PAXMAN COOLERS LIMITED	12/31/2022	57	117	8,774	128	6,239	40.62%	41	2,508	36	6,911	63	385
49	STORK BETA LIMITED	3/27/2022	498	11	125,982	6	93,079	35.35%	50	6,802	8	-5,513	311	386

Final Rank	Company name	Accounts Date	Employees		Turnover Year Y		Increase in Turnover			Profit Before Tax		Shareholder Funds		Total
			No.	Rank	Y £000s	Rank	Y-1 £000s	% Increase	Rank	£000s	Rank	£000s	Rank	Rank
50	LESJOFORS SPRINGS (UK) LIMITED	12/31/2021	31	137	18,275	76	11,937	53.10%	29	1,759	51	4,347	95	388
51	TANDEM 1987 LIMITED	12/31/2021	383	16	125,459	7	139,120	-9.82%	286	2,503	37	9,917	43	389
52	POLYSEAM LIMITED	12/31/2021	101	62	16,625	83	13,628	21.99%	80	1,084	74	4,457	93	392
53	MAJOR RECRUITMENT LIMITED	3/31/2022	196	37	48,055	24	28,733	67.25%	22	50	158	502	152	393
53	FOREGAL LIMITED	9/30/2022	48	126	20,989	66	20,989	0.00%	154	6,496	10	11,456	37	393
55	JOHN HORSFALL & SONS(GREETLAND),LIMITED	12/31/2021	58	116	10,672	118	9,386	13.70%	108	2,434	39	16,313	24	405
55	FERNO (UK) LIMITED	12/31/2022	55	120	14,598	96	12,548	16.34%	104	2,134	44	10,758	41	405
57	ATHENA (UK) LIMITED	8/31/2022	17	152	21,701	62	16,382	32.47%	54	1,893	50	4,604	90	408
58	XL JOINERY LIMITED	12/31/2021	81	82	33,622	39	32,901	2.19%	143	347	110	11,525	35	409
58	RACKHAM HOUSEFLOORS LIMITED	12/31/2022	70	93	17,029	81	14,316	18.95%	90	1,319	64	5,170	81	409
58	VIDECON HOLDINGS LIMITED	8/31/2021	63	103	24,694	52	20,079	22.98%	78	439	103	6,089	73	409
61	STATUS INTERNATIONAL (UK) LTD	7/31/2022	87	78	47,051	26	51,958	-9.44%	282	6,052	12	28,486	12	410
62	HAROLD HINCHLIFFE LIMITED	9/30/2021	95	71	11,155	115	9,457	17.95%	95	606	95	11,140	39	415
63	FUELS TRANSPORT & LOGISTICS LTD	12/31/2021	467	14	27,098	50	27,098	0.00%	154	1,348	62	1,377	137	417
64	ARROW COMMERCIAL HOLDINGS LIMITED	3/31/2022	71	91	12,463	109	10,706	16.41%	103	2,101	46	6,321	70	419
65	FUTURE FORWARDING COMPANY LIMITED	10/31/2022	41	131	35,436	34	31,175	13.67%	109	1,913	49	3,462	106	429
66	HOYER GAS & PETROLEUM LOGISTICS LIMITED	12/31/2021	1,293	4	138,262	4	118,504	16.67%	99	-2,198	309	25,991	17	433
67	PHOENOX TEXTILES LIMITED	3/31/2022	183	40	22,440	61	25,086	-10.55%	288	3,706	25	22,100	21	435
67	SPECIALIST GLASS PRODUCTS LIMITED	3/31/2022	98	68	9,624	124	7,226	33.19%	52	1,392	61	2,083	130	435
69	ARROW INDUSTRIAL GROUP LIMITED	9/30/2022	105	61	14,526	98	11,767	23.44%	76	681	89	3,038	116	440
70	W.T.JOHNSON & SONS(HUDDERSFIELD) LIMITED	4/30/2022	93	74	5,759	144	3,739	54.01%	27	235	121	5,365	79	445
71	DUAL SEAL GLASS LTD.	5/31/2022	140	48	16,630	82	16,241	2.39%	142	404	106	6,535	69	447
72	FIRED UP CORPORATION LIMITED	12/31/2021	94	72	13,870	99	11,557	20.02%	84	667	91	3,691	104	450
73	HARGREAVES GROUP (GB) LIMITED	9/30/2021	82	80	16,295	86	13,633	19.53%	87	587	96	3,714	103	452
74	MRC GLOBAL (UK) LIMITED	12/31/2021	71	91	38,114	32	60,698	-37.21%	307	4,111	21	38,916	6	457
75	IUKH NLT LIMITED	7/31/2022	64	102	27,812	49	27,812	0.00%	154	3,229	32	2,554	123	460
76	HYSTAT HOLDINGS LIMITED	2/28/2022	101	62	11,620	113	11,620	0.00%	154	1,426	59	5,804	74	462
77	INTERIOR GOODS DIRECT LIMITED	5/31/2022	56	119	37,933	33	41,617	-8.85%	279	6,320	11	16,610	23	465
78	EXTRACT TECHNOLOGY LIMITED	12/31/2021	79	87	10,925	117	9,382	16.45%	102	382	108	7,783	55	469
79	G - TUFT LIMITED	4/2/2022	136	49	33,334	40	20,957	59.06%	24	2	225	1,689	133	471
79	JAMES ROBINSON GROUP LTD	3/31/2022	31	137	16,077	87	13,049	23.20%	77	1,633	53	3,014	117	471
81	THOMAS OWEN CARE LIMITED	3/31/2022	148	45	5,653	145	5,362	5.42%	133	1,154	71	5,287	80	474
81	SPEED PETROLEUM (UK) LIMITED	5/31/2022	48	126	28,751	48	28,751	0.00%	154	1,574	55	4,566	91	474
83	FORTEQ (UK) LIMITED	12/31/2021	59	111	10,298	121	8,889	15.85%	105	1,126	72	6,608	67	476
84	BROOK CROMPTON UK LIMITED	12/31/2021	37	133	13,830	102	13,803	0.20%	152	1,260	66	11,431	38	491
84	HULTAFORS GROUP UK LIMITED	12/31/2021	31	137	17,338	79	14,282	21.40%	81	1,202	67	2,231	127	491
86	CRAIG'S MOTORCYCLES LIMITED	9/30/2021	23	147	13,211	105	11,161	18.37%	94	1,047	76	5,748	75	497
87	HANSENGROUP LIMITED	6/30/2022	28	144	19,279	73	1,195	1512.72%	2	291	116	173	165	500
88	DURA BEDS LTD	11/30/2021	171	41	12,542	108	11,526	8.82%	120	302	114	3,010	118	501
88	ALLSOP HOLDINGS LIMITED	3/31/2022	134	50	11,074	116	9,764	13.41%	110	298	115	3,325	110	501
88	RICHARD ALAN ENGINEERING COMPANY LIMITED	12/31/2021	129	52	13,865	100	11,698	18.53%	93	159	130	2,321	126	501
91	MARTECH (UK) LTD	4/30/2022	69	94	7,140	136	4,986	43.21%	37	192	125	3,192	115	507
92	THE HENNESSY PARTNERSHIP LIMITED	3/31/2022	89	76	4,554	150	4,395	3.62%	139	916	83	7,456	60	508
93	FLEXITALLIC UK LTD	12/31/2021	213	32	30,407	43	27,463	10.72%	114	-2,391	312	33,999	10	511
94	BRISANT SECURE LTD	12/31/2021	53	121	15,994	90	15,994	0.00%	154	1,158	69	5,054	82	516
95	BONTEXGEO UK HOLDING LIMITED	12/31/2021	75	89	11,665	112	11,665	0.00%	154	756	85	4,856	86	526
96	OAKLAND GLASS LIMITED	10/31/2022	113	58	9,613	125	8,902	7.99%	123	189	126	3,779	100	532
97	SPECTRUM YARNS LIMITED	3/31/2022	108	60	16,060	88	17,209	-6.68%	277	1,338	63	7,586	57	545
98	FURNITURE CHOICE LIMITED	3/31/2022	111	59	38,847	31	45,422	-14.47%	292	379	109	7,587	56	547
99	SHAW TIMBER (HOLDINGS) LIMITED	9/30/2022	59	111	9,634	123	9,634	0.00%	154	1,690	52	3,376	108	548
100	LAWTON YARNS LIMITED	9/30/2022	254	24	33,708	38	34,299	-0.017	270	83	145	5,375	78	555

100 and still going strong!

Recent years have provided a particularly testing time for businesses, who have had to meet the challenges of Brexit, a global pandemic and now high levels of inflation and a cost-of-living crisis. But for some this is nothing new! Whilst many businesses do not survive beyond 5 years (with only 4 in 10

making the milestone) some of those that do can trace their heritage back much further, in many cases well over 100 years! Any company that has managed to successfully trade over such a long period surely deserves recognition. It is with this in mind that we decided to look at some of the oldest companies in Kirklees, to

highlight and celebrate their amazing success. We don't have room to cover all the companies and organisations in the depth they deserve, but here we shine a light on just a handful of those companies, providing a glimpse of the industries that have helped shape our economy as we know it today.

THOMAS BROADBENT AND SONS

Established in 1864, Thomas Broadbent and Sons Ltd has been doing business for almost 160 years. It has remained a family business operating from the same Huddersfield Mill site where the founder Thomas Broadbent commenced business as a millwright in 1864. From a modest two-story workshop this small business has increased considerably in size, expanding over the last 160 years to become a 20,000m² production facility.

In the early days the Broadbent factory consisted mainly of general engineering projects, iron founding, maintenance and repair of textile machinery and steam engines at a time when many of the large mills were being built in the river valley of West Yorkshire. In 1870, Broadbent produced its first centrifugal extractor for the speedy removal of water from washed wool and cloth. The machine was so effective and reliable they were soon awash with

orders and this became the main focus of the business. Now firmly established as an international leader in the supply of 21st century

centrifuge technology, Broadbent has a global network of owned sales offices, manufacturing plants and representation.



Whatever your business, wherever you are on your journey, we're here to help.



Startup



Grow



Invest



Workspaces

Whether you are starting your own business, a local SME with growth aspirations or an international investor seeking to relocate, our team of experienced advisors will support you on every step of your journey.

Perfectly located between **Leeds, Manchester** and **Sheffield**, Kirklees provides access to a market of over 7 million people within a one-hour drive; a highly skilled workforce and competitive commercial property prices.

We're a great place to invest and do business.

Follow us...  

To learn more visit: www.businesskirklees.com
or email us at: business.enquiries@kirklees.gov.uk

JOHN BROOKE AND SONS LTD

Founded in 1541, John Brooke and Sons Ltd is believed to be the oldest surviving family business in the UK. Wool cloth manufacturers for over 200 years, the company now manages a Heritage Office Park offering a wide range of office space and property to rent on its former mill site in Armitage Bridge.

BOWER ROEBUCK

Based in New Mill, Huddersfield since 1899, Bower Roebuck is a leading textile manufacturer renowned for producing some of the most luxury English fabrics and designs. Supplying wool, natural blends and sustainable tailoring fabric to luxury customers and brands globally.

JOSHUA ELLIS

Joshua Ellis was established in 1767, since then it has been owned by

just three families. Renowned the world over for producing the finest handcrafted cashmere and woollen cloth and scarves, their products are highly sought after by luxury fashion houses and exported to over 23 countries.

Z HINCHCLIFFE AND SONS

Z Hinchliffe and Sons have been spinners of quality yarns for over 200 years. The business was founded by Zaccheus Hinchliffe in 1766 as a trading company and in 1850, moved their company head-quarters to Denby Dale, where it remains today.

CAMIRA

A modern and diverse textiles manufacturing company designing and manufacturing fabrics for the commercial, residential and transportation sectors, Camira's roots can be traced all the way back to 1783. Today its Meltham Mills site is

home to over 100 looms and produces over 220,000 metres of fabric each week.

THORNTON AND ROSS

Thornton & Ross was founded in 1922 as a Manufacturing Chemist, supplying pharmacists with white label products. Today, they are one of the leading producers of household pharmaceutical products and own some of the country's most loved brands such as Covonia®, Hedrin®, CetraBen® as well as the leading disinfectant Zoflora®

RAMSDENS SOLICITORS

With a history spanning back more than 150 years, Huddersfield-based Ramsdens Solicitors is a leading full-service law firm. Today they have expanded to employ more than 280 people and the firm is one of The Times Top 250 law firms and ranked in the Legal 500.

LANGRICKS

Chartered Accountants | Wealth Management

*Strategic Accountancy
Built Around You*



We understand that no two businesses are the same, which is why our services are built around you, going beyond just accounting to focus on using numbers to help you achieve your business & personal goals.

Strategy

- ✓ Financial modelling
- ✓ Strategic consultancy
- ✓ Acquisitions, mergers & sales
- ✓ Business restructuring
- ✓ Tax restructuring
- ✓ Company formation & secretarial services
- ✓ Grants & funding
- ✓ Accounting technology set-up

Accountancy

- ✓ Annual accounts
- ✓ Audits
- ✓ Personal tax returns
- ✓ VAT returns
- ✓ CIS returns
- ✓ Bookkeeping
- ✓ Payroll
- ✓ Tax dispute resolution
- ✓ Corporation tax returns

Protecting your future services

- ✓ Pensions
- ✓ Probate
- ✓ Inheritance tax planning
- ✓ Personal tax planning
- ✓ Trusts
- ✓ Philanthropy & charitable giving

Get in touch: 01484 690 730 www.langricks.com

Strategy | Accountancy | Protecting your future

100 and still going strong! (continued)

RICHARD CARTER

Carters have been manufacturing hand tools of the highest quality for more than 280 years.

Established in Highburton in 1740 by Jeremiah Carter, the business flourished, and in 1850 Jeremiah's great, great grandson, Richard Carter, relocated the company to Dene Works in Kirkburton, which was to become its home for the next 150 years. It was at these premises where it became clear the future lay in shovel manufacturing; and in 1870 the Carter Shovel was developed for the rapidly expanding coal mining industry, which was fuelling the Industrial Revolution. Over a 100 years later the decline

of the Nationalised Coal and Steel Industries forced the company to seek new markets. This was so successful that they quickly outgrew Dene Works and began the search for a new home. In 1999 it established new premises at Neiley Works in Honley, providing an opportunity to embrace state-of-the-art manufacturing techniques which, combined with its heritage, enabled the business to innovate product design and enhance quality. It has been three centuries since the founder, Jeremiah Carter, had the vision and courage to start his company and Adam Carter, current joint MD along with Will Green, is the 9th generation working in the family



business. The Carter family is proud of the fact that they still owns and runs Richard Carter Ltd. And are prouder still of the people who work for them, and how far they have come together.

SHAWS

Shaws (Huddersfield) Ltd is a family-owned company currently manufacturing chutneys, relishes, sauces, salsas and jellies for retail, food service and for further manufacture. Their retail products can be found in several of the major multiples in the region and nationally in the UK and worldwide including New Zealand and Australia.

The company was established in 1889 by George Shaw as General Merchants and Chemists. It sold many things from relishes, jams and pickles to marrowfat peas and baking powder. George worked with his two sons Walter and Vincent to grow the business & in 1913, they moved

across town to larger premises where they still manufacture today. Walter became General Manager and his sons Norman & Malcom joined the business. In 1967, the fourth generation, Martin Shaw, recruited Terence Peace as Chartered Company Secretary.

Two years later he became a director, and the family friendship continues today. Martin's son Matthew joined the business and is currently



Chairman, and Terence's son Jim also joined the business and is one of the directors.

In 2019, the 6th generation of Shaws joined the team, Annie, who is Operations Supervisor. Her job is to ensure the smooth running of the factory and maintaining the Shaws high quality reputation. After the difficult years of Covid, 2023 has seen the business grow significantly. The business has seen an increase in customer demand and the number of staff employed at Shaws has almost doubled since the start of the year, guaranteeing that the business will be around for the next generation to join.

RELIANCE PRECISION LTD

Reliance Precision Limited is a family-owned engineering company specialising in the design, manufacture, assembly and test of highly complex components and sub-assemblies that play a critical role in the performance of the final application.

The company was incorporated on the 23 of November 1920 as The Reliance



Gear Company and focused on the production of gears for mills and other industrial applications. In 1955, the business was purchased by Mr Max Selka. He, along with his wife Jennifer, devoted the next sixty years to building Reliance into a world-class organisation with a reputation for quality and problem-solving expertise. In 1959, the business moved to Almondbury, and began to steer towards precision gears, gearboxes and later, the assembly of quadrupole mass filters. Reliance's product catalogue was introduced in the 1960s and is widely regarded as being the first of its kind in the UK. This has since developed into a comprehensive product portfolio containing a range

of standard products that can be modified or combined as part of an integrated solution. Today, Reliance is an established supplier to a diverse range of global markets including analytical instruments, aerospace defence and space. To meet the exacting tolerances these industries demand, Reliance's engineers manufacture and measure in microns (1000 times smaller than a millimetre). The company celebrated its centenary in 2020 and continues to invest in people, plant and technology - whether this is through the purchase of machines and equipment, the development of new processes or through its longstanding apprenticeship scheme.

Longevity can be attributed to many factors such as innovation, resilience and adaptability but whatever the secret it is surely worthy of huge celebration. Congratulations to all of those reaching the milestone and beyond, and here is to the next 100 years!

KIRKLEES TOP 100 - THE LIST

1



Originally founded as Isaac Timmins Ltd in 1929, the Myers Group can trace its modern-day heritage back to 1959 when Readymix Huddersfield was incorporated. The Readymix operation has since expanded into a regional business with four strategically located manufacturing plants. Group companies also include Johnsons Wellfield, founded in 1854 and acquired by the Myers family in 1979. Johnsons Wellfield is Britain's leading supplier of natural hard Yorkstone and the only division of the Group trading on a national basis.

2



UKG are one of the largest direct to retail publishers of greeting cards and social expression products in the UK and one of the leading greeting card manufacturers. They are part of the American Greetings family, which is one of the largest greeting card publishers in the world.

3



With a base in Huddersfield, Continental Wine and Food Ltd was established in 1960 and is a leading wine and alcoholic drinks importer, producer, bottler, wine supplier and distributor, with worldwide product sourcing from Eire, Europe, South Americas and Australia. They offer an extensive product range of still & sparkling wines, fortified wine, ready to drinks and speciality mixer drinks, with a substantial bonded manufacturing and winery facility offering focus on quality, innovation & service.

4



Established in the UK in 2002, Dr Reddy's Laboratories is part of Dr Reddy's group, an integrated global pharmaceutical company committed to accelerating access to affordable medicines. The UK portfolio of prescription medicines spans across major therapeutic categories and a variety of forms are available.

5



Founded in 1883 as Pittsburgh Plate Glass by Captain John B. Ford and John Pitcairn in Pittsburgh, Pennsylvania. Today, PPG is a global supplier of paints, coatings, optical products, and specialty materials. With a base in Birstall, PPG in the UK manufactures the market leading Johnstone's and Leyland paint brands which offer an extensive range of coatings and finishes for the DIY consumer and professional decorator. They are a global leader in paints, coatings and materials, operating in more than 70 countries. They work side by side with customers in the following industries: Construction, Consumer products, Industrial and transportation markets and aftermarkets.

6



For nearly two decades, Fintel (formerly known as SimplyBiz) has been the UK's leading support services business, powering thousands of intermediary businesses through its leading brands - SimplyBiz, Compliance First, SimplyBiz Mortgages, SIFA Professional, FIBA, APS Legal & Associates, Gateway Surveyors, the Consumer Credit Centre, and Signature. Fintel are committed to simplifying and improving the complex world of financial services and to creating a better outcome for everyone.

8



Mabey Hire are an award-winning temporary works specialist and have been at the forefront of their industry for 60 years, building a reputation for engineering and service excellence. Mabey Hire has a 70-strong national engineering team - who have delivered temporary works schemes for some of the most complex and largest construction and infrastructure projects in the UK offering a complete in-house solution from design, supply, installation and monitoring for planned, reactive and emergency projects and the UK's widest range of temporary works equipment for hire.

9

AY & Y. PATEL (DEWSBURY) LIMITED

Established in 1975, AY & Y. Patel (Dewsbury) currently operates a portfolio of petrol forecourts, convenience stores and automotive centres throughout United Kingdom and have recently completed a £2,000,000 refurbishment across two of their West Yorkshire branches.

10



Founded in 1920, Reliance RG (trading as Reliance Precision) provides custom, high reliability, precision instrumentation to customers from global markets. Engineering capabilities include design, development, prototyping, manufacturing, assembly and test, with a catalogue of precision motion control components and electromechanical assemblies.

11



Founded in 1860 as a pattern manufacturing company by 1873 David Brown had begun to concentrate on gear systems and by 1898 was specialising in machine-cut gears. The company moved in 1902 to Park Works at Huddersfield, where they are based today. In 2016, David Brown and Santasalo joined forces to become one of the world's leading mechanical power transmission brands bringing together almost three centuries of combined gear engineering leadership and substantial geographic coverage. Located in 27 global locations with over 1,100 employees, a strong track record for reliable performance coupled with a rich brand heritage and proven application experience.

13



TOG24 was founded by Donald Ward in West Yorkshire in 1958. Based in the Spen Valley town of Heckmondwike, initially produced footwear, branched into sports bags and football kits in the 70's before finally landing on waterproofs and fleeces. As the brand grew in popularity skiwear and casual clothing were added and they began to produce overseas. TOG24 now sells from over 60 outlets across Britain and Ireland.

15



Founded in 1997, Orian is an award-winning private label cosmetic manufacturing company operating in the UK and USA. They specialise in producing high-end skin and hair care products and over the years have developed an award-winning reputation for quality, service and speed.

18



Starting in 1968 in the small West Yorkshire mill town of Dewsbury, High Seat Holdings Limited (trading as HSL Chairs) have been handcrafting beautiful chairs, sofas and beds right here in West Yorkshire for over 50 years.

14



Magma Ceramics & Catalysts is a manufacturer and supplier of a wide range of refractory, ceramic and catalyst materials and technology throughout the world. Since the company's inception in February 2010, following the management buyout of the former Dyson Group business, Dyson Precision Ceramics, they have enjoyed continual and significant growth from 24 employees in 2010 to over 200 at present. They have three divisions, notably 'Magma Ceramics', 'Magma Catalysts' and 'Magma Combustion' and operate worldwide from their facilities in the UK and Vietnam. Magma currently operate manufacturing plants in Wallasey, Wirral (UK), Bolton, Greater Manchester (UK), Dewsbury, West Yorkshire (UK Head Office) and Vietnam.

16



For more than 40 years Aflex Hose has been inventing, developing and manufacturing the widest, most technically advanced range of PTFE lined flexible hose products in the world. More than 10 million cars, ATVs, trucks and motorbikes on the roads today include one or more Aflex PTFE hoses.

19



Hartford Holdings is the parent company of several different brands predominantly focusing on the bathroom industry including Hartford Bathrooms, Trojan Plastics, Thomas Crapper and Company and Mantaleda Bathroom Company.

16



16 - WESTEX (CARPETS) LIMITED
Westex were founded back in 1977 as 'ST Carpets' in the sheep farming and textile heartland of West Yorkshire in the UK. A private company, Westex Carpets was originally the concept of a master dyer who wanted to offer a wider range of colour and quality within carpet manufacture. Today, they continue to draw on and develop that legacy with three dedicated manufacturing hubs.

20



A family run firm, spanning almost 3 generations, Mac's Transport (Northern) Limited (trading as Mac's Trucks) success is due to an amalgamation of best practice, innovation and professionalism. It is a one-stopshop for customers, dealing with buying, building and aftersales care in-house - their primary business activity is the production and manufacture of HGV vehicles.

KIRKLEES TOP 100 - THE LIST

KIRKLEES TOP 100 - THE LIST

21

BROOKFIELD PROPERTY (HOLDINGS) LTD

Brookfield Property (Holdings) is a retailer of fuel and other household goods with convenience stores including Subway outlets, bakeries and valeting. The group operates a portfolio of sites in the north of England. As part of its growth strategy, it seeks to offer quality products with excellent service at all its sites. To achieve this the group has partnered up with major brands such as BP, Shell, Nisa, and Coop for the convenience stores.

23



The Howarth family started out in the food industry in 1881. The business delivers wholesale catering supplies direct to numerous businesses including licensed trade and restaurants, coffee shops and sandwich bars, schools and universities and establishments in the care industry across the north.

25



Incorporated in 1955, National Floorcoverings produces a wide variety of products from fibre bonded carpets for the education market, tufted carpet and tiles for the commercial sector to specialised indoor and outdoor sports surfaces, the National Floorcoverings group has expertise in all aspects of flooring.

28

CALDER GROUP (DEWSBURY) LIMITED

Calder Group (Dewsbury) Limited is the parent company of different brands including Anchor Carpets, Calder Carpets, Calder Properties and Calder Textiles.

29



Established in 2002, Highgrove is one of the UK's fastest growing bed brands and currently produce approx. 5000 beds a week from their new manufacturing plant in Liversedge, West Yorkshire - one of the biggest and most modern in Europe. Highgrove are a privately owned, family business.

22



The CoGri Group is a consortium of floor solution specialists and has over 31 year's global experience in the design, construction, testing, surveying and upgrading of industrial concrete floors. The Group has over 200 employees worldwide across 23 companies with offices in 14 countries. They offer services throughout Europe, North and South America, Oceania, Africa, Asia and the Middle East.

24



Cutwel have been servicing the UK & Irish engineering industry for over 25 years. Established in 1996 as a small family run company, Cutwel has grown to become one of the largest independent engineering tooling suppliers in the United Kingdom, with a turnover of £20m, serving over 10,000 precision engineering companies nationwide.

27



Established in Huddersfield in 1870, with its principal office in Edgerton and twelve branch offices in Bradford, Dewsbury, Elland, Huddersfield, Halifax, Holmfirth, Leeds, Milnsbridge, Mirfield, Slaithwaite, Wakefield and York, Ramsdens is perfectly placed to build on its 150 year's heritage in the area. With 260 team members, working in 12 different practice areas, across 14 offices and solicitors and support staff fluent in 7 languages, Ramsdens offers the full spectrum of legal services to organisations and to the individual.

30



Formed in 1969, Newsmith Stainless Limited has remained a family-owned business, developing its identity as one of the world's leading manufacturers of an extensive and versatile range of industrial washing, drying, handling, conveying and auxiliary equipment.

31



Locala was created in 2011 to take on the NHS community healthcare services previously provided as part of Kirklees Primary Care Trust. There was an ambition and determination to be flexible and innovative. Locala Health & Wellbeing is a not-for-profit community healthcare provider offering a variety of NHS services to care for and support people of all ages. Locala employs around 1500 people who are all committed to delivering the very best services to patients.

33



Founded in 2006, Talk Direct (Leeds) Ltd is an O2 Franchise operating a Call Centre and 16 successful stores across Yorkshire, Nottinghamshire and the North East of England. Now turning over c£25m with c200 FTE's across various portfolios of businesses.

36



NL originally dates to 1985 when Nigel Lella first purchased the Rouse Mill Lane site in Batley, West Yorkshire. NL Commercials is a family-owned vehicle rental company, supplying vehicle hire solutions for over 35 years. NL is now the largest Independent rental company in the North of England, supplying over 2500 vehicles Nationally.

38



Ian Firth Hardware Ltd was established in 1982. In 1988 the company branched out into Patio Doors, Garage Doors and Internal Doors, offering a supply and fit service for some products. By 1995 the company started selling Composite Doors, steel and GRP faced, and invested in cutting machinery to be able to customise the doors to meet the designs the customers wanted. By 2007 turnover had hit over £12m with its own fleet of vehicles delivering across the country every week.

32



Based in Linthwaite, Huddersfield, Thornton & Ross has been caring for its customers since 1922. Thornton & Ross is one of the UK's fastest-growing, leading producers of household pharmaceutical products, and own some of the country's most loved brands such as Covonia®, Hedrin®, Cetraben® as well as the leading disinfectant Zoflora®. It is a trusted and reliable provider of prescription products, including emollients bone health products and generics, to the NHS with almost 100 years' heritage. Thornton & Ross is part of the STADA group. STADA Arzneimittel AG is a publicly listed company with headquarters in Bad Vilbel, Germany. Worldwide, STADA Arzneimittel AG sells its products in approximately 120 countries.

34



ZF CV Distribution UK provide clean, safe, intelligent: sustainable solutions for commercial vehicles in logistics and public transport. With decades of experience in transmission, braking and steering technology, ZF know how important road safety and driver comfort is in the industry.

35

**Standard Wool**

Standard Wool UK (Holdings) Limited is the parent company of Standard Wool (UK) which is a global group of companies committed to sourcing, processing and supplying superior quality wool and its by-products, with headquarters in Dewsbury.

37



FMG was established in 1986 in Huddersfield and remains one of the largest private employers in the town. Over the last 30 years FMG have experienced substantial growth in core Incident Management markets. Today, FMG is one of the UK's only Incident Management and Roadside Services Specialists committed to reducing the frequency and impact of incidents. They deliver business-critical, 24-hour vehicle and driver support to Blue Chip customers, Leasing Providers, Motor Insurers, Highways England and several Police Forces.

38



Founded in Yorkshire, Stevro (Holdings) Limited's (trading as Jay-Be) heritage can be traced back to the early days of the industrial revolution. Born out of a passion for comfort innovation and manufacturing, they have evolved throughout generations to become well-known for creating industry leading sleep products which are functional, innovative and environmentally conscious.

40



Founded in 2005, Triton Construction Limited is a general contractor providing construction services across the north of England for over 12 years. With the head office located in Liversedge, West Yorkshire and with a north west regional office in Warrington it is able to cover projects in Yorkshire, the north east, Derbyshire and the north west.

KIRKLEES TOP 100 - THE LIST

41 **EASTWOOD GROUP
(HUDDERSFIELD)
LIMITED**

Eastwood Group (Huddersfield) Limited operates a number of companies across the insurance and financial management industries, in addition to companies supplying cooker hoods, including Westin and Eastwood Financial.



Owens Corning Veil UK was founded in 1951, and manufactures a range of insulation, roofing and fiberglass composite materials. Leveraging the talents of 19,000 employees in 33 countries, Owens Corning provides innovative products, manufacturing technologies, and sustainable solutions.

47 **Pacific**

Stafford Mills Holdings Limited (trading as Pacific Lifestyle) is business-to-business retailer that sells interior decoration and indoor furnishing items to the trade and has been based in Milnsbridge for over 50 years.

49 **mamas
& papas®**

Established in 1981, Mamas & Papas have been helping parents grow their families for over 40 years. From award-winning baby products to expert help and advice, everything they do is designed to make life a little easier for real parents, living real lives.



PCSpecialist are Europe's leading system integrator, specialising in build to order PCs, Laptops, AIOs and Servers. They focus on building high-performance systems for enthusiasts, gamers & professionals. Established in 2003 in the United Kingdom, they speak 10 languages and supply computers to over 30 countries across Europe. They have registered branches in France, Italy and Spain, a subsidiary in Germany and are registered for VAT in 13 countries.



Chemfix was created in 1991 as the business venture of a Kent-based entrepreneur. Allied with a successful Yorkshire based manufacturer of chemical resins, Chemfix entered the new and growing Industry of Chemical Anchoring. Chemfix is a company that specialises in the development and manufacture of Chemical Anchoring, repair solutions and anchoring products for the industrial, construction, and DIY sectors. Chemfix manufactures for many global brands and household names.



The family story of Paxman Coolers began in the 1950s when Eric Paxman, the father of the company's current chairman Glenn, invented the beer cooling system for breweries. For the next 30 years, the family was hugely successful in developing award-winning cooling products and systems. The Paxman Scalp Cooling System, also known as the 'cold cap', was designed using the family's refrigeration expertise when Glenn Paxman's wife began losing her hair whilst receiving chemotherapy for breast cancer. Glenn, realizing how traumatic the subsequent hair loss was, developed a system that worked. After years of research and development, Glenn and his brother Neil built the first prototype of the Paxman Scalp Cooling System that was installed at the Huddersfield Royal Infirmary in 1997.

50 **LESJÖFORS**

Lesjöfors produce an extensive range of springs for the European Car and Light Commercial Vehicle market, offering high-quality products, professional service, and excellent availability. Lesjöfors have spent over 160 years manufacturing springs, and today produce the world's largest range of coil springs for the automotive aftermarket. They are a European market leader in the suspension coil spring free aftermarket.



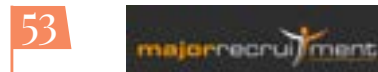
Incorporated in 1945, Drake Extrusion Ltd. manufactures coloured polypropylene fibres. The Company provides its products for such uses as floor coverings, industrial & filtration, home furnishings, concrete, and paper & soil reinforcement. Drake Extrusion operates in Bradford and Huddersfield. With a focus on researching new products and technologies, IFG's mission is not only to continually enhance the performance characteristics of its fibres, but to bring forward a new era of more environmental and sustainable performance fibre solutions.



In February 2018, Calderdale and Huddersfield NHS Foundation Trust decided to set up a wholly owned subsidiary to manage its estates, facilities, medical engineering and procurement functions. The subsidiary is called Calderdale and Huddersfield Solutions Ltd (CHS) and currently employs around 450 colleagues to help deliver a comprehensive service.

51 **principle**

Founded in 1987, Tandem 1987 also known as Principle Group is an international brand implementation company headquartered in Huddersfield, UK, with 23 offices in 70+ countries around the world. Clients span many sectors including Automotive, Corporate & Industrial, Financial Services, Health & Wellness, Hospitality & Leisure, Retail and Telecommunications & Media.



Founded in 1992 in Morley, Leeds, Major Recruitment Limited provide jobs for people and consultancy solutions across multiple sectors using teams of specialist recruiters who know your sector inside out. Their business is split up into divisions, each with their own practices, procedures and approach - these are designed for the industry they serve. They are independently owned and have grown organically, meaning each location is integrated into its local region. This allows them to provide expertise in each specific market and geographical location.

55 **FERNO**

Founded in 1971, Ferno (UK) Limited have created a global range of products unrivalled in quality and design and is a world leading innovator, manufacturer and supplier of medical equipment to Emergency Medical Services, Fire & Rescue Services, Hospitals, Funeral & Mortuary, Industrial, Aviation, Military sectors and other major industries. The company employs over 50 staff at its facility in Cleckheaton and supplies its products into the UK, Ireland and Export through the Ferno Distributor network.



XL Joinery Limited have provided quality doors and associated joinery, for over 20 years, to the most prestigious names in the DIY sector and to Builders Merchants, Timber Merchants and Independent Door Retailers across the UK. They are focused on innovation and our range of Hardwood, Oak & Pine Doors offers its customers the most comprehensive range of wooden doors available in the UK.

KIRKLEES TOP 100 - THE LIST

52 **Polyseam.**

Polyseam has been independently manufacturing first class brands for the majority of the world's leading suppliers since 1993. Specialising in the development of professional sealants, adhesives, fillers and firestopping products for almost any substrate or application, they use their trade expertise to provide innovative products for the industry. Their comprehensive manufacturing experience and capabilities, matched with dedicated research and development investment, has positioned their products alongside other global market leaders.



Established in 1981, Foregate are a roofing and reinforcements specialist that provide both the public and construction industry with a first-class service, where quality and express delivery are their aims.



Established in 1863, John Horsfall head office is based in the heart of the historical textile landscape of West Yorkshire with an in-house design studio, warehouse and sampling facility. They also have an office in Hangzhou in China, where their dedicated team work alongside our partner factories ensuring the fabric manufacturing process and quality control through all stages. The familyrun business which started out as fabric manufacturers, is now managed by Managing Director Peter Horsfall Benson. Peter is the fifth generation of the Horsfall family to run the company.



Founded in 2010, Athena (UK) Limited is a groundwork and civil engineering contractor providing a diverse range of construction services.



Founded in 1979 by Charles Rackham and acquired by Paul Moore in 1991, Rackham Housefloors Ltd has supplied 175mm pre-stressed concrete floor beams to the building industry for more than 30 years. Rackhams moved into its Head Office building in Mill Street East, Dewsbury, West Yorkshire in 1990 where it remains to this day. The company manufactures and delivers from three production plants in Cinderford, Gloucestershire, Grantham, Lincolnshire and Featherstone, West Yorkshire.



Trading successfully since 1995, Videcon is a leading tradeonly distributor of security products and services. Videcon's expertise encompasses all aspects of security distribution from products to training and after-care service.

KIRKLEES TOP 100 - THE LIST

61



Established in 1990, Status International (UK) Limited, ("Status"), is an independent supplier of lighting and electrical accessories. Status is run by father and son, Peter and Nicholas McVeigh, who between them have over 80 year's combined experience in the lighting industry. Today, Status boasts a customer base across the UK and Europe including major national retailers, wholesalers, independent retailers and electrical wholesalers. In 2016, Status celebrated its 25th anniversary. Status is located at its head office in Cleckheaton, West Yorkshire, with a warehouse, distribution centre, in house design studio and laboratory. In 2014, Status were part of an elite group of national companies that featured on the fastest growing profit stars list compiled by the Sunday Times BDO Profit Track 100.

62

Z. Hinchliffe & Sons

Spinners of Quality Yarn for Over 200 Years, Harold Hinchliffe Limited was founded in 1766 as a trading company and in 1850, they built their company headquarters in the rural, picturesque Yorkshire village of Denby Dale, and it remains in the very same place to this day.

71



Dual Seal Glass Limited started business in 1995 when father and son David and Nigel Meredith decided to create a Huddersfield based company strategically developed to supply a local market with insulating glass units incorporating a unique Low E soft coat product newly available to the industry at this time. This decision immediately placed Dual Seal Glass as a market leader in product choice which was linked with an ethos of quality and service that has carried through to the present day.

72



Fired Up was established in Huddersfield in 1998 as a small manufacturer of fires and fireplaces. Over the past 18 years they have grown organically and through acquisition to be a global employer, operating businesses in the UK, USA, Hong Kong and China. They operate three product brands; Adam, Aurora and Corby and across two industries; domestic heating and international hospitality and have factories in both China and the UK.

63



Founded in June 2021, Fuels Transport & Logistics is a freight transport business involving the domestic transportation of bulk liquids in the petroleum industry.

64



Arrow Self Drive, an independent family run business which began in Huddersfield in 1988, is the largest independently owned car, van, minibus and truck rental company in Yorkshire with over 2,000 vehicles on fleet. They offer self-drive hire from one day up to five years.

65



Future Forwarding is a privately held freight forwarder in business since 1977. Future Forwarding delivers global sea freight services for customers through a variety of carriers.

73

HARGREAVES GROUP (GB) LIMITED

Hargreaves Group (GB) Limited operates a number of companies in the industrial sector, supplying a range of aggregates, building materials, and associated products, as well as providing architectural and recycling services.

74

MRC Global

A worldwide organisation, based in America and with a site in Cleckheaton, MRC Global was established in 1921. MRC Transmark aim to be the world's leading provider of PVF products and solutions to the energy and industrial markets. MRC Global provides a broad range of valves that are available in a wide variety of materials from today's leading valve manufacturers to fully meet even the most complex and unique requirements.

75

INTERIORSUK

IUKH NLT Limited is the ultimate parent company of Interiors UK which is a nationwide commercial shopfitting company with a portfolio of high street clients in the retail, hospitality and leisure sectors.

66



Established in 1946 as an independent family run business, HOYER is a global leader in providing specialist bulk logistics for the chemical, petroleum, food and gas industries. Their UK operation commenced in 1974 and now employs 1,300 people throughout the country and globally they employ over 6,000 people in over 115 countries, turning over €1.2bn.

67



Established in 1954, by Jack Mosley. Jack was a local weaver who began by making fabric for bus seats and traditional hearth rugs that were woven from locally sourced wool and acrylic and cotton from Lancashire. Three generations later they are still manufacturing at their two sites in Scissett, Huddersfield.

67



Established in 2003 Specialist Glass Products Ltd design and supply flat, curved, annealed, toughened, laminated and double-glazed glass to companies of all sizes.

76



Hystat was established in Huddersfield in 1976 to service the market in heavy duty Hydraulic Cylinders, Accumulators, Rotary Actuators, Rotary Distributors and Pressure Vessels. In 1982 the company moved to its current site at Spa Fields Industrial Estate, Slaithwaite, Huddersfield. The premises have been extended three times and is now over ten times larger than the original building within excess of 50,000 sq ft of production facilities at its disposal to supply industries including: Steel & Aluminium Production, Marine, Offshore, Subsea, Shipboard, Industrial, Power Generation, Minerals & Mining, Nuclear, and Railway.

77



Interior Good Direct Limited have been trading exclusively online since 2003. Since their launch they have grown from a handful of people to one of the UK's largest online retailers of high quality home furnishings. They supply all kinds of window dressings, including: Wooden Blinds, Roller Blinds, Vertical Blinds, Curtain Poles, Ready-made and Made to Measure Curtains, Cushions, Roman Blinds, Plantation Shutters and Pleated Blinds and manufacture nearly everything in their facility in Grange Moor, Yorkshire.

69



Established in 1986, ARROW is the leading independent UK based manufacturer, supplier and installer of specialist doors and services for industrial, retail and commercial applications.

70



Established in 1910, W.T. Johnson & Sons is one of the world's leading textile dyeing and finishing companies. The business creates high-quality finished on an ever-increasing range of fabrics, from the finest gentlemen's worsted suiting to specialised safety clothing and upholstery.

78



Extract Technology was founded in 1981 and are a leading worldwide supplier of containment and aseptic systems for the pharmaceutical, healthcare, biotech and chemical markets. Even within the early years the business established a prestigious international client portfolio based on a reputation for excellence. Over the following years they have been at the forefront of many significant developments and have striven to maintain their position as one of the leading containment and aseptic manufacturers in the world.

79

G - TUFT LIMITED

G-Tuft Limited is a manufacturer of carpets and rugs based in Dewsbury.

79

James Robinson
Speciality Ingredients

James Robinson Group Ltd is the parent company of James Robinson Speciality Ingredients, a company that research, develop & manufacture ingredients for use in cosmetics and other highly specialised industries.

KIRKLEES TOP 100 - THE LIST

81

THOMAS OWEN HOUSE

specialist nursing & residential care

Thomas Owen House in Dewsbury, West Yorkshire, was bought by Kevin and Ann Martin in 1988 and was opened as a nursing home for older people with mental health needs in 1989. It is a specialist nursing care home providing high quality, continuing care for people who have long term mental health problems.

83



Formed in 1935, Forteq - then known as Mikron - traded as precision engineers before starting plastic injection moulding in the 1980s and selling the engineering side of the business. In 1990, the company moved from Albany Road to its present location and in 2005, rebranded to its current name. An integral part of the automotive, consumer electronics and pharmaceutical industry worldwide, Forteq provides design, development, manufacturing, assembly and packaging services for custom medical and drug delivery solutions, high precision transmission systems and precision plastic components.

86



Based in Dewsbury, Craig's Motorcycles is a family-run motorcycle dealership with over forty years' experience, established as the UK's largest off-road showroom, with over 150 bikes on display.

88



Established in 1998, Dura Beds are one of the largest bed manufacturing companies employing over 165 people located in the heart of the bed manufacturing industry in West Yorkshire. Since inception they have grown quickly and are now the second largest independent manufacturer of beds and mattresses in the UK making over 4,500 mattresses and 2500 divan beds per week. As well as serving the UK market they have recently started exporting to Spain, Portugal, and Denmark.

84



Ernest Brook made his first motor in Huddersfield, UK in 1904 forming Brook Motors, whilst Colonel Crompton had formed R.E.B. Crompton & Co in 1878. The two organisations came together in the 1970s to form the company that is now recognised the world over as Brook Crompton. Brook Crompton is a leading provider of energy efficient electric motors, known for delivering quality and innovation for over a century. Driven by technology and innovation, Brook Crompton has a comprehensive range of low, medium and high voltage motors for safe and hazardous duty designed to provide cost effective, energy-saving solutions across a range of industrial processes. Their drives packages can provide assured efficiency and reliability in a user-friendly variable speed drive system.

87



Founded in 1909 in Denmark, Hansen Group are Northern Europe's leading independent fenestration specialist and are the market leader in the design, supply, and installation of building products. They have design, project management, and manufacturing operations in 17 locations across Europe, and can supply products and services anywhere in the world. By working closely with architects, developers, and main contractors they develop unique, cost-effective, and sustainable solutions.

88



Allsops is a precision sheet metal design and engineering company, established over 60 years ago and based in Honley.

81

SPEED PETROLEUM (UK) LIMITED

Founded in May 2007, Speed Petroleum (UK) is a retailer of fuel and ancillary products that operates retail stations with convenience stores including Subway outlets and valeting.

84



The story of Hultafors started in 1883 when a young engineer, Karl-Hilmer Johansson Kollén, invented a measuring device that would facilitate Sweden's conversion to the metric system. Hultafors is a leading international brand within state-of-the-art hand tools designed for construction and industry. It all started more than 130 years ago with the innovation of the folding rule. Today they offer a wide selection of reliable hand tools for measuring & marking, chopping & striking, knives, and pry & wrecking bars.

91



Martech UK Ltd has been designing, manufacturing and supplying high quality luminaires to OEMs since 1996. From humble beginnings, their portfolio of clients has grown to include most of the biggest names in the lighting industry, with contract branding as their speciality.

94



Brisant Secure Ltd supplies top performance, premium quality security hardware to locksmiths and the glazing market. Brisant's range is innovative and takes security to a different level, staying a few steps ahead of the burglars.

96



Oakland Glass Ltd were established in 1986, in Dewsbury, in the very heart of West Yorkshire. Oakland Glass Ltd are the premier manufacturer of Double & Triple glazed insulated glass units, Oaksoft™ Energy Saver, Oaktough™ toughened safety glass, Oaksafe™ laminated, Oakspecials™ Decorative & Bespoke glass and the home of Super Spacer® Warm Edge technology.

99



For over a century the Shaw name has been associated with the manufacture of timber products in the Colne Valley, on the outskirts of Huddersfield. Shaw Timber, a wholly owned family business, is part of a group of companies founded in the early 1970's by brothers Michael and Stephen Shaw.

92



The Hennessy Partnership operates residential care homes to support individuals over the age of 18 with a varied range of needs. It specialises in complex behaviours and have an in-house therapy team who work closely alongside.

93



The Flexitallic brand can trace its history to mid-1800s England. The company manufactured gaskets from the very beginning. In the early 1900s, Flexitallic moved to the United States, placing its headquarters in Camden, New Jersey. Flexitallic is the market leader in the manufacture and supply of static sealing solutions.

95



Formed in 1988 and based in Meltham, in the heart of the West Yorkshire Pennines, ABG has developed a reputation for developing quality geosynthetics, geotextiles, geocell and geogrid solutions and delivering outstanding customer service. ABG technical support is backed up by their team of in-house Chartered Civil Engineers. Their service covers full design provision, design validation, feasibility studies, and advice on meeting regulatory requirements.

98



Brothers Tom and Howard started Furniture Choice in 2005 on a simple idea that stylish, quality furniture should be available for all. Changing their name to Furniture and Choice in 2020, their new name reflected their purpose to make it easy for customers to transform their homes.

100



Established in 1902 by Fred Lawton, this privately owned family business has seen many changes throughout the century. Originally based in Huddersfield, the company was founded at Lockwood Mills and for many years thereafter at Firth Street Mills. Today the factory is located at Ravens Ing Mills in Dewsbury. This site accommodates a wide range of yarn producing activities to provide the carpet industry with quality yarn products. It houses state of the art showrooms and colour matching facilities.

Information about companies listed has been sourced in good faith from public sources including company websites and the Kirklees Top 100. Companies partners assume no responsibility for any errors or omissions in the contents of this brochure.

Professional development that delivers results
for your business in real-time

Professional Manager and Senior Leader Higher Apprenticeships

100%
funded for levy
payers

“I feel I'm more able to influence policies and procedures because I understand all those pieces of the puzzle that make up the business.”

“I decided to join the Apprenticeship programme as I thought it was a good opportunity for progression within the company.”

Our accelerated apprenticeship programmes are flexible and learning is aligned to your business needs.

Benefits for your organisation:

- Succession planning and innovation
- Talent development
- Identifying and implementing progress and change



Contact our Apprenticeship team to find out more hbsenterprise@hud.ac.uk

95%

funded for non
levy payers

HUDDERSFIELD
BUSINESS SCHOOL

enriching lives
enhancing organisations
engaging communities

Huddersfield Business School

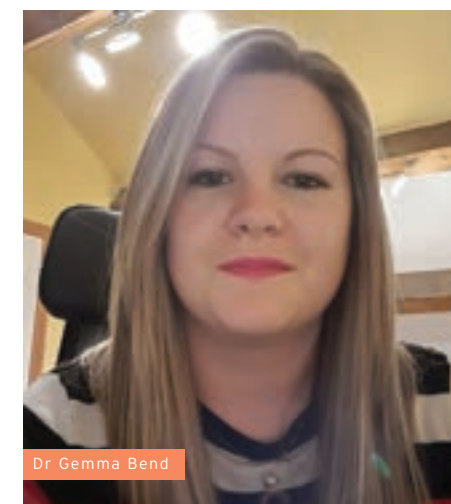
SUPPORTING BUSINESSES AND ORGANISATIONS
THROUGH OUR RESEARCH

Huddersfield Business School is committed to producing impactful research with many academics working in areas that are directly relevant to businesses and organisations. Whether as a leader you're wondering,

for example, what the latest research is on finding time to think about strategy or on using your diverse workforce skills to maximum benefit, we can help you. Four researchers outline their own areas of expertise relating to

professional development, dynamic capabilities in the workplace, diversity and inclusion, and the benefits to business of knowledge transfer. Read on or follow the links for more information.

INCLUSIVITY IN THE WORKPLACE



Dr Gemma Bend

In our ever-increasing global world, organisations are becoming more and more diverse. Diversity is complex but refers to: age, disability, gender reassignment, marriage and civil partnership, pregnancy and maternity, race, religion or belief, sex, and sexual orientation. Inclusion in the workplace requires implementation and ongoing review of organisational policies and practices that respect, value and celebrate this diversity.

Research shows that diverse organisations can create new knowledge and perspectives that lead to innovative practices, higher job satisfaction in staff, and improved reputation: These boost the overall

performance of organisations. However, it can also be challenging as it requires that organisations are pro-active in learning and implementing diversity policy and practices. This is necessary to ensure they meet legal requirements and to help manage the day-to-day interpersonal conflicts and exclusions which can arise without sufficient diversity awareness.

Dr Gemma Bend research specialism is exploring how organisational practices can include or exclude employees on the basis of their different characteristics and needs, particularly around disability and gender. You can read more about her and her work here: <https://pure.hud.ac.uk/en/persons/gemma-bend>

TRANSFER OF TRAINING

From an organisational perspective, transfer of training refers to the ability of individuals to take what they have learned in a training or development program and use it in their job role. Training is costly to organisations in terms of both money and time and so they must carefully consider the investment and be sure of returns: if training does not transfer, the organisation and the individual will not see the desired improvements in performance or productivity. Transfer of training is influenced

by three factors: the individual learner; the design of the training; and the work environment. It is also dependent on three separate time periods: pre-training; during training; and post training. So there's a lot to consider to ensure that training and development adds value - it's much more than simply placing someone on a training course.

Dr Pete Greenan has worked in learning and development for over 20 years, and you can read more about him and his work here: <https://pure.hud.ac.uk/en/persons/peter-greenan>



Dr Pete Greenan



Not sure which path to take? Talk to us today!

We are an award-winning independent Yorkshire Recruitment Agency that has been matching perfect candidates in their ideal jobs, for over 20 years.

We do this by getting to know each and every candidate on a personal level, but more importantly, we excel in understanding your business needs and building lasting relationships.

Specialising in:

Industrial

Engineering

Office

Education



Contact us today on:
01484 35 10 10 (24hours)

International House, Chapel Hill,
Huddersfield, HD1 3EE

www.stafflex.co.uk

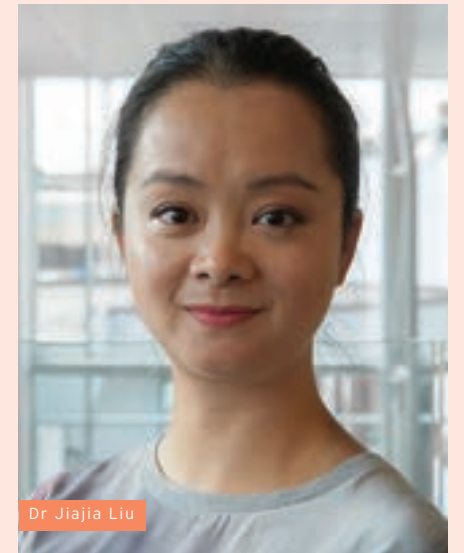
Huddersfield Business School

SUPPORTING BUSINESSES AND ORGANISATIONS
THROUGH OUR RESEARCH

KNOWLEDGE TRANSFER FOR SME GROWTH AND STABILITY

Knowledge transfer for small and medium-sized enterprises (SMEs) is crucial, as it accelerates growth by sharing expertise, insights and best practices. This process also enhances innovation, minimises errors, and empowers employees for efficiency and adaptability. It ensures continuity, allowing businesses to evolve and compete effectively in dynamic markets. For SMEs to truly benefit from knowledge transfer, research shows that business leaders need to cultivate: a clear knowledge strategy and supporting routine, active

engagement from the knowledge provider and recipient, and effective communication channels. It also thrives in an environment that values learning, rewards knowledge sharing, and motivates employees to participate in knowledge exchange activities regularly. Dr Jiajia Liu has many years' experience in developing knowledge transfer theories, writing business cases and providing consultancy on knowledge transfer practices, and you can read more about her and her work here: <https://pure.hud.ac.uk/en/persons/jiajia-liu>



Dr Jiajia Liu

DYNAMIC CAPABILITIES



Dr Shelley Harrington

Dynamic capabilities are abilities that enhance an organisation's capacity to develop, maintain, and renew both internal and external competencies, enabling it to better address rapidly changing environments. Whilst these capabilities span all business settings, they have been shown to act in different ways and an understanding of such differences is important.

Research has illuminated the challenge of something called operational immersion, where small business owners become overly involved in the day-to-day operational aspects of

the organisation, thereby limiting the development of the firm's strategic capabilities. This, in turn, leads to a capability vulnerability over time. To prevent operational immersion, it's essential to carve out time to step back from daily operations and gain a strategic perspective. Through various research projects we are keen to gain insights into how dynamic capabilities are developed and enacted within local SMEs. If you'd like to connect on LinkedIn and get involved with future projects, please visit Dr Shelley Harrington's page: <https://pure.hud.ac.uk/en/persons/shelley-harrington>

These are just a snapshot of the research in Huddersfield Business School which can inform performance and productivity in businesses and organisations. If you are interested in these projects, or would like to work with academics

in Huddersfield Business School on any of the challenges that you're facing, please do contact us on hbsenterprise@hud.ac.uk. You can see more of our research by following our blog: <https://blogs.hud.ac.uk/hbsblog/>



APPRENTICESHIPS at Kirklees College

Why choose Kirklees College?

- One of the UK's leading apprenticeship providers
- Train over 1,000 apprentices in 30 occupational areas
- Apprentices employed at over 1,000 companies in West Yorkshire

Kirklees College offers a wide range of apprenticeships in:

- Art and Design
- Business
- Computing and ICT
- Construction
- Engineering
- Hair and Beauty
- Hospitality and Catering
- Motor Vehicle
- Process Manufacturing
- Science

Contact our Employer Engagement team to find out more about recruiting an apprentice.

Email: employers@kirkleescollege.ac.uk Tel: **0800 781 3020**
kirkleescollege.ac.uk/employers/



LUXURY CORPORATE VENUE HIRE IN HUDDERSFIELD



AVAILABLE MID-WEEK &
WEEKENDS
FOR UP TO 60 PEOPLE, FROM
£250



VARIETY OF FOOD MENUS
BAR
ENTERTAINMENT
INDOOR & OUTDOOR SPACE



CLIENT HOSTING
PRODUCT LAUNCHES
STAFF PARTIES

EMPIRE HOUSE

SLAITHWAITE, HUDDERSFIELD

WWW.EMPIREOFFICE.CO.UK * HELLO@EMPIREOFFICE.CO.UK

Five local charities making a huge impact in Kirklees

THESE CHARITIES GO ABOVE AND BEYOND FOR THE COMMUNITY

THIRD SECTOR LEADERS

TSL Kirklees started out as a group of like-minded leaders of third sector organisations such as charities and community groups who wanted to work together and support each other.

It developed into a membership organisation that aimed to bring together and represent the whole

of the third sector in Kirklees and became a charity in 2015. TSL works with voluntary and community groups, charities, social enterprises, clubs, associations and other not-for-profit organisations in Kirklees which can access free TSL projects and services or can also choose to pay a minimal fee and become members.

TSL, managed by a board of trustees, has a small staff team based in Huddersfield but works throughout Kirklees with a specialist team of project development workers.

It's the main hub in Kirklees

for organisations needing volunteers and people wanting to volunteer with all the roles advertised on the TSL website and there are now more than 200 roles available for anything from fundraising or organising walking groups to helping to support families with very young children who need practical help.

TSL also has information about all the latest grants and funding available for charities and community groups to apply for and organises free training sessions on themes ranging from safeguarding, diversity and equality to how to develop a fundraising strategy.

The website is www.tslikirklees.org.uk



AGE UK CALDERDALE AND KIRKLEES

This charity was set up after Help The Aged and Age Concern merged and now runs a huge range of services for elderly people across Kirklees and Calderdale.

This includes day care centres, advice and information on benefits, money issues and staying warm; a handyperson service for little jobs that need doing such as fitting door locks, help with shopping, cleaning and other household chores; hiring out mobility aids and equipment to make life easier at home such as handrails and stairlifts; information and support for people and their

carers living with dementia and help settling in back home after being discharged from hospital. It even runs a weekly Tai Chi gentle exercise class in Huddersfield.

Age UK Calderdale and Kirklees, rated



Good by the Care Quality Commission in 2022, aims to support elderly people in any way it can and in Kirklees the council even subsidises its handyperson service.

With winter looming the charity is offering free home energy checks which includes advice about keeping warm and the possibility of having free energy saving equipment installed.

The charity always needs more volunteers and financial donations. For more information go to its website at www.ageuk.org.uk/calderdaleandkirklees

PROJECT YOUTH CANCER

One of Huddersfield's best-known charities changed its name early in 2023 as it positions itself as a leading support organisation for young people with cancer in the UK.

The Laura Crane Youth Cancer Trust has become Project Youth Cancer and has also launched a new counselling service across the region to help improve mental wellbeing in young cancer patients.

Since it was established in 1996 the charity has helped increase awareness around how cancers are different for teenagers and young adults and the lack of relevant research in this age group. Over the years it's invested hundreds of thousands of pounds to fund specific research projects

to help forge better diagnosis and treatment.

The charity also supports 47 specialist hospitals throughout the UK that treat teenage cancer, providing support such as technology to improve time spent on hospital wards and donates 500 Christmas presents to young people spending Christmas in hospital every year.

The Laura Crane Youth Cancer Trust was set up 25 years ago after Laura, a 17-year-old student at Greenhead College, died from cancer. Her mum, the late Jackie Roeder, set out to make a difference to young people living with cancer in memory of her daughter so set up the charity in her name.



Cancer is the most common form of non-accidental death in teenagers and young adults in the UK. Seven young people aged between 13 and 24 are diagnosed with cancer in the UK every day.

The Project Youth Cancer website is www.projectyouthcancer.org

ASPIRE CREATING COMMUNITIES

A community charity which helps hundreds of lonely or isolated people needs more volunteers and help from businesses for its vital work.

Aspire Creating Communities began in 2015 at St John's Church in Birkby with groups meeting to foster a sense of community and belonging while doing fun activities. It's expanded



Arts and crafts session at Aspire Creating Communities

ever since to set up more groups in Crosland Moor, Newsome, Dalton, Almondbury and Ashbrow.

Aspire is now run by a team of five staff helped by 30 volunteers with more than 200 people aged over 55 now attending its meetings in their own areas.

But more volunteers are always needed and a special plea has gone out to businesses to become involved too in supporting the groups, perhaps by sponsoring them for a few sessions or even a year.

Aspire founder and CEO, occupational therapist Susanna Shotter said: "97% of our members are either over 70 years old or have health conditions that limit their access to social

activities or exclude them altogether. For some, this is their only social interaction each week."

The weekly sessions are aimed at increasing mobility, mental stimulation and promoting a more active and creative lifestyle. Sessions range from singing and gentle exercise to arts and crafts and local history and photography, as well as occasional intergenerational sessions with local school children.

Just £250 funds one session for 20 members while £10,000 can fund one local group for 12 months.

For more information about Aspire Creating Communities go to its website www.aspirecreatingcommunities.org.uk

aspirecreatingcommunities.org.uk

ANDY'S MAN CLUB

This is a charity set up to help prevent men from taking their own lives and has several branches in the Kirklees area.

Andy's Man Club was formed after the tragic death of young dad Andy Roberts in Halifax and the first ones were set up in Halifax and Huddersfield, although there are now groups at almost 130 locations nationwide with around 3,000 men meeting to talk about their mental health problems every Monday at 7pm. They are run by a network of more than 900 volunteers and many of them first went to the clubs seeking support and help.

Andy, 23, from Halifax suddenly took his own life one Monday night in

April 2016. His family was left totally distraught as there were no signs at all that Andy was having suicidal thoughts.

They later discovered that a man takes his life in the UK every two hours - it's the biggest killer of men aged under 50 - and it's often said a factor is that men simply don't talk about the mental health struggles they are going through.

Andy's Man Club was set up by Andy's mum, Elaine, and his brother-in-law, former professional rugby league player Luke Ambler. The aim was to get men talking, hence the motto It's Okay To Talk. The charity won the The Queen's Award for Voluntary Service in 2021.



Andy Roberts (left) with his brother-in-law Luke Ambler

The clubs in the Kirklees area include Huddersfield, Holmfirth, Mirfield, Cleckheaton, Dewsbury and Batley. To find out more and your nearest group go to www.andysmanclub.co.uk

HUDDERSFIELD HUB: POSITIVE NEWS

HUDDERSFIELD HUB

Huddersfield Hub is a fresh and vibrant local news website and we're proud to be the new media partner for Kirklees Top 100 Companies.

Huddersfield Hub launched in February 2021 and we've gone from strength to strength since then, growing our readership and reach. We are a positive news website and we're all about quality local journalism. I'm the co-founder and editor and I've been a journalist in Kirklees all my working life - 37 years and counting!

I'm passionate about local news and the future of journalism and I wanted Huddersfield Hub to be different. Our passion and positivity makes us different. Huddersfield Hub was born in lockdown when doom and gloom was all over the mainstream media.

People are hungry for local news and information about where they live but they don't want an endless diet of bad



Martin Shaw, co-founder and editor of Huddersfield Hub

news or clickbait content. They want a considered, balanced approach to local news and they want positivity and hope for the future.

That's our vision and ethos at Huddersfield Hub and that's why we're

growing.

We provide a platform for the whole community and we cover local news, business, grassroots sport and What's On.

One of the challenges for the mainstream media in the internet era is how to pay for local journalism, the proper kind of local journalism that provides the checks and balances for a healthy local democracy.

Huddersfield Hub is funded by sponsorship from local businesses and organisations. Our business model isn't based on page views which merely promotes clickbait content that no-one values.

If you believe in the future of local news and think there's a better way I'd love to have a chat with you. Please e-mail martin@huddersfieldhub.co.uk

huddersfieldhub.co.uk



Stories about the companies and local charities have been written in this publication by Andy Hirst who runs his own Yorkshire freelance journalism agency AH! PR (www.ah-pr.com) specialising in press releases, blogging, website content, funding applications and copywriting.

ACHIEVE YOUR GOALS WITH
THE TERRIERS

A partnership with Huddersfield Town is about much more than just exposure. It's about creating a unique relationship between the club, your business and our community.

Find out how a relationship with us can help you meet your commercial objectives, as well as helping our audience get a much stronger sense of your values.

Visit hta.fc.com,
email commercial@hta.fc.com

or call Daniel McGeachie, Head of Partnerships, **01484 960 615**

KIRKLEES TOP 100

COMPANIES 2023/24

SUPPORTED BY



SPONSORED BY

LANGRICKS
Chartered Accountants | Wealth Management



OUR PARTNERS

3M BUCKLEY
INNOVATION
CENTRE

University of
HUDDERSFIELD
Inspiring global professionals

K Business
Kirklees



[KIRKLEES100.ORG](https://kirklees100.org)



[KIRKLEESTOP100@HUD.AC.UK](mailto:kirkleestop100@hud.ac.uk)